

## Everton Park, 29 Cain Street

Peaceful Living in a Leafy and Private Setting!

**\*\*PLEASE NOTE RENT WILL BE \$620 PER WEEK UNTIL THE 16/10/2025 INCREASING TO \$675 PER WEEK FROM THE 16/10/2025\*\***

Nestled at the end of a quiet cul-de-sac with no passing traffic, this charming home offers the perfect blend of tranquility, privacy, and comfort. Surrounded by leafy greenery and filled with natural light, the home enjoys serene views from every room.

Whether you're sipping your morning coffee on the balcony, enjoying the gentle cross-breezes, or unwinding in one of the spacious living areas, 29 Cain Street invites you to relax and embrace a peaceful lifestyle in an idyllic setting.

### Property Features:

- 3 spacious bedrooms all with built-in-robos; main bedroom includes air conditioning
- Well-maintained bathroom with separate toilet



**Disclaimer:** All information contained therein is gathered from relevant third parties sources. We cannot guarantee or give any warranty about the information provided. Interested parties must rely solely on their own enquiries.



**For Lease**  
Please Call

**View**  
[ljhooker.com.au/3A8CF1R](http://ljhooker.com.au/3A8CF1R)

**Contact**  
**Bella Garside**  
[office.aspley@ljhooker.com.au](mailto:office.aspley@ljhooker.com.au)

**LJ Hooker Aspley | Chermide**  
**(07) 3263 6022**

- Separate air-conditioned lounge and dining areas
- Upgraded kitchen with modern finishes
- Front and rear balconies perfect for relaxing or entertaining
- Double lock-up garage with automatic doors
- 5,000-litre rainwater tank

Walking distance to public transport, Everton Park State High School, and the suburb's vibrant dining and shopping precinct

29 Cain Street is situated in the sought-after suburb of Everton Park, approximately 10.8 km north of Brisbane's CBD. Known for its family-friendly atmosphere, Everton Park offers excellent access to schools, parks, shops, and cafes. With convenient public transport links and ongoing local development, it's a growing hub that blends suburban charm with modern convenience.

Would you like to view this property?

Go directly to [www.aspley.ljhooker.com.au](http://www.aspley.ljhooker.com.au) to register to inspect.

PLEASE NOTE, if you do not register online, we cannot notify you of any time changes or cancellations to inspections.

To apply please submit an online application via 2apply at the following website - <https://www.2apply.com.au> login

Alternatively, you can download and print our application a by visiting our website - <http://aspley.ljhooker.com.au> renting tenancy-application-form

All information contained herein is gathered from sources we consider to be reliable. However, we cannot guarantee or give any warranty about the information provided. Interested parties must solely rely on their own enquiries.

## More About this Property

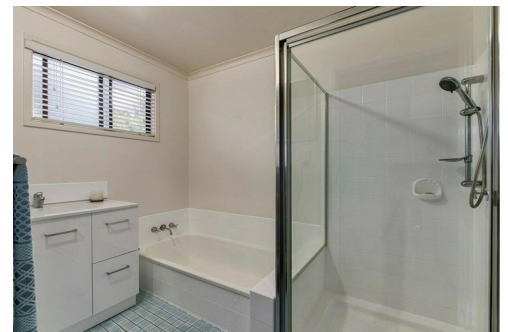
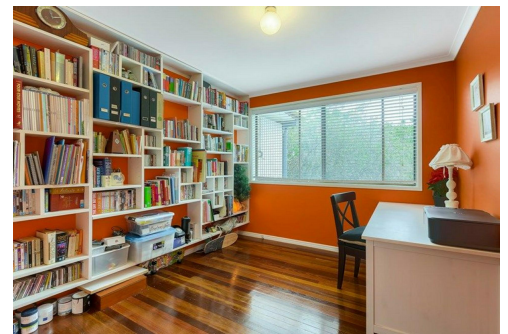
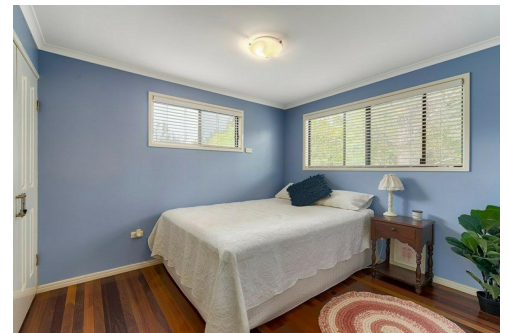
<b>Property ID</b>	3A8CF1R
<b>Property Type</b>	House
<b>Including</b>	Air Conditioning Deck Floorboards Secure Parking Fully Fenced Water Tank

### Bella Garside

Receptionist | [office.aspley@ljhooker.com.au](mailto:office.aspley@ljhooker.com.au)

### LJ Hooker Aspley | Chermide (07) 3263 6022

1359 Gympie Road, ASPLEY QLD 4034  
[aspley.ljhooker.com.au](http://aspley.ljhooker.com.au) | [aspley@ljhooker.com.au](mailto:aspley@ljhooker.com.au)



**LJ Hooker Aspley | Chermide**  
**(07) 3263 6022**

**Disclaimer:** All information contained therein is gathered from relevant third parties sources. We cannot guarantee or give any warranty about the information provided. Interested parties must rely solely on their own enquiries.