

Epping, 17/6-12 Maida Road

Bright & Spacious Ground Floor Apartment

Modern and spacious, this apartment features two large bedrooms with built-ins, including a master with ensuite, an open plan living and dining area, a gourmet gas kitchen, two stylish bathrooms, air conditioning, internal laundry, a tiled balcony and courtyard, plus secure undercover parking.

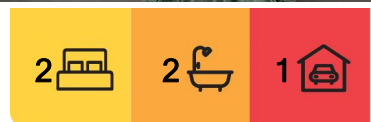
Located in a secure boutique complex this modern apartment offers spacious and light-filled interiors, boasting an exceptional easy-care lifestyle. Within close proximity to Epping Station, Schools and restaurants. Features include:

Property Features:

- Two generous sized bedrooms with built-ins robes
- Master bedroom with a spacious ensuite
- Open plan living and dining area
- Gourmet kitchen with gas cooking, dishwasher and ample storage



Disclaimer: All information contained therein is gathered from relevant third parties sources. We cannot guarantee or give any warranty about the information provided. Interested parties must rely solely on their own enquiries.



For Lease
Please Call

View
ljhooker.com.au/18CAF8B

Contact
Alexandra McPartland
0449 022 720
alex@ljha.com.au

LJ Hooker Ashfield
(02) 9797 6044

- Two stylish bathrooms main with separate shower and bath
- Air conditioning throughout
- An internal laundry
- Spacious balcony and courtyard with tiled flooring
- Undercover secure parking

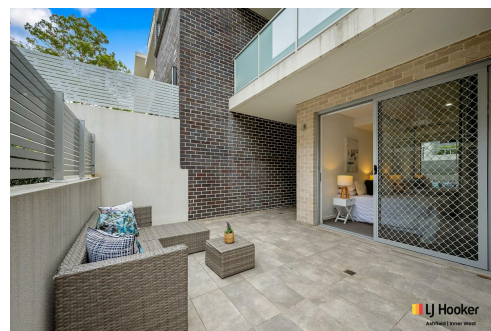
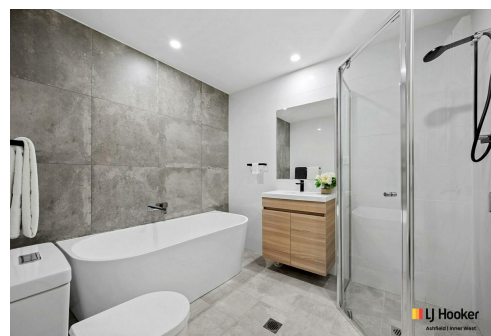
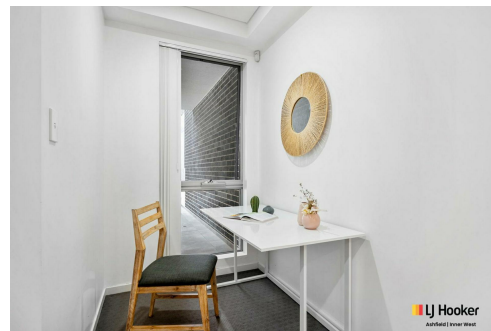
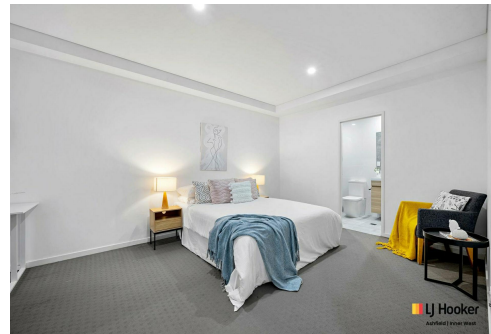
DISCLAIMER: This advertisement contains information provided by third parties. While all care is taken to ensure otherwise, LJ Hooker Ashfield does not make any representation as to the accuracy of the information contained in the advertisement, does not accept and responsibility or liability and recommends that any client make their own investigations and enquiries. All images are indicative of the property only.

More About this Property

Property ID	18CAF8B
Property Type	Apartment
Including	Air Conditioning Built-in-Robes

Alexandra McPartland 0449 022 720
Property Investment Co-ordinator | alex@ljha.com.au

LJ Hooker Ashfield (02) 9797 6044
216 Liverpool Road, ASHFIELD NSW 2131
ashfield.ljhooker.com.au | ashfield@ljha.com.au



Disclaimer: All information contained therein is gathered from relevant third parties sources. We cannot guarantee or give any warranty about the information provided. Interested parties must rely solely on their own enquiries.

LJ Hooker Ashfield
(02) 9797 6044