



Emerald, 24 Scenic Drive

YARD BIG ENOUGH FOR THE KIDS TO PLAY IN

Located on the Southside of town in the 'Riverview Estate' this family home is sure to please with features including:

Features

- * 4 Generous Bedrooms
- * Ensuite to main
- * Open plan living areas
- * Ducted air conditioner throughout
- * Single lock up garage with internal access
- * Outdoor entertainment area
- * Fully fenced yard

A MUST SEE HOME THAT WON'T LAST LONG - Call LJ Hooker Emerald today



Disclaimer: All information contained therein is gathered from relevant third parties sources. We cannot guarantee or give any warranty about the information provided. Interested parties must rely solely on their own enquiries.

LEASED

4

2

1

For Lease
Please Call

View
[ljhooker.com.au/W2EFJ0](https://l.jhooker.com.au/W2EFJ0)

Contact
Rachel Hildebrandt
0437 302 580
rhildebrandt.emerald@ljhooker.com.au

LJ Hooker Emerald
(07) 4987 5355

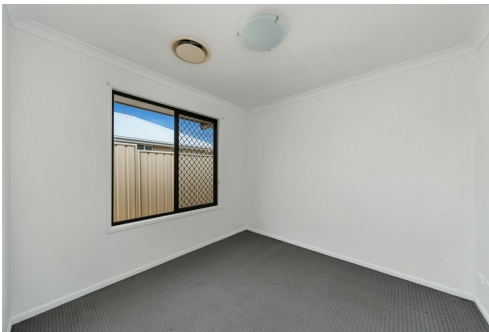
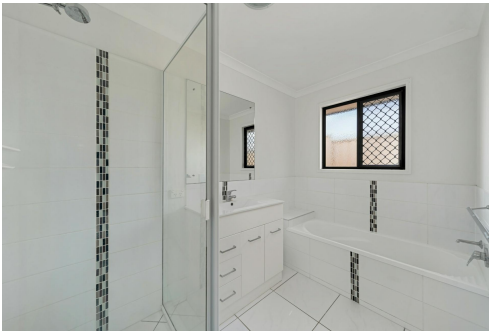
Disclaimer we have in preparing this advertisement used our best endeavors to ensure the information contained is true and accurate, but accept no responsibility and disclaim all liability in respect to any errors, omissions, inaccuracies or misstatements contained. Interested parties should make their own enquiries to verify the information contained in this advertisement.

More About this Property

Property ID	W2EFJ0
Property Type	House
Land Area	800 sqm
Including	Ensuite Air Conditioning Ducted Cooling Toilets (2) Outdoor Entertaining Built-in-Robes Secure Parking Fully Fenced Remote Garage

Rachel Hildebrandt 0437 302 580
Senior Property Manager | rhildebrandt.emerald@ljhooker.com.au

LJ Hooker Emerald (07) 4987 5355
25 Hospital Road, EMERALD QLD 4720
emerald.ljhooker.com.au | emerald@ljhooker.com.au



Disclaimer: All information contained therein is gathered from relevant third parties sources. We cannot guarantee or give any warranty about the information provided. Interested parties must rely solely on their own enquiries.

LJ Hooker Emerald
(07) 4987 5355