




50 Woodford Road, Elizabeth

3  1  0 

Freshly Updated 3-Bedroom Home in Prime Elizabeth Location!

FOR RENT

Please Call

AGENTS

Wendy Page

wendy.page@ljhces.com.au

AGENCY

LJ Hooker Craigmore | Elizabeth |

Salisbury

(08) 8255 9555

OPEN INSPECTION TIME: Click REQUEST INSPECTION button on website listing

Rent: \$490.00 Per week

Bond: \$1,960.00

Available Date: 12/12/2025

Owners Intent to Sell: No intent advised

12 Month Lease

Pets Negotiable

Smoking outside only

Apply online at: www.2apply.com

You are welcome to complete an application form online prior to viewing.

Once you have signed up for an inspection time on the website listing, we will contact you via text message with a viewing time.

Do not call for a viewing time; one will be allocated to you once you

All information contained therein is gathered from relevant third parties sources. We cannot guarantee or give any warranty about the information provided. Interested parties must rely solely on their own enquiries.

 **LJ Hooker**

have signed up via the website.

There will be no exceptions to this process.

Freshly Updated 3-Bedroom Home in Prime Elizabeth Location!

50 Woodford Road, Elizabeth, SA 5112

This fantastic, freshly updated three-bedroom home is ready for its new occupants! Offering a functional layout, spacious yard, and superb central location, this property provides comfort and convenience in one neat package.

Home Highlights & Essentials:

- Three Spacious Bedrooms: All bedrooms feature ceiling fans for added comfort.
- Built-in Robe: Storage convenience in Bedroom 1.
- Functional Layout: Includes an open-plan kitchen and dining area plus a separate lounge for flexible living space.
- Climate Control: Stay comfortable year-round with split-system air conditioning.
- Outdoor Space: Enjoy a large, secure backyard with extensive verandahs, perfect for relaxing or entertaining.
- Storage & Parking: Features a large shed and a carport with convenient drive-through access.

Unbeatable Location - Everything at Your Fingertips!
Perfectly positioned in a central, family-friendly area, this home ensures you are always close to necessities and amenities:

- Shopping & Services: Just minutes from Elizabeth City Centre and the Lyell McEwin Hospital.
- Parks & Recreation: Enjoy close proximity to Fremont Park.
- Transport Hubs: Easy access to Womma or Elizabeth Train Stations and public transport, plus quick connectivity to Main North Road for city commuting.
- Quality Schools: Zoned to Elizabeth Vale Primary and Playford International College, and close to St Mary Magdalene's School.

50 Woodford Road, Elizabeth combines comfort, location, and opportunity.

Don't miss the chance to secure this wonderful starter home!

LJ Hooker Craigmores | Elizabeth | Salisbury: the number one Real Estate Agents / Sale Agents and Property Management in the Northern Suburbs of South Australia.

Specialists in: Andrews Farm, Angle Vale, Blakeview, Burton, Craigmores, Davoren Park, Elizabeth and surrounding, Gawler, Hillbank, Munno Para, One Tree Hill, Parafield, Para Hills, Paralowie, Salisbury, Smithfield.

Disclaimer:

We have in preparing this document used our best endeavours to ensure the information contained is true and accurate, but accept no responsibility and disclaim all liability in respect to any errors, omissions, inaccuracies or misstatements contained. Prospective tenants should make their own enquiries to verify the information contained in this document.

RLA155355

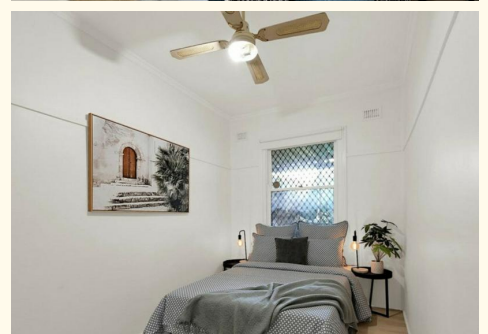
MORE DETAILS

Property ID 6834FDC
Property Type House

Wendy Page

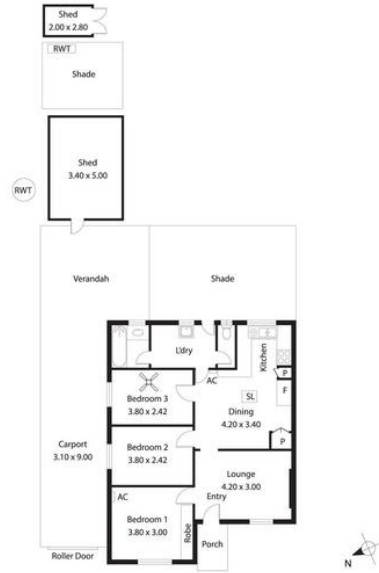
Property Investment Department Manager |
wendy.page@ljhces.com.au

LJ Hooker Craigmore | Elizabeth | Salisbury (08) 8255 9555
Shop 17, Craigmore Village, Yorktown Road, CRAIGMORE SA 5114
craigmoreelizabeth.ljhooker.com.au | Office@ljhces.com.au



All information contained therein is gathered from relevant third parties sources.
We cannot guarantee or give any warranty about the information provided.
Interested parties must rely solely on their own enquiries.

50 Woodford Road,
ELIZABETH



Living:	75.80SQM
Porch:	2.16SQM
Carport/Verandah:	52.10SQM
Shade:	40.07SQM
Shed:	22.60SQM
TOTAL:	192.81SQM

This Drawing is for illustration purposes only. All measurements are internal and approximate. Details should be independently verified.

Essential

All information contained therein is gathered from relevant third parties sources. We cannot guarantee or give any warranty about the information provided. Interested parties must rely solely on their own enquiries.