

## Elizabeth Park, 8 Bowood Street

Great Spot In The Park

3 1 2

OPEN INSPECTION TIME: Click REQUEST INSPECTION button on website listing

Rent: \$495 per week

Bond: \$1,980.00

Available Date: 22/04/2025

12 Month Lease

Pets Negotiable

Smoking outside only

Apply online at: [www.2apply.com](http://www.2apply.com)

You are welcome to complete an application form online prior to viewing.

Once you have signed up for an inspection time on the website listing, we will contact you via text message with a viewing time.

**For Lease**

\$495 per week

**View**

By Appointment

**Contact**

**Wendy Page**

[wendy.page@ljhces.com.au](mailto:wendy.page@ljhces.com.au)



**Disclaimer:** All information contained therein is gathered from relevant third parties sources.

We cannot guarantee or give any warranty about the information provided. Interested parties must rely solely on their own enquiries.

**LJ Hooker Craigmore | Elizabeth |  
Salisbury  
(08) 8255 9555**



Do not call for a viewing time; one will be allocated to you once you have signed up via the website.

There will be no exceptions to this process.

If you are looking for family housing in a great suburb, this home may tick all of your boxes.

Featuring:

- 3 spacious bedrooms with built-ins
- Great living area with lots of natural light
- Polished timber flooring throughout living area
- Updated kitchen with plenty of bench space and dishwasher
- Updated bathroom
- Ducted air conditioning throughout
- Electric roller shutters
- Carport with roller door
- Large lined garage
- Outdoor decking area
- Toolshed
- Low maintenance gardens

LJ Hooker Craigmore | Elizabeth | Salisbury: the number one Real Estate Agents / Sale Agents and Property Management in the Northern Suburbs of South Australia.

Specialists in: Andrews Farm, Angle Vale, Blakeview, Burton, Craigmore, Davoren Park, Elizabeth and surrounding, Gawler, Hillbank, Munno Para, One Tree Hill, Parafield, Para Hills, Paralowie, Salisbury, Smithfield.

Disclaimer:

We have in preparing this document used our best endeavours to ensure the information contained is true and accurate, but accept no responsibility and disclaim all liability in respect to any errors, omissions, inaccuracies or misstatements contained. Prospective tenants should make their own enquiries to verify the information contained in this document.

RLA155355

## More About this Property

Property ID	671FFDC
Property Type	House
Land Area	647 sqm

### Wendy Page

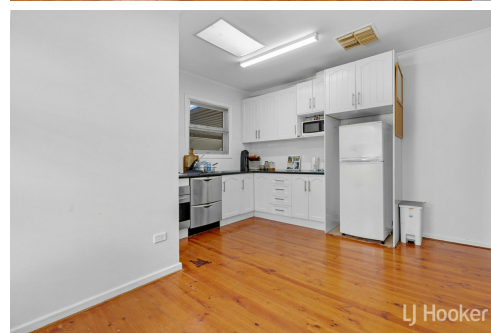
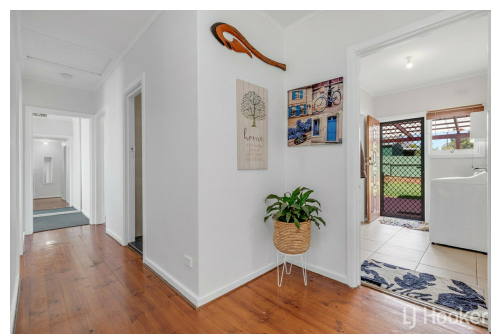
Property Investment Department Manager | [wendy.page@ljhces.com.au](mailto:wendy.page@ljhces.com.au)

**LJ Hooker Craigmore | Elizabeth | Salisbury (08) 8255 9555**

Shop 17, Craigmore Village, Yorktown Road, CRAIGMORE SA 5114  
[craigmoreelizabeth.ljhooker.com.au](mailto:craigmoreelizabeth.ljhooker.com.au) | [Office@ljhces.com.au](mailto:Office@ljhces.com.au)



**Disclaimer:** All information contained therein is gathered from relevant third parties sources. We cannot guarantee or give any warranty about the information provided. Interested parties must rely solely on their own enquiries.



**LJ Hooker Craigmore | Elizabeth |  
Salisbury  
(08) 8255 9555**



## 8 Bowood Street, Elizabeth Park

DISCLAIMER: Floorplan and area calculation are approximate and for illustration purposes only.  
Produced by **Property Portraits**

Interior	92m <sup>2</sup>	<b>210m<sup>2</sup></b> <b>TOTAL</b>
Exterior	71m <sup>2</sup>	
Garage	35m <sup>2</sup>	
Shed	12m <sup>2</sup>	