



Elizabeth East, 43A Nimitz Road

Neat Sweet & Complete !

OPEN INSPECTION TIME: Click REQUEST INSPECTION button on website listing

Rent: \$450.00 Per week

Bond: \$1,800.00

Available Date: 21/02/2024

6/12 Month Lease

Pets Negotiable

Smoking outside only

Apply online at: www.2apply.com

You are welcome to complete an application form online prior to viewing.
Once you have signed up for an inspection time on the website listing, we will



Disclaimer: All information contained therein is gathered from relevant third parties sources. We cannot guarantee or give any warranty about the information provided. Interested parties must rely solely on their own enquiries.



For Lease

Please Call

View

ljhooker.com.au/653YFDC

**LJ Hooker Craigmore | Elizabeth |
Salisbury
(08) 8255 9555**

contact you via text message with a viewing time.

Do not call for a viewing time; one will be allocated to you once you have signed up via the website. There will be no exceptions to this process.

As you head inside the home, you are greeted by three spacious bedrooms. The master bedroom includes a built-in robe with access to the central two-way bathroom. Bedroom two and three also come with built in robes, continuing on you will find the heart of the home that presents a large open plan family, meals and kitchen area. The Chef of the home will certainly love the modern kitchen providing ample storage space, stunning bench and separate gas cooktop to cook up a feast.

Features of the Home Include:

- Master bedroom with access to the central two-way bathroom and built-in robe
- Spacious bedrooms 2 and 3 offering built in robes
- Open plan kitchen, dining and living area
- Modern kitchen with gas cook top, ample cupboard and bench space and breakfast bar
- Low maintenance rear yard with ample space
- Heating and cooling for all year round comfort
- Single car garage with roller door and direct internal entry
- Conveniently located in walking distance to the local Primary School and only a couple of minutes' drive to Elizabeth City and Salisbury Shopping Centres

LJ Hooker Craigmores | Elizabeth | Salisbury: the number one Real Estate Agents / Sale Agents and Property Management in the Northern Suburbs of South Australia.

Specialists in: Andrews Farm, Angle Vale, Blakeview, Burton, Craigmores, Davoren Park, Elizabeth and surrounding, Gawler, Hillbank, Munno Para, One Tree Hill, Parafield, Para Hills, Paralowie, Salisbury, Smithfield.

Disclaimer:

We have in preparing this document used our best endeavours to ensure the information contained is true and accurate, but accept no responsibility and disclaim all liability in respect to any errors, omissions, inaccuracies or misstatements contained. Prospective tenants should make their own enquiries to verify the information contained in this document.

RLA155355



Disclaimer: All information contained therein is gathered from relevant third parties sources. We cannot guarantee or give any warranty about the information provided. Interested parties must rely solely on their own enquiries.

**LJ Hooker Craigmores | Elizabeth |
Salisbury
(08) 8255 9555**

More About this Property

Property ID 653YFDC

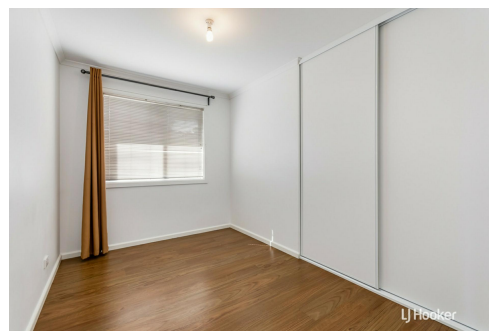
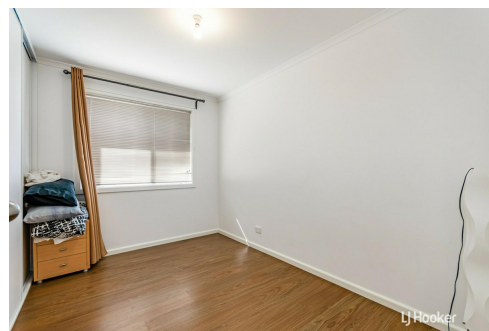
Property Type House

Land Area 487 sqm

LJ Hooker Craigmore | Elizabeth | Salisbury (08) 8255 9555

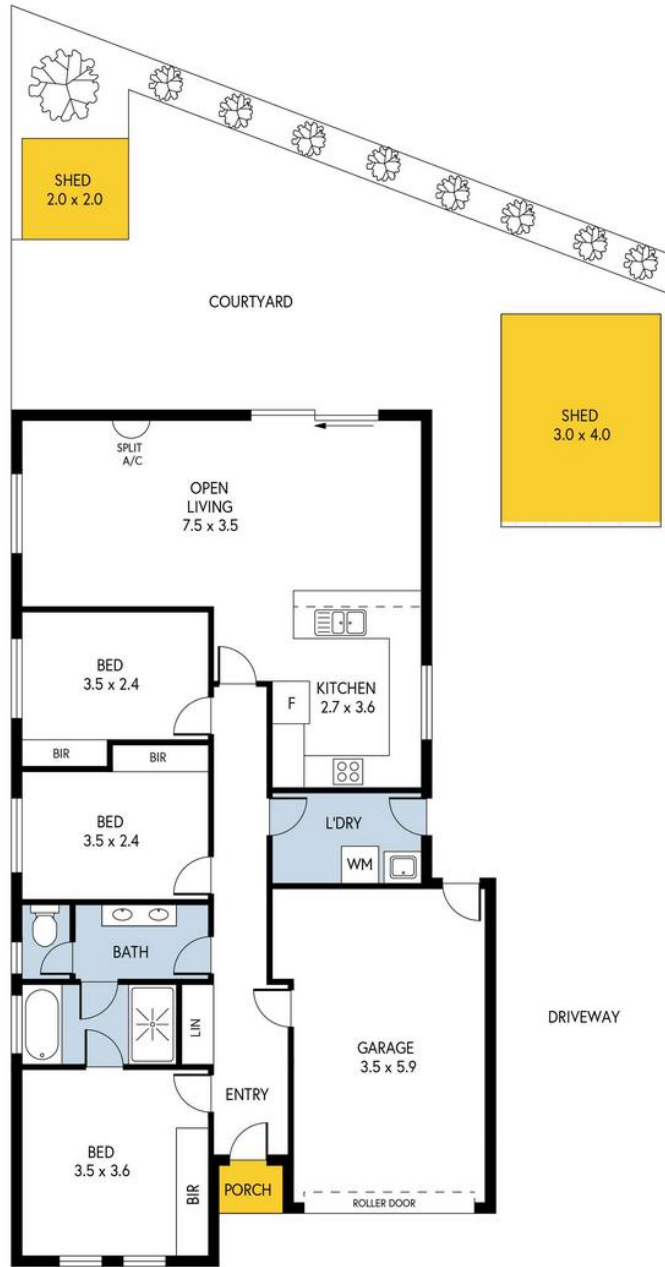
Shop 17, Craigmore Village, Yorktown Road, CRAIGMORE SA 5114

craigmoreelizabeth.ljhooker.com.au | Office@ljhces.com.au



Disclaimer: All information contained therein is gathered from relevant third parties sources. We cannot guarantee or give any warranty about the information provided. Interested parties must rely solely on their own enquiries.

**LJ Hooker Craigmore | Elizabeth |
Salisbury
(08) 8255 9555**



43A NIMITIZ ROAD, ELIZABETH EAST

INTERNAL	- 129.7 SQM
EXTERNAL	- 16.9 SQM
TOTAL	- 146.6 SQM

Please Note: Every care has been taken to verify the correctness of the areas and details used in this leaflet. No warranty or representation is given or made as to the correctness of the information supplied and neither the owners, illustrator nor the Agent accept responsibility for errors or omissions. The sketch is for illustration purposes only and intending purchasers should satisfy themselves independently regarding sizes, layout and location of the property. Please check with local council that all structures are approved by council.

PRODUCED BY CLIQUECREATIVE



**LJ Hooker Craigmore | Elizabeth |
Salisbury
(08) 8255 9555**

Disclaimer: All information contained therein is gathered from relevant third parties sources. We cannot guarantee or give any warranty about the information provided. Interested parties must rely solely on their own enquiries.