

26 Forest Drive, Elanora


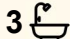
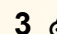
SPACIOUS FOUR BEDROOM HOME WITH HEATED POOL & STUNNING HINTERLAND VIEWS

This spacious four bedroom family home is located in a peaceful, leafy pocket of Elanora. Surrounded by greenery and with picturesque views, this two-level residence offers an opportunity for you to enjoy the serenity of the bush-just minutes from the beach.

Wake up to the sound of nature, relax and unwind on expansive balconies, or take a refreshing dip in the heated pool while soaking in the tranquil tree-top setting. Designed for comfort, flexibility, and effortless entertaining, this home is perfect for families seeking space and lifestyle.

Property Features:

- Spacious two-level family home in a highly sought-after Elanora location
- Stunning hinterland and bushland views, including views to Mt Tamborine
- Beautiful Blackbutt hardwood timber flooring throughout
- Multiple indoor and outdoor living areas, including balconies and a large verandah

4  3  3 

FOR RENT
\$1,500 Per Week

VIEW
By Appointment

AGENTS
Maree Curtis
0410 965 952
maree@ljhookersgc.com.au

Kaisi Fuller
0487 406 677
kaisi@ljhookersgc.com.au

AGENCY
LJ Hooker Southern Gold Coast
(07) 5534 4033

All information contained therein is gathered from relevant third parties sources. We cannot guarantee or give any warranty about the information provided. Interested parties must rely solely on their own enquiries.

 **LJ Hooker**

- Flexible lower level with large living/study area and two bedrooms
- Light-filled upper level with two living areas and open-plan dining
- Modern kitchen with stone benchtops, gas cooktop & Bosch dishwasher
- Private master retreat with ensuite, walk-in robe & courtyard access
- Three bathrooms in total for added convenience
- Heated swimming pool surrounded by nature
- Covered outdoor patio at ground level for year-round entertaining
- Double garage with storage plus additional space for caravan or boat

Location Highlights:

- Approx. 5 minutes to Elanora High School
- Approx. 6 minutes to The Pines Shopping Centre
- Approx. 10 minutes to local beaches
- Close to golf courses and Schuster Park

Enjoy peaceful bush living without sacrificing convenience!

Disclaimer:

All information (including but not limited to the property area, floor size, price, address and general property description) is provided as a convenience to you, and has been provided to LJ Hooker by third parties. LJ Hooker is unable to definitively confirm whether the information listed is correct or 100% accurate. LJ Hooker does not accept any liability (direct or indirect) for any injury, loss, claim, damage or any incidental or consequential damages, including but not limited to lost profits or savings, arising out of or in any way connected with the use of any information, or any error, omission or defect in the information, contained on the Website. Information contained on the Website should not be relied upon and you should make your own enquiries and seek legal advice in respect of any property on the Website. Prices displayed on the Website are current at the time of issue, but may change.

MORE DETAILS

Property ID	1WESF47
Property Type	House
Including	Ensuite Toilets (3)

Maree Curtis 0410 965 952

New Client Manager | maree@ljhookersgc.com.au

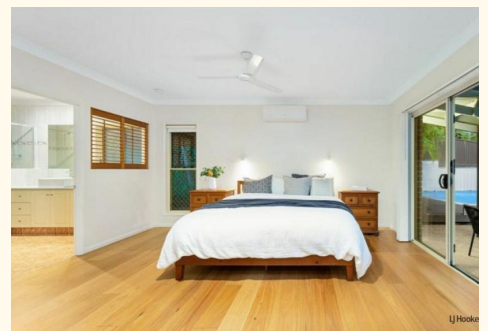
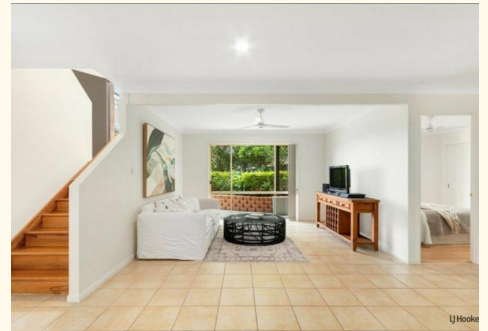
Kaisi Fuller 0487 406 677

New Client Coordinator | kaisi@ljhookersgc.com.au

LJ Hooker Southern Gold Coast (07) 5534 4033

Shop 2, 10 Fifth Avenue, PALM BEACH QLD 4221

southerngoldcoast.ljhooker.com.au | enquiries@ljhookersgc.com.au

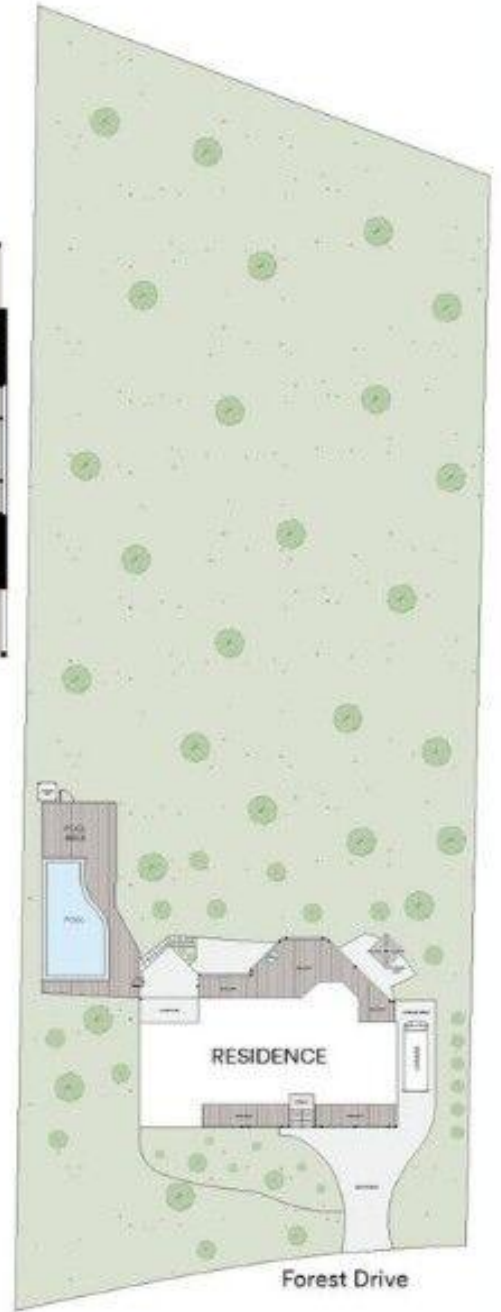




LEVEL 1



GROUND FLOOR



All information contained in this document is from sources we believe to be accurate, however we cannot guarantee its accuracy. Interested persons should make and rely on their own enquiries in relation to measurements, dimensions, layout, furniture and descriptions.

LJ Hooker 85 M²
 INTERNAL AREA : 107 M²
 LAND SIZE : 2,377 M²

All information contained therein is gathered from relevant third parties sources.
 We cannot guarantee or give any warranty about the information provided.
 Interested parties must rely solely on their own enquiries.

