

Edmondson Park, Unit 401/120 Passendale Road MODERN ONE BEDROOM UNIT

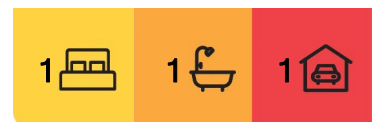
LJ Hooker Leppington | Austral presents 401/120 Passendale Road, Edmondson Park.

This near new modern unit features the following:

- Spacious living area with tiled timber style flooring
- Modern design kitchen with waterfall stone bench top, gourmet stainless steel appliances including gas stove, microwave and dishwasher with mirrored splash back with LED strip lighting
- Spacious main bedroom with built-in robe and balcony access
- Ducted air conditioning throughout
- Tiled balcony
- European style laundry with clothes dryer
- Main bathroom tiled floor to ceiling with extra large shower



Disclaimer: All information contained therein is gathered from relevant third parties sources. We cannot guarantee or give any warranty about the information provided. Interested parties must rely solely on their own enquiries.



For Lease
Please Call

View
ljhooker.com.au/11NMHCV

Contact
Trinity Boscutti
0418 637 708
pm.leppington@ljhooker.com.au

LJ Hooker Leppington | Austral
(02) 9606 4311

- Intercom to main entrance
- Single car space in secure underground car park with lift access throughout
- 1 lock up storage cage
- Access to 2 roof top terraces, perfect for entertaining or just to unwind
- Well maintained complex

Google Maps:

750m to Lillian Bratkovic Park

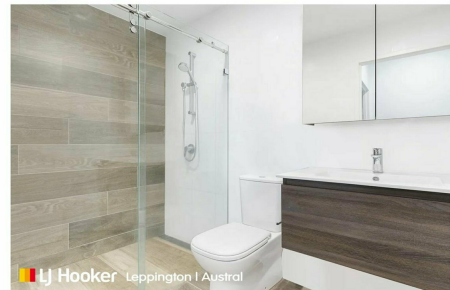
1.3km to Ed Square

1.1 km to Edmondson Park Train Station

3.1km to Crossroads Homemaker Centre & Hotel

How to apply: All attendees must be registered to inspect the property, once viewed you will receive a link via email and PIN code to complete the application process

Please be aware that if you do not request a booking time, you will not be notified of any open homes or cancellations.



More About this Property

Property ID	11NMHCV
Property Type	Apartment
Including	Air Conditioning Ducted Cooling Ducted Heating Toilets (1) Intercom Courtyard Balcony Dishwasher Outdoor Entertaining Built-in-Robes Secure Parking

Trinity Boscutti 0418 637 708
 Property Investment Manager | pm.leppington@ljhooker.com.au

LJ Hooker Leppington | Austral (02) 9606 4311
 Leppington Village Shopping Centre, Shop GC1, 108-116 Ingleburn Road,
 LEPPINGTON NSW 2179
leppington.ljhooker.com.au | leppington@ljhooker.com.au



Disclaimer: All information contained therein is gathered from relevant third parties sources. We cannot guarantee or give any warranty about the information provided. Interested parties must rely solely on their own enquiries.

LJ Hooker Leppington | Austral
(02) 9606 4311