



## Eastgardens, 1105/128 Banks Avenue

**\*\* DEPOSIT TAKEN\*\*** Bright apartment offering stunning views of Botany Bay and a serene golf course landscape.

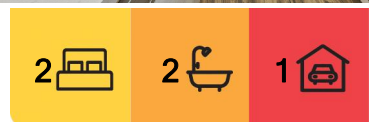
Nestled within the vibrant Pagewood Green development, this chic apartment in Allium boasts a coveted corner location, flooding the space with natural light and offering sweeping views of Botany Bay and the nearby golf course. Its contemporary design seamlessly integrates lounge, dining, and kitchen areas, extending onto a spacious balcony. Featuring two generously sized bedrooms with ample storage, full-length windows, and sleek modern bathrooms, this residence epitomises comfort and sophistication.

### Property Features:

- Open-plan layout connecting lounge, dining, and kitchen areas.
- Gas kitchen with an island bench, stone countertops, and top-quality appliances.
- Private balcony perfect for al fresco dining with stunning views of Botany Bay and the golf course.



**Disclaimer:** All information contained therein is gathered from relevant third parties sources. We cannot guarantee or give any warranty about the information provided. Interested parties must rely solely on their own enquiries.



**For Lease**  
Please Call

**View**  
[ljhooker.com.au/1Y5HYY](http://ljhooker.com.au/1Y5HYY)

**Contact**  
**Paloma Soulos**  
0466 975 880  
[paloma.soulos@ljdoublebay.com](mailto:paloma.soulos@ljdoublebay.com)

**LJ Hooker Double Bay**  
**(02) 9185 2816**

- 2 light-filled bedrooms with built-in robes, full-length windows, and a master ensuite.
- 2 fully tiled bathrooms, including an ensuite with a bathtub.
- Secure car space, ample storage, internal laundry, and ducted air conditioning.
- Access to an indoor pool, gym, sauna, spa, outdoor cinema, and more.
- Landscaped gardens, childcare, retail, cafes, and a supermarket on-site.
- Secure parking, basketball court, and playground.
- Situated just 8km from Sydney's bustling CBD with easy access to public transport, Westfield Eastgardens, pristine beaches, and Sydney Airport.
- Onsite bus stop with direct services to Bondi Junction and Kingsford Light Rail station; nearby bus interchange at Westfield Eastgardens.
- Close to the Lakes Golf Course, Bonnie Doon Golf Club, and Mutch Park.
- Short drive to renowned beaches including Maroubra, Coogee, and Clovelly.

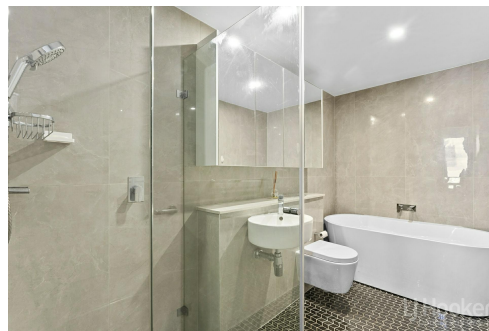
This apartment presents an unparalleled opportunity for modern urban living, offering both luxury and convenience in one of Sydney's most sought-after locations.

## More About this Property

<b>Property ID</b>	1Y5HYY
<b>Property Type</b>	Unit
<b>Including</b>	<ul style="list-style-type: none"> <li>Study</li> <li>Ducted Cooling</li> <li>Ducted Heating</li> <li>Balcony</li> <li>Dishwasher</li> <li>Built-in-Robes</li> <li>Close to Schools</li> <li>Close to Shops</li> <li>Close to Transport</li> <li>Pool</li> <li>Spa</li> </ul>

**Paloma Soulos 0466 975 880**  
 Head of Property Management / LREA | [paloma.soulos@ljhdoublbay.com](mailto:paloma.soulos@ljhdoublbay.com)

**LJ Hooker Double Bay (02) 9185 2816**  
 6/710 New South Head Road, ROSE BAY NSW 2029  
[doublebay.ljhooker.com.au](http://doublebay.ljhooker.com.au) | [admin@ljhdoublbay.com](mailto:admin@ljhdoublbay.com)



**LJ Hooker Double Bay**  
**(02) 9185 2816**

**Disclaimer:** All information contained therein is gathered from relevant third parties sources. We cannot guarantee or give any warranty about the information provided. Interested parties must rely solely on their own enquiries.