

East Perth, Unit 1006/8-10 Adelaide Tce

Your Friends Will Come To You

Walk into the City centre from this swish studio apartment, complete with a balcony with views across the Swan River. Or catch the CAT bus around the city for free. "The complex was designed to pamper residents with style, space, views, natural light, high-quality fittings, and fully integrated appliances. Residents can enjoy many facilities on their doorstep, including the spacious pool deck with Japanese-style hot tubs, barbeque facilities, and stunning Swan River Vistas. They also have access to a residents' lounge, media room, a fully equipped gym (including weights, treadmills, benches, and individual weight machines) and a concierge." from the original designer's post.

The apartment has a separation wall between the living room and bedroom for privacy. There is a balcony with sweeping views over the Swan from the WACA to the Convention Centre. All the modern fittings and fixtures throughout plus air conditioning.

Key Features:



Disclaimer: All information contained therein is gathered from relevant third parties sources. We cannot guarantee or give any warranty about the information provided. Interested parties must rely solely on their own enquiries.



For Lease
Please Call

View
ljhooker.com.au/5G1QFFB

**LJ Hooker Victoria Park | Belmont
(WA)
(08) 9473 7777**

- * Studio apartment
- * Resort-style living with all facilities
- * Air conditioning
- * Easy access to the city via free public transport
- * Lock and Leave
- * Secure parking
- * Walk to the City or the River parklands

*** Please note for viewings; the complex is secure, please arrive 5 minutes early and wait out the front for our agent to collect you. Please try to be on time as once our agent has taken others up to the apartment it can be difficult to return to the gate to collect you. If you arrive within the last 5 minutes of the booking time, we may not be able to show you through due time restrictions and subsequent viewings at other properties.

- Unfurnished
- 12 months initial lease term

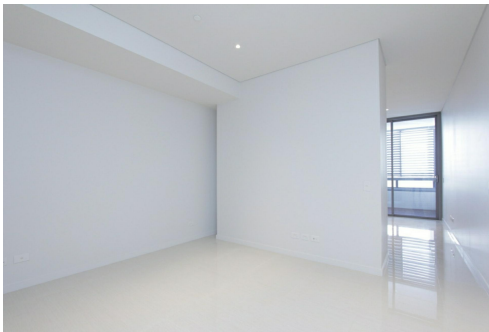
Please register your details by requesting/booking an inspection

*** ARE YOU A LANDLORD? If you are looking for property management services, we would love to hear from you. Contact our Business Development Team on 0407 722 867 or newrentals@ljhvicpark.com.au for a no-obligation and confidential conversation.

More About this Property

Property ID	5G1QFFB
Property Type	Unit
Including	Air Conditioning Secure Parking Close to Shops Close to Transport

LJ Hooker Victoria Park | Belmont (WA) (08) 9473 7777
 288 Albany Highway, VICTORIA PARK WA 6100
victoriapark-belmontwa.ljhooker.com.au | reception@ljhvicpark.com.au



Disclaimer: All information contained therein is gathered from relevant third parties sources. We cannot guarantee or give any warranty about the information provided. Interested parties must rely solely on their own enquiries.

LJ Hooker Victoria Park | Belmont (WA) (08) 9473 7777