



East Maitland, 25/22 Molly Morgan Drive

"LOOK NO FURTHER!!!"

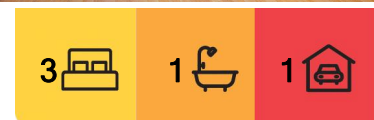
- Three good sized bedrooms all with ceiling fans and built-in robes
- Open plan living/dining with air-conditioning.
- Good size kitchen with electric cooktop and oven.
- Well-appointed main bathroom with separate shower, bath and toilet.
- Internal laundry with 2nd toilet.
- Single lock-up garage with internal and external access.
- Fully fenced courtyard
- Locate close to schools, Greenhills Shopping Centre, Maitland Hospital and Maitland Private Hospital

* Photos not to be relied upon

Disclaimer: The photos indicating the condition of the advertised property may or may not be an exact reflection of the current condition of the property. If you have any concerns



Disclaimer: All information contained therein is gathered from relevant third parties sources. We cannot guarantee or give any warranty about the information provided. Interested parties must rely solely on their own enquiries.



For Lease
\$510 pw

View
By Appointment

Contact
Kevin Yarrington
0432 633 257
kyarrington.maitland@ljhooker.com.au

LJ Hooker Maitland
(02) 4933 5511

please contact the office to confirm this prior to any inspection.

More About this Property

Property ID	1DSMF6H
Property Type	Townhouse
Including	Air Conditioning Built-in-Robes Carpeted Close to Schools Close to Shops Close to Transport

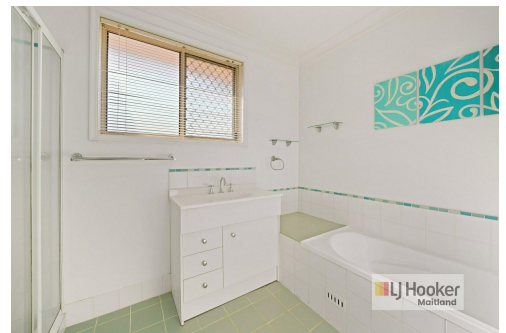
Kevin Yarrington 0432 633 257

Property Investment Manager | kyarrington.maitland@ljhooker.com.au

LJ Hooker Maitland (02) 4933 5511

24 Ken Tubman Drive, MAITLAND NSW 2320

maitland.ljhooker.com.au | maitland@ljhooker.com.au



Disclaimer: All information contained therein is gathered from relevant third parties sources. We cannot guarantee or give any warranty about the information provided. Interested parties must rely solely on their own enquiries.

LJ Hooker Maitland
(02) 4933 5511