

## East Maitland, 8 Knoll Crescent

### WHAT AN AWESOME LOCATION!

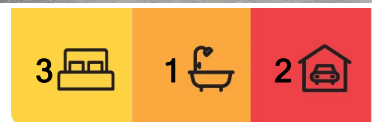
Only a stones throw from Stockland Greenhills shopping centre & Maitland Private Hospital and only a short drive to local schools, train station & restaurants, this is the place to be.

Located in a quiet cul-de-sac, this home has carpet & tiling throughout, Split system air conditioning, ceiling fans and the kitchen includes quality appliances.

- \* 3 carpeted bedrooms
- \* Bathroom including bath
- \* Double, lock-up garage
- \* Neat lawns & gardens
- \* Aluminum shutters throughout
- \* Sorry, not suitable for pets
- \* Photos not to be relied upon



**Disclaimer:** All information contained therein is gathered from relevant third parties sources. We cannot guarantee or give any warranty about the information provided. Interested parties must rely solely on their own enquiries.



#### For Lease

Please Call

#### View

[ljhooker.com.au/1D6DF6H](http://ljhooker.com.au/1D6DF6H)

#### Contact

**Haylee Williams**

[maitland@ljhooker.com.au](mailto:maitland@ljhooker.com.au)

**LJ Hooker Maitland**  
**(02) 4933 5511**

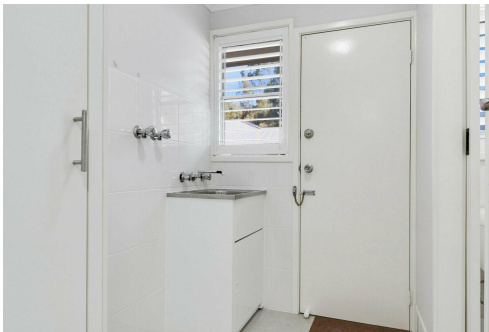
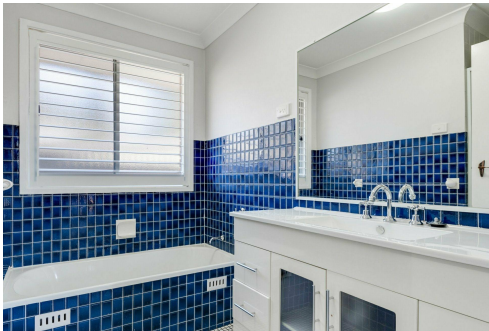
Disclaimer: The photos indicating the condition of the advertised property may or may not be an exact reflection of the current condition of the property. If you have any concerns please contact the office to confirm this prior to any inspection.

## More About this Property

Property ID	1D6DF6H
Property Type	House
Including	Air Conditioning Built-in-Robes

**Haylee Williams**  
Property Officer | [maitland@ljhooker.com.au](mailto:maitland@ljhooker.com.au)

**LJ Hooker Maitland (02) 4933 5511**  
24 Ken Tubman Drive, MAITLAND NSW 2320  
[maitland.ljhooker.com.au](mailto:maitland.ljhooker.com.au) | [maitland@ljhooker.com.au](mailto:maitland@ljhooker.com.au)



**LJ Hooker Maitland**  
**(02) 4933 5511**

**Disclaimer:** All information contained therein is gathered from relevant third parties sources. We cannot guarantee or give any warranty about the information provided. Interested parties must rely solely on their own enquiries.