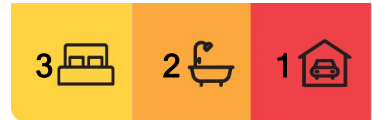




East Maitland, 17 Raymond Terrace Road

Beautifully Presented Double Brick Home

This beautifully presented, double brick 3 bedroom house with timber floorboards and high ceilings is conveniently located 300 metres to Victoria Street Train Station. Separate air conditioned lounge room and an ornate fireplace. Modern spacious kitchen that offers gas cooking and stainless steel appliances. There is a separate meals and open plan tiled family room located at the rear of the home. Second shower and toilet to the laundry. Fully fenced yard with off street parking available under the carport, with a garden shed for storage.



For Lease

Please Call

View

ljhooker.com.au/RS8F79

Contact

Bernadette Gleeson

0401 296 884

bgleeson@ljhhv.com.au



LJ Hooker Singleton
(02) 6572 4930

Disclaimer: All information contained therein is gathered from relevant third parties sources. We cannot guarantee or give any warranty about the information provided. Interested parties must rely solely on their own enquiries.

More About this Property

Property ID RS8F79

Property Type House

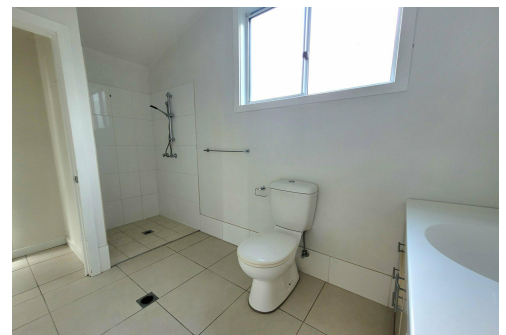
Bernadette Gleeson

Senior Property Manager | bgleeson@ljhvh.com.au

LJ Hooker Singleton (02) 6572 4930

7/172 John Street, SINGLETON NSW 2330

singleton.ljhooker.com.au | reception@ljhvh.com.au



LJ Hooker Singleton
(02) 6572 4930

Disclaimer: All information contained therein is gathered from relevant third parties sources. We cannot guarantee or give any warranty about the information provided. Interested parties must rely solely on their own enquiries.