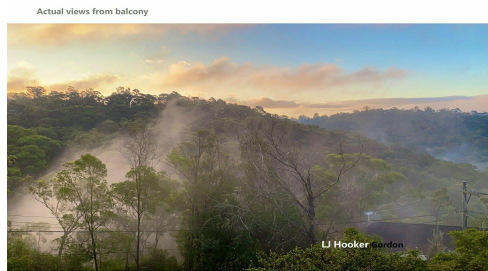


LJ Hooker Gordon

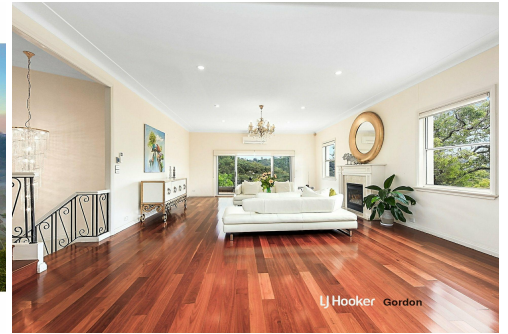


LJ Hooker Gordon



Actual views from balcony

LJ Hooker Gordon



LJ Hooker Gordon

## East Lindfield, 33 Robinson St Family Paradise with Commanding Spectacular Views

Entertainers Delight! This immaculate grand home has been lovingly cared for and is located on the high side of the street with panoramic views from the North!

As you enter the property you will be impressed by the glamorous foyer with Swarovski chandeliers leading you up to the grand north facing lounge with gas fireplace and sparkling solid timber floor. On entry level, there is also a large rumpus room with a full bathroom that could be used as separate accommodation.

Spacious and light filled throughout, this property boasts four bedrooms all with wardrobes, air con, and a sunny quiet study. The main bedroom features a large private terrace and north valley view. The well planned open kitchen and family dining area are always bright, complimented by the skylights and the private back garden views!

Extensive wooden deck extending family dining area to the swimming pool is perfect for a

5	3	1
---	---	---

**For Lease**  
\$1,750 per week

**View**  
By Appointment

**Contact**  
**Kenny Gong**  
0456 887 000  
kgong@ljhookergordon.com.au



**LJ Hooker Gordon**  
**(02) 9496 8000**

**Disclaimer:** All information contained therein is gathered from relevant third parties sources. We cannot guarantee or give any warranty about the information provided. Interested parties must rely solely on their own enquiries.

growing family to enjoy a peaceful lifestyle all year round! There is a garage with automatic door.

- Glamorous foyer with a separate accommodation/5th bedroom downstairs
- Spacious lounge with gas fireplace enjoy the picturesque views
- Walk from light filled study to sunny private north garden
- Generous sized bedrooms all with and air cons
- Contemporary open kitchen flooded with sun by skylights
- Family dining area open to extensively decked alfresco area
- Private back garden and Aqua clear Swimming pool
- Approx 550m to Lindfield East Public School, bus stops, shops, etc.
- Within Killara High School Catchment
- SLUG with auto door (One room next to it is locked for owner's storage. It is not included in the lease.)

\* Gas Fireplace is for decorative purpose only not being workable.

DISCLAIMER: The above information has been furnished from sources we deem to be reliable. We have not verified whether or not the information is accurate and do not accept any responsibility to any person and do no more than pass it on. All interested parties should rely on their own enquiries in order to determine the accuracy of this information.

## More About this Property

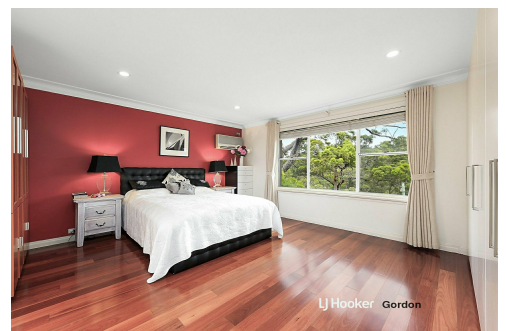
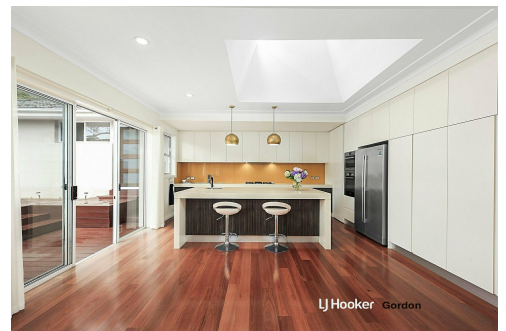
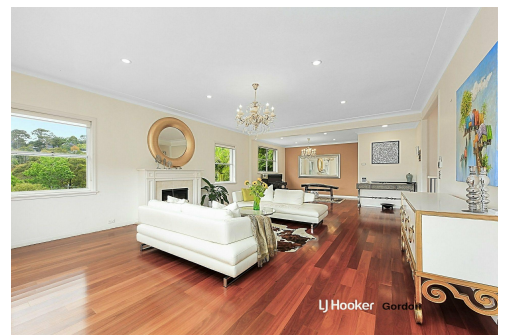
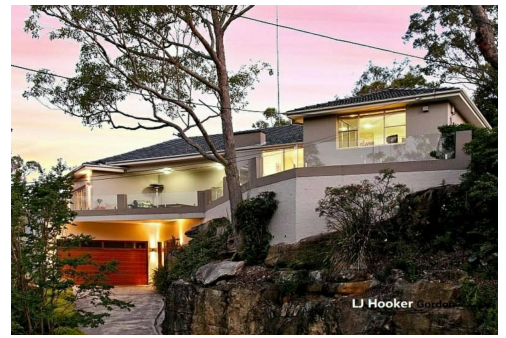
<b>Property ID</b>	JR5HJX
<b>Property Type</b>	House
<b>Including</b>	Toilets (3)

**Kenny Gong 0456 887 000**

Managing Director | Sales Executive | [kgong@ljhookergordon.com.au](mailto:kgong@ljhookergordon.com.au)

**LJ Hooker Gordon (02) 9496 8000**

Shop 1, 777-779 Pacific Highway, GORDON NSW 2072  
[gordon.ljhooker.com.au](http://gordon.ljhooker.com.au) | [reception@ljhookergordon.com.au](mailto:reception@ljhookergordon.com.au)



**LJ Hooker Gordon**  
**(02) 9496 8000**

**Disclaimer:** All information contained therein is gathered from relevant third parties sources. We cannot guarantee or give any warranty about the information provided. Interested parties must rely solely on their own enquiries.