

Eagle Vale, 4 Cipolin Close

Four Bed House for Lease in Eagle Vale

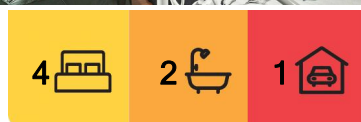
You will love this well presented brick home located on a beautiful family quiet street in the growing Eagle-vale area. Just minutes from m5/m7 motorways and Gregory Hills Drive, this home boasts a covered entertaining area for those family get togethers or quiet drink overlooking low maintenance grass area for the kids to play.

The property features:

- + 4 good sized bedrooms with built-ins
- + Master bed with ensuite & walk in robe
- + Separate lounge & dining
- + Bathroom with separate toilet
- + Modern kitchen with ample storage
- + Floating timber floor
- + Split system air-con
- + Single lock up garage
- + Rear covered entertainment area & huge backyard



Disclaimer: All information contained therein is gathered from relevant third parties sources. We cannot guarantee or give any warranty about the information provided. Interested parties must rely solely on their own enquiries.



For Lease
Please Call

View
ljhooker.com.au/BHDHUA

Contact
Nahid Zaman
0410 703 203
nahid.minto@ljhooker.com.au
Silvia Demanuele
0432 614 776
minto@ljhooker.com.au

LJ Hooker Minto
02 8734 3211

Please contact Nahid Zaman for more details and to book an inspection.

More About this Property

Property ID	BHDHUA
Property Type	House
Including	Toilets (2)

Nahid Zaman 0410 703 203

Business Development Manager | nahid.minto@ljhooker.com.au

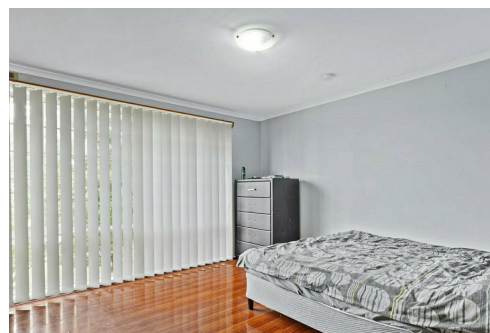
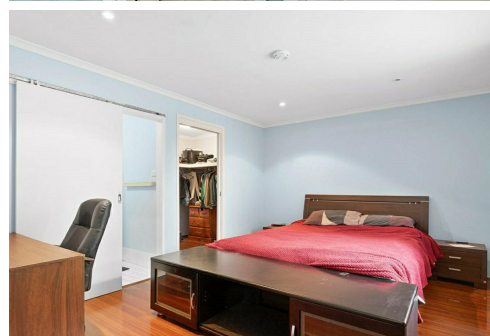
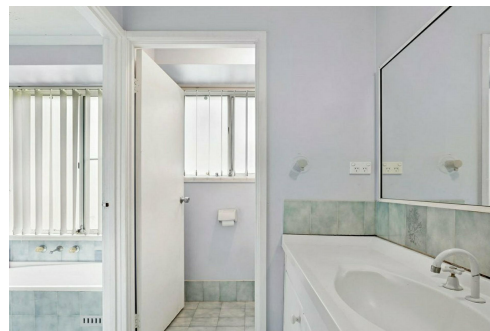
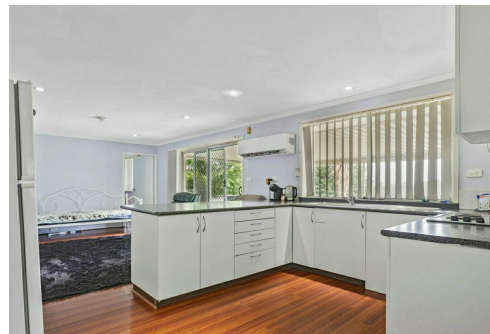
Silvia Demanuele 0432 614 776

Property Manager | minto@ljhooker.com.au

LJ Hooker Minto 02 8734 3211

Shop 72, 10 Brookfield Road, MINTO NSW 2566

minto@ljhooker.com.au | minto@ljhooker.com.au



Disclaimer: All information contained therein is gathered from relevant third parties sources.
We cannot guarantee or give any warranty about the information provided. Interested parties must rely solely on their own enquiries.

LJ Hooker Minto
02 8734 3211