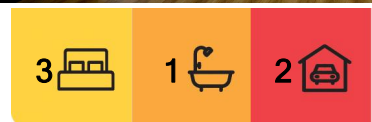


Eagle Point, 139 Bay Road

NEAT HOME CLOSE TO THE LAKE

Beautiful 3 bedroom home featuring open plan living flowing to covered deck, perfect for soaking up the winter sun and entertaining friends and family. Other features of this lovely property is a high tandem carport, ideal for the large caravan and double carport, enclosed back yard and a glimpse of beautiful lake views.



For Lease
Please Call

View
ljhooker.com.au/MDMFCA

Contact
Lucy Darby
0422 914 067
ldarby.paynesville@ljhooker.com.au



Disclaimer: All information contained therein is gathered from relevant third parties sources. We cannot guarantee or give any warranty about the information provided. Interested parties must rely solely on their own enquiries.

**LJ Hooker Paynesville | Lakes
Entrance | Metung
(03) 5156 6166**

More About this Property

| | |
|---------------|---|
| Property ID | MDMFCA |
| Property Type | House |
| Including | Air Conditioning Balcony Fully Fenced |

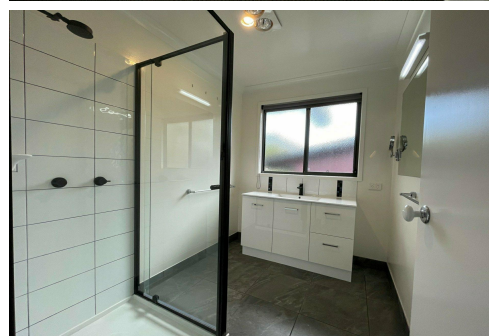
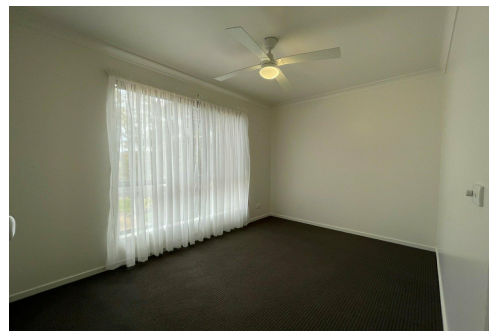
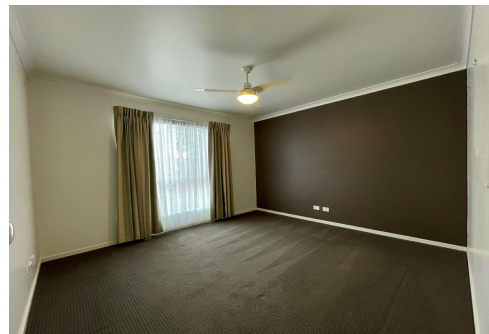
Lucy Darby 0422 914 067

Property Manager | ldarby.paynesville@ljhooker.com.au

LJ Hooker Paynesville | Lakes Entrance | Metung (03) 5156 6166

25A Esplanade, PAYNESVILLE VIC 3880

paynesville.ljhooker.com.au | paynesville@ljhooker.com.au



Disclaimer: All information contained therein is gathered from relevant third parties sources.
We cannot guarantee or give any warranty about the information provided. Interested parties must rely solely on their own enquiries.

**LJ Hooker Paynesville | Lakes
Entrance | Metung
(03) 5156 6166**