

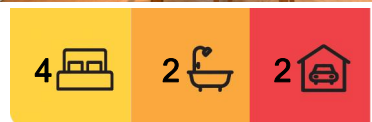
## Dutton Park, 50 Railway Terrace

### CHARMING QUEENSLANDER IN BSSSC CATCHMENT

This 2 level Queenslander located in the convenience of Dutton Park has the charm to be called home straight away! This double-storey house offers 3 large bedrooms, 1 bathroom, spacious open plan living and dining area, plus front and rear decks upstairs. Downstairs you will find a second living area including a bedroom, living area, kitchenette and bathroom.

You will feel welcomed upstairs as you enter via the beautifully polished wooden floors and the sense of easy living and appeal will make you feel at home. The kitchen with a cottage appeal is a chef's delight. You will be able to cook up a storm and serve your friends and family out on your large deck where you will be able to kick back and relax.

The location of 50 Railway Terrace along with the space and leafy large yard it offers, makes it a property hard to resist.



**For Lease**  
Please Call

**View**  
[ljhooker.com.au/1EC6H31](http://ljhooker.com.au/1EC6H31)



**Disclaimer:** All information contained therein is gathered from relevant third parties sources. We cannot guarantee or give any warranty about the information provided. Interested parties must rely solely on their own enquiries.

**LJ Hooker Annerley | Yeronga |  
Salisbury  
(07) 3848 7369**

Situated just a short stroll to public transport, the Boggo Road precinct's popular markets and Buranda Shopping Centre, you have everything at your fingertips. The CBD is only 2kms away, and the Green Bridge is close by for easy access to the University of Queensland. This property is located in the Brisbane State High and Brisbane South State Secondary Collage catchments and close to both Mater & P.A hospitals.

Features of 50 Railway Terrace at a glance:

- Open plan lounge/dining
- Kitchen with a cottage appeal
- Three spacious bedrooms upstairs
- Self-contained granny flat with facilities
- Front and rear decks
- Traditional VJ's throughout with French doors
- Polished floors in living area
- Separate access to front and rear yard
- Split system air-conditioning
- Established gardens
- Tandem remote control lockup garage
- Within the Brisbane State High & BSSSC catchment

BOOK AN INSPECTION ONLINE - ITS EASY!

Click on the \*Book Inspection\* or \*Request an Inspection\* Button under the open for inspections times

\*\*\* By registering for an inspection, you will be INSTANTLY informed of any updates, changes or cancellations for your property appointment. If no one registers for an inspection time - then that inspection may not proceed. If there are no times set for this property yet, STILL REGISTER and as soon as times are set, you will be advised of the day and time \*\*\*

TO APPLY for this rental property please go direct to our website (below) or contact our office on 07 3848 7369. <https://annerleyyeronga.ljhooker.com.au/search/property-for-rent/page-1>

Disclaimer: Whilst every care is taken in the preparation of the information contained herein, we will not be held liable for any errors in typing or information. All information is considered correct at the time of writing and any interested parties should satisfy themselves in this respect.



**LJ Hooker Annerley | Yeronga |  
Salisbury  
(07) 3848 7369**

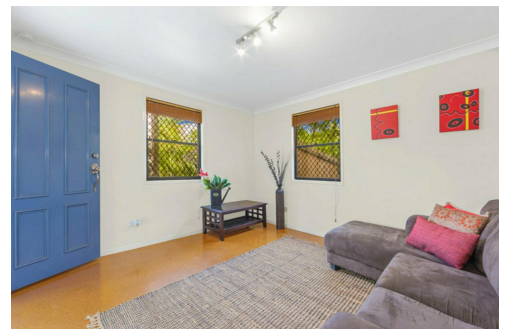
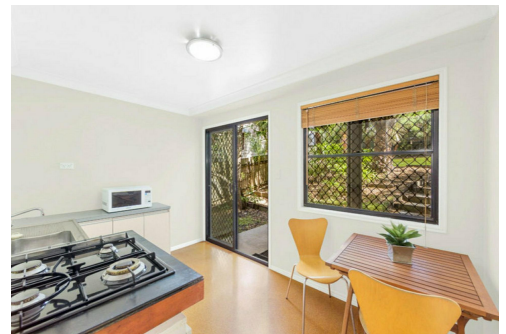
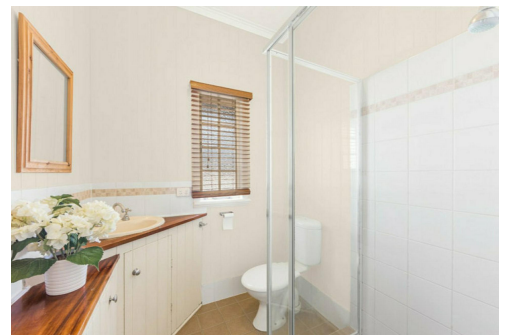
**Disclaimer:** All information contained therein is gathered from relevant third parties sources. We cannot guarantee or give any warranty about the information provided. Interested parties must rely solely on their own enquiries.



## More About this Property

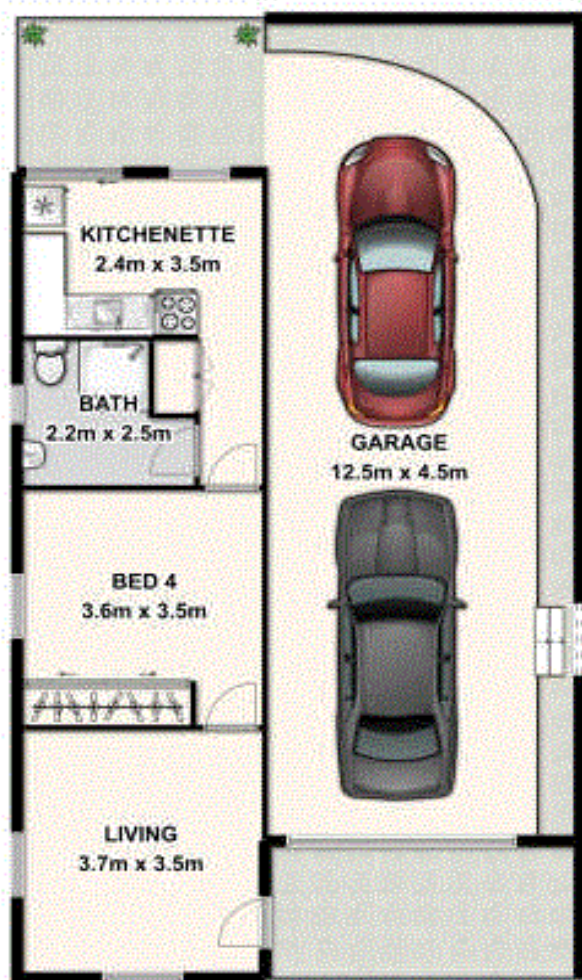
Property ID	1EC6H31
Property Type	House
Land Area	576 sqm
Including	Ensuite Air Conditioning Deck Floorboards Remote Garage

**LJ Hooker Annerley | Yeronga | Salisbury (07) 3848 7369**  
443 Ipswich Road, ANNERLEY QLD 4103  
[annerleyyeronga.ljhooker.com.au](mailto:annerleyyeronga.ljhooker.com.au) | [admin@ljhookerproperty.com.au](mailto:admin@ljhookerproperty.com.au)



**Disclaimer:** All information contained therein is gathered from relevant third parties sources.  
We cannot guarantee or give any warranty about the information provided. Interested parties must rely solely on their own enquiries.

**LJ Hooker Annerley | Yeronga |  
Salisbury  
(07) 3848 7369**



Ground Floor



First Floor



50 Railway Terrace, Dutton Park

This plan is for illustrative purposes only. All areas, dimensions and fittings are approximate. Plants are decorative only.



APPROX INT:	189 sqm
APPROX EXT:	111 sqm
<b>TOTAL:</b>	<b>300 sqm</b>