

## Docklands, 2014/628 Flinders Street

Exclusive 2-Bedroom Apartment in Docklands - Now Available for Lease!

\*Fully Furnished Option is Available at Extra Cost

Melbourne Quarter is located at the heart of Docklands, which offers a life of modern style. MQ is close to Marvel Stadium, which is just walking distance to Southern Cross Station, also not even mention local cafes, restaurants and groceries.

Amenities include Spa and sauna, steam room, 25-metre indoor swimming pool, multi-purpose gym Yoga and function rooms and 20-seat theatrette.

Features include:

- The apartment is on the 20th floor
- Close to The Yarra River, Batman Park, Spencer Street and South Wharf DFOs.
- Split air conditioning in the living room



**Disclaimer:** All information contained therein is gathered from relevant third parties sources. We cannot guarantee or give any warranty about the information provided. Interested parties must rely solely on their own enquiries.



**For Lease**  
Please Call

**View**  
[ljhooker.com.au/NJ4HC2](http://ljhooker.com.au/NJ4HC2)

**LJ Hooker City Residential**  
**(03) 9600 2166**

- Stainless steel cooking appliances, oven and dishwasher
- Bedrooms flooded with natural light
- Modern bathroom and laundry
- Video security entrance and lifts

\*\*\*\*\*Arranging an inspection is easy!\*\*\*\*\*

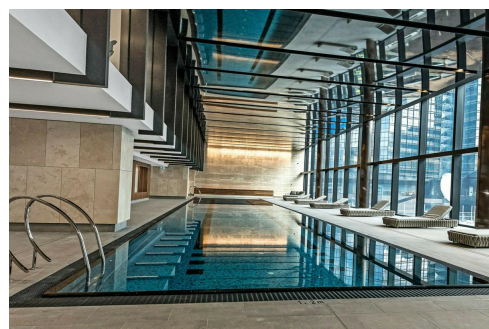
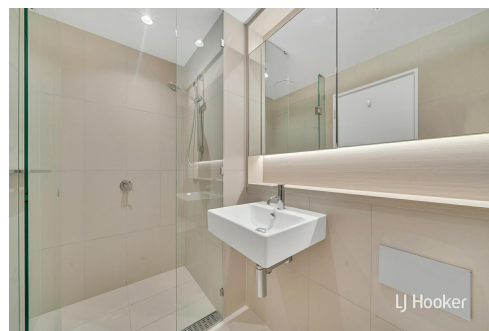
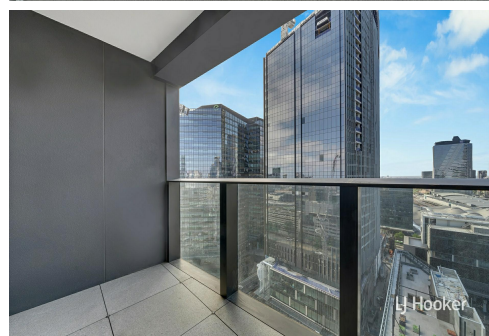
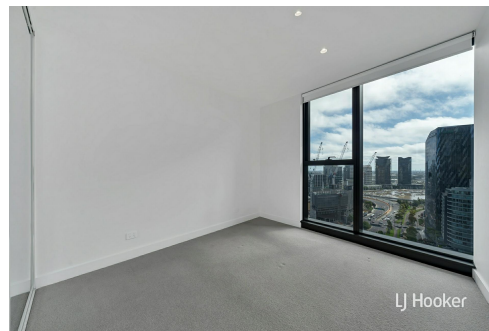
To book a time to inspect, simply click on the Book an Inspection Time button OR click Contact Agent, email through your details so we can reply with available appointment times for you to register to inspect. By registering, you will be INSTANTLY informed of any updates, changes or cancellations for your appointment.

## More About this Property

<b>Property ID</b>	NJ4HC2
<b>Property Type</b>	Apartment

### LJ Hooker City Residential (03) 9600 2166

Upper Ground Floor, 439-445 Lonsdale St, MELBOURNE VIC 3000  
[cityresmelbourne.ljhooker.com.au](http://cityresmelbourne.ljhooker.com.au) | [cityresmelbourne@ljhooker.com.au](mailto:cityresmelbourne@ljhooker.com.au)



**Disclaimer:** All information contained therein is gathered from relevant third parties sources. We cannot guarantee or give any warranty about the information provided. Interested parties must rely solely on their own enquiries.

**LJ Hooker City Residential**  
**(03) 9600 2166**