



Docklands, 1101/81 South Wharf Drive

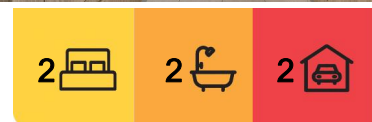
Fully furnished 2-bedroom, 2-bathroom and 2 car space apartment with great water views (Short term lease of 3-6 months is available)!

Brimming with lavish Docklands luxury with added benefit of being close to condition, this apartment is in the member of the Yarra's Edge team. 'Forge Apartments' is a true urban oasis.

This apartment has a practical and thoughtful layout, with magnificent views out to the nearby New Quay and Victoria Harbour precincts as well as the CBD.

These lasting vistas can be seen from the sizeable undercover balcony. The ultra-spacious lounge and dining zone, and the master bedroom are conveniently appointed by an exquisite ensuite inclusive of bath and dual vanities.

The designer stone kitchen has stainless steel Smeg appliances, island bench and the



For Lease

\$950 Fully Furnished pw

View

By Appointment

LJ Hooker City Residential
(03) 9600 2166

Disclaimer: All information contained therein is gathered from relevant third parties sources. We cannot guarantee or give any warranty about the information provided. Interested parties must rely solely on their own enquiries.

ideal location overlooking the open plan living area. The second bedroom delivers gorgeous Bay vistas framed by elegantly curved windows with BIR's, while other extras include a European laundry, ducted heating and cooling, video intercom entry, 2 secure car spaces, access to the Wharf's Club with gym and pool, private kitchen/dining room and cinema.

Forge Apartments is positioned in the new Wharf's Entrance area (within Yarra's Edge), which delivers a quiet and almost village-like lifestyle where you are within easy reach of South Wharf restaurants and bars, DFO outlet shopping, public transport and Citylink.

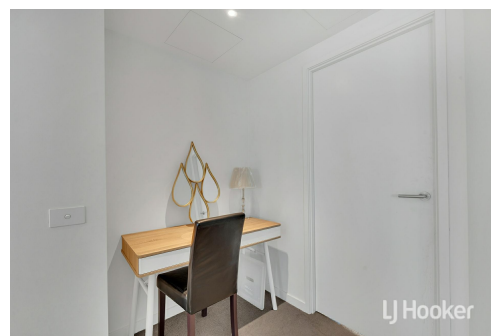
****Arranging an inspection is easy!****

To book a time to inspect, simply click on the Book an Inspection Time button OR click Contact Agent, email through your details so we can reply with available appointment times for you to register to inspect. By registering, you will be INSTANTLY informed of any updates, changes or cancellations for your appointment.

More About this Property

Property ID	NBYHC2
Property Type	Apartment

LJ Hooker City Residential (03) 9600 2166
Upper Ground Floor, 439-445 Lonsdale St, MELBOURNE VIC 3000
cityresmelbourne.ljhooker.com.au | cityresmelbourne@ljhooker.com.au



Disclaimer: All information contained therein is gathered from relevant third parties sources. We cannot guarantee or give any warranty about the information provided. Interested parties must rely solely on their own enquiries.

LJ Hooker City Residential
(03) 9600 2166