



9 Mayflower Close, Davoren Park

3 Bedroom Home Located in Cul-de-Sac

OPEN INSPECTION TIME: Click REQUEST INSPECTION button on website listing

Rent: \$540.00 Per week

Bond: \$2,160.00

Available Date: 11/06/2026

12 Month Lease

Pets Negotiable

Smoking outside only


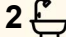

Owners Intent to Sell: No intent advised

Apply online at: www.2apply.com

You are welcome to complete an application form online prior to viewing.

Once you have signed up for an inspection time on the website listing, we will contact you via text message with a viewing time.

Do not call for a viewing time; one will be allocated to you once you have signed up via the website.

3  2  1 

FOR RENT

\$540 per week

VIEW

Mon 15th Jun @ 4:40PM - 4:50PM

AGENTS

Wendy Page

wendy.page@ljhces.com.au

AGENCY

LJ Hooker Craigmore | Elizabeth |

Salisbury

(08) 8255 9555

All information contained therein is gathered from relevant third parties sources.
We cannot guarantee or give any warranty about the information provided.
Interested parties must rely solely on their own enquiries.

 LJ Hooker

There will be no exceptions to this process.

Be quick or you might miss out, this home is in a great location. Walking distance to the local train station, Public Transport & the Munno Para Shopping Centre

Property Features:

- Master bedroom with walk through robe and ensuite
- Built in robes to the other 2 bedrooms
- Kitchen with gas cooktop, underbench oven, dishwasher, pantry and good bench space
- Open plan living area with split system for all round comfort
- Easy care vinyl flooring though out
- Single garage with internal access
- Undercover area to the rear with sliding door access to the living area, great for the evening bbq or just relax
- Close to trains and public transport, central to either Munno Para or Elizabeth shopping center's

LJ Hooker Craigmores | Elizabeth | Salisbury: the number one Real Estate Agents / Sale Agents and Property Management in the Northern Suburbs of South Australia.

Specialists in: Andrews Farm, Angle Vale, Blakeview, Burton, Craigmores, Davoren Park, Elizabeth and surrounding, Gawler, Hillbank, Munno Para, One Tree Hill, Parafield, Para Hills, Paralowie, Salisbury, Smithfield.

Disclaimer:

We have in preparing this document used our best endeavours to ensure the information contained is true and accurate, but accept no responsibility and disclaim all liability in respect to any errors, omissions, inaccuracies or misstatements contained. Prospective tenants should make their own enquiries to verify the information contained in this document.

RLA155355

MORE DETAILS

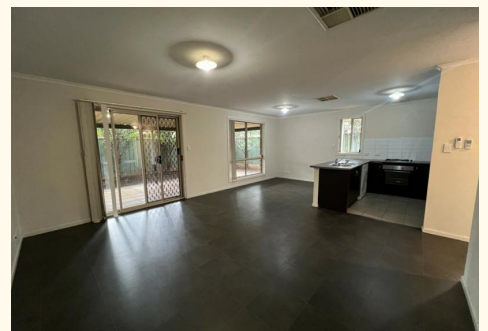
Property ID	68X3FDC
Property Type	House
Including	Built-in-Robes

Wendy Page

Senior Investment Manager | wendy.page@ljhces.com.au

LJ Hooker Craigmores | Elizabeth | Salisbury (08) 8255 9555

Shop 17, Craigmores Village, Yorktown Road, CRAIGMORE SA 5114
craigmoreelizabeth.ljhooker.com.au | Office@ljhces.com.au





9 MAYFLOWER CLOSE, DAVOREN PARK

Please Note: Every site has been shown to verify the accuracy of the area and details used in this plan. No warranty is made as to the accuracy of the information provided and under the terms of the contract of sale, the purchaser shall be responsible for any variation. The plan is for illustrative purposes only and does not constitute an offer of any property. The plan is for illustrative purposes only and does not constitute an offer of any property. The plan is for illustrative purposes only and does not constitute an offer of any property. Please check with local council that all structures are approved by council.

INTERNAL - 135.9 SQM
EXTERNAL - 30.0 SQM
TOTAL - 165.9 SQM

PRODUCED BY CLIQUECREATIVE

All information contained therein is gathered from relevant third parties sources.
We cannot guarantee or give any warranty about the information provided.
Interested parties must rely solely on their own enquiries.