

# Davoren Park, 22 McPherson Grove

Modern 3-Bedroom Family Home

3 1 1

OPEN INSPECTION TIME: Click REQUEST INSPECTION button on website listing

- Rent: \$500.00 Per week
- Bond: \$2,000
- Available Date: 22/01/2025
- Owners Intent to Sell: No intent advised
- 12 Month Lease
- Pets Negotiable
- Smoking outside only

**For Lease**  
Please Call  

---

**View**  
[ljhooker.com.au/66NRFDC](http://ljhooker.com.au/66NRFDC)  

---

**Contact**  
**Wendy Page**  
[wendy.page@ljhces.com.au](mailto:wendy.page@ljhces.com.au)

Apply online at: [www.2apply.com](http://www.2apply.com)

You are welcome to complete an application form online prior to viewing.



**Disclaimer:** All information contained therein is gathered from relevant third parties sources.  
We cannot guarantee or give any warranty about the information provided. Interested parties must rely solely on their own enquiries.

**LJ Hooker Craigmore | Elizabeth |  
Salisbury  
(08) 8255 9555**

Once you have signed up for an inspection time on the website listing, we will contact you via text message with a viewing time.

Do not call for a viewing time; one will be allocated to you once you have signed up via the website.

There will be no exceptions to this process.

- Open-Plan Living: Spacious and inviting living area seamlessly flowing into the dining area.
- Three generously sized bedrooms
- Carpeted floors all throughout
- Large sliding doors connecting indoor and outdoor living.
- Spacious Rear Yard
- Vertical Roller Blinds on windows
- Ducted AC all throughout the house

LJ Hooker Craigmore | Elizabeth | Salisbury: the number one Real Estate Agents / Sale Agents and Property Management in the Northern Suburbs of South Australia.

Specialists in: Andrews Farm, Angle Vale, Blakeview, Burton, Craigmore, Davoren Park, Elizabeth and surrounding, Gawler, Hillbank, Munno Para, One Tree Hill, Parafield, Para Hills, Paralowie, Salisbury, Smithfield.

Disclaimer:

We have in preparing this document used our best endeavours to ensure the information contained is true and accurate, but accept no responsibility and disclaim all liability in respect to any errors, omissions, inaccuracies or misstatements contained. Prospective tenants should make their own enquiries to verify the information contained in this document.

RLA155355

## More About this Property

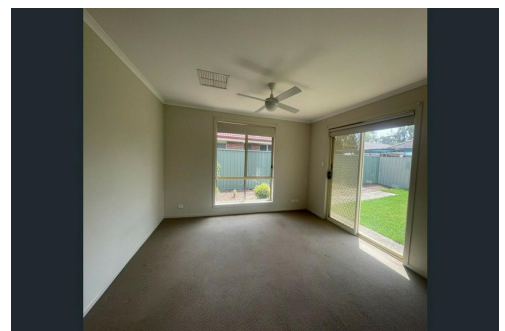
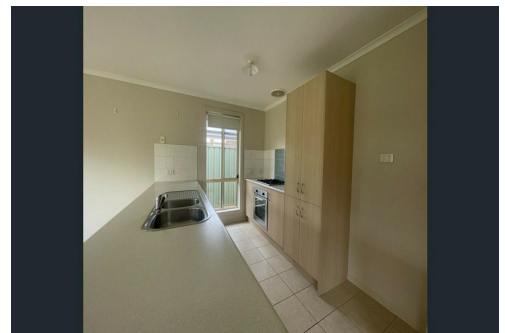
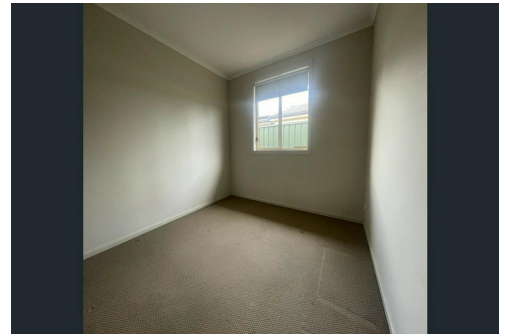
Property ID	66NRFDC
Property Type	House
Land Area	300 sqm

### Wendy Page

Property Investment Department Manager | [wendy.page@ljhces.com.au](mailto:wendy.page@ljhces.com.au)

### LJ Hooker Craigmore | Elizabeth | Salisbury (08) 8255 9555

Shop 17, Craigmore Village, Yorktown Road, CRAIGMORE SA 5114  
[craigmoreelizabeth.ljhooker.com.au](mailto:craigmoreelizabeth.ljhooker.com.au) | [Office@ljhces.com.au](mailto:Office@ljhces.com.au)



**Disclaimer:** All information contained therein is gathered from relevant third parties sources. We cannot guarantee or give any warranty about the information provided. Interested parties must rely solely on their own enquiries.

**LJ Hooker Craigmore | Elizabeth |  
Salisbury  
(08) 8255 9555**