

## Darwin City, 54/79 Mitchell Street

Spoilt for choice

LJ Hooker Darwin are pleased to have on offer this cosy 2-bedroom home home. Enjoy the lovely natural breeze throughout the residence with this surprisingly spacious floor plan.

As you step inside you will find the property offers a spacious feel with an open plan lounge and dining area and large glass louvre windows.

Partially furnished with;

Queen bed

Double bed

Sofa bed couch

This apartment is conveniently within walking distance to the Waterfront, Esplanade and Darwin City. The property provides excellent value for its size and



**Disclaimer:** All information contained therein is gathered from relevant third parties sources. We cannot guarantee or give any warranty about the information provided. Interested parties must rely solely on their own enquiries.

2

1

1

**For Lease**

Please Call

**View**

[ljhooker.com.au/5BZ3F2X](http://ljhooker.com.au/5BZ3F2X)

**Contact**

**Chantelle Dalton**

[cdalton@ljhookerdarwin.com.au](mailto:cdalton@ljhookerdarwin.com.au)

**LJ Hooker Darwin**  
**(08) 8924 0900**



location with allocated car park.

This property will not last long. Enquire today!

## More About this Property

<b>Property ID</b>	5BZ3F2X
<b>Property Type</b>	Apartment
<b>Including</b>	Air Conditioning

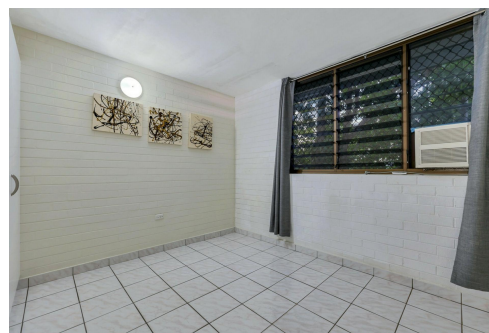
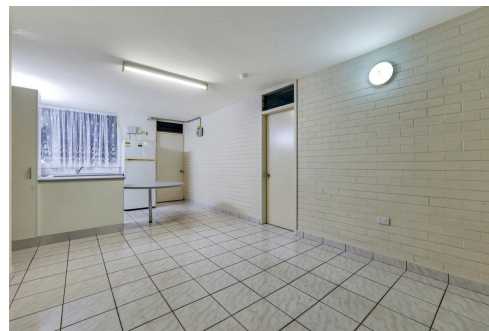
### Chantelle Dalton

Property Investment Manager | [cdalton@ljhookerdarwin.com.au](mailto:cdalton@ljhookerdarwin.com.au)

### LJ Hooker Darwin (08) 8924 0900

Shop 1/25 Parap Road, PARAP NT 0820

[darwin.ljhooker.com.au](http://darwin.ljhooker.com.au) | [reception@ljhookerdarwin.com.au](mailto:reception@ljhookerdarwin.com.au)



**Disclaimer:** All information contained therein is gathered from relevant third parties sources. We cannot guarantee or give any warranty about the information provided. Interested parties must rely solely on their own enquiries.

**LJ Hooker Darwin**  
**(08) 8924 0900**



Floor plans and site plans are for illustrative purposes only. They are not part of any legal document or title and are subject to errors, omission, and inaccuracies. Whilst every attempt has been made to ensure the accuracy of this plan, measurements of doors, windows, rooms, cupboards etc are approximate only.

APPROXIMATE AREA  
LIVING AREA : 55.0m<sup>2</sup>  
TOTAL AREA : 55.0 m<sup>2</sup>