



## Darra, 97 Rowe Terrace

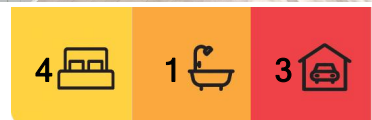
### abCOMFORT AND STYLE ON ROWE TERRACE

Tastefully renovated, 97 Rowe Terrace offers a flexible layout for its next tenant. With 4 bedrooms on offer and an additional sunroom, there is enough space for the whole family.

Enter the home via the front stairs, greeted by a central hallway. There are 2 smaller bedrooms to the front of the layout, one could make a great home office or kids' playroom. Each side of the hall sit 2 larger bedrooms, the main bedroom is air-conditioned.

The updated eat-in kitchen is positioned near the back of the home, offering air-conditioning, oversized oven with induction cooktop, overhead exhaust and ample bench and cupboard space. The oversized lounge room is positioned beside the kitchen ensuring the cook of the home stays connected to the family.

The back sunroom would make for a perfect study / work from home space or a separate dining space. The main bathroom has been renovated and offers a shower, vanity



**For Lease**  
Please Call

**View**  
[ljhooker.com.au/1EPJH31](https://ljhooker.com.au/1EPJH31)

**Contact**  
**Josephine Elvin**  
0457 000 897  
[joey.elvin@ljhookerproperty.com.au](mailto:joey.elvin@ljhookerproperty.com.au)



**Disclaimer:** All information contained therein is gathered from relevant third parties sources. We cannot guarantee or give any warranty about the information provided. Interested parties must rely solely on their own enquiries.

**LJ Hooker Annerley | Yeronga |**  
**Salisbury**  
**(07) 3848 7369**

complete with a mirror with in-built light. The separate toilet is positioned to the side.

Underneath the house you will find the laundry, ample storage and room to park 2 cars or the trailer with a double carport also on offer. For visitors there is plenty of street parking available. Complete this package with solar panels to keep your electricity costs to a minimum.

Conveniently located close to schools including Darra State School & Our Lady of the Sacred Heart Catholic Primary School both within walking distance, walk to the train station & bus stop, moments to shopping centres.

Features of 97 Rowe Terrace at a glance:

- 4 bedrooms
- Main bedroom with air-conditioning
- Updated kitchen with air-conditioning, oversized oven with induction cooktop, overhead exhaust and ample bench & cupboard space
- Oversized lounge room
- Additional sunroom / study
- Renovated main bathroom with a shower, vanity complete with a mirror with in-built light
- Separate toilet
- Secure parking under the house for 2 cars
- Laundry downstairs in the garage
- Carport
- Solar Panels
- Walk to Darra State School & Our Lady of the Sacred Heart Catholic Primary School
- Walk to the train station & bus stop
- Moments to shopping centres

BOOK AN INSPECTION ONLINE - ITS EASY!

Click on the \*Book Inspection\* or \*Request an Inspection\* Button under the open for inspections times

\*\*\* By registering for an inspection, you will be INSTANTLY informed of any updates, changes or cancellations for your property appointment. If no one registers for an inspection time - then that inspection may not proceed. If there are no times set for this property yet, STILL REGISTER and as soon as times are set, you will be advised of the day and time \*\*\*

TO APPLY for this rental property please go direct to our website (below) or contact our office on 07 3848 7369. <https://annerleyyeronga.ljhooker.com.au/search/property-for-rent/page-1>

Disclaimer: Whilst every care is taken in the preparation of the information contained herein, we will not be held liable for any errors in typing or information. All information is considered correct at the time of writing and any interested parties should satisfy themselves in this respect.



**Disclaimer:** All information contained therein is gathered from relevant third parties sources. We cannot guarantee or give any warranty about the information provided. Interested parties must rely solely on their own enquiries.

**LJ Hooker Annerley | Yeronga |  
Salisbury  
(07) 3848 7369**



## More About this Property

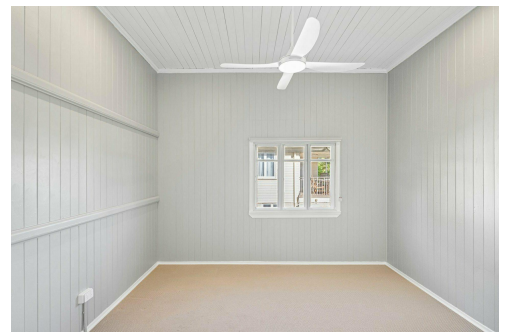
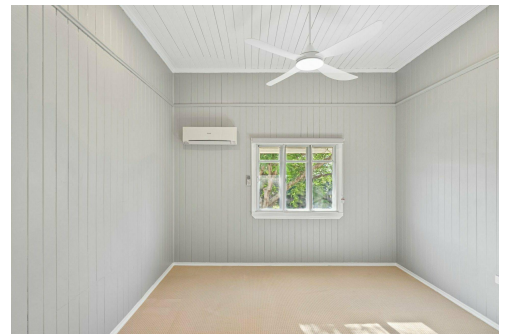
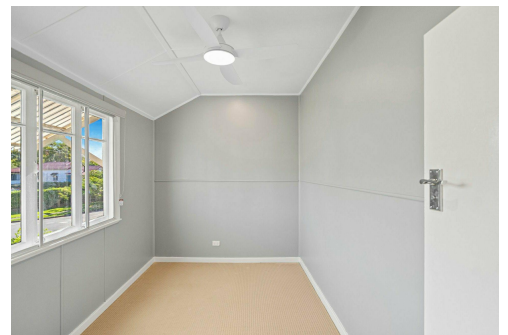
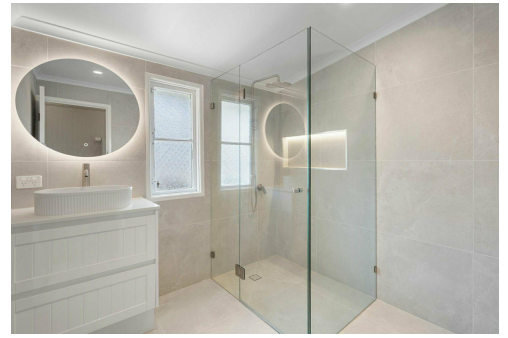
<b>Property ID</b>	1EPJH31
<b>Property Type</b>	House
<b>Land Area</b>	607 sqm
<b>Including</b>	Study Air Conditioning Dishwasher Floorboards Secure Parking

**Josephine Elvin 0457 000 897**

Property Manager & New Business Manager | Sales Associate to Jane Elvin |  
joey.elvin@ljhookerproperty.com.au

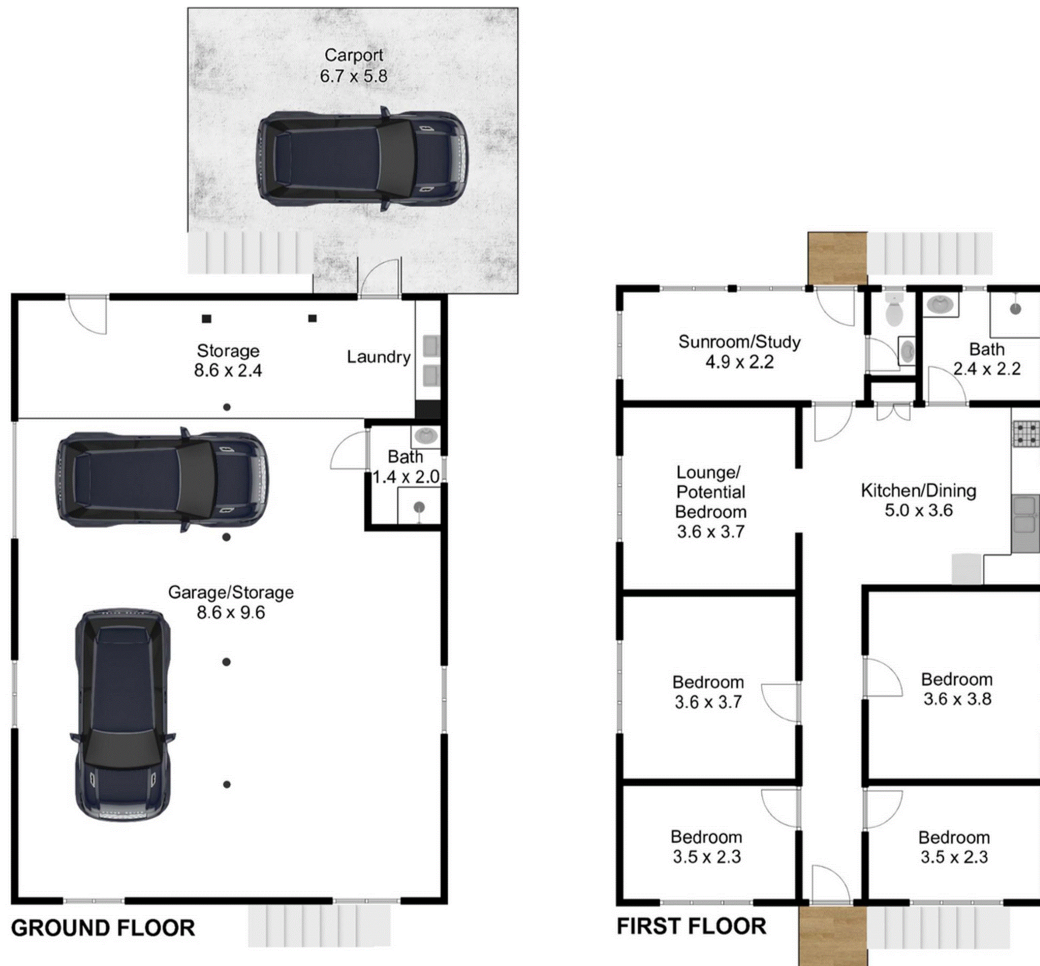
**LJ Hooker Annerley | Yeronga | Salisbury (07) 3848 7369**

443 Ipswich Road, ANNERLEY QLD 4103  
annerleyyeronga.ljhooker.com.au | admin@ljhookerproperty.com.au



**Disclaimer:** All information contained therein is gathered from relevant third parties sources.  
We cannot guarantee or give any warranty about the information provided. Interested parties must rely solely on their own enquiries.

**LJ Hooker Annerley | Yeronga |  
Salisbury  
(07) 3848 7369**



## 97 Rowe Terrace, Darra

Internal 105m<sup>2</sup> | Garage/Storage 105m<sup>2</sup> | Carport 35m<sup>2</sup> | Total 245m<sup>2</sup>

5 Bed

2 Bath

3 Car

**LJ Hooker**

**FAST FOCUS**

Floorplan for illustrative purposes only. All measurements are approximate only and should not be relied upon.

**LJ Hooker**

**LJ Hooker Annerley | Yeronga |  
Salisbury  
(07) 3848 7369**

**Disclaimer:** All information contained therein is gathered from relevant third parties sources. We cannot guarantee or give any warranty about the information provided. Interested parties must rely solely on their own enquiries.