

## Cromer, 20/5 Carousel Close

### Modern Spacious & Sunny

This modern and stylish north-facing apartment offers light-filled, open-plan living with stone floors throughout. It features two bathrooms, one with underfloor heating, and built-in wardrobes in the bedrooms.

The sleek kitchen is equipped with gas cooking, and there's a convenient internal laundry. Comfort is assured with reverse cycle air conditioning, while security is enhanced by an intercom system and access to a secure complex.

The property also includes a covered north-facing balcony, a secure underground car space, and a separate generous storage cage.

2

2

1

**For Lease**  
Please Call

**View**  
[ljhooker.com.au/1NKJGAX](http://ljhooker.com.au/1NKJGAX)

**Contact**  
**Christian Ryals**  
0404 471 287  
[christian.ryals@ljhooker.com.au](mailto:christian.ryals@ljhooker.com.au)

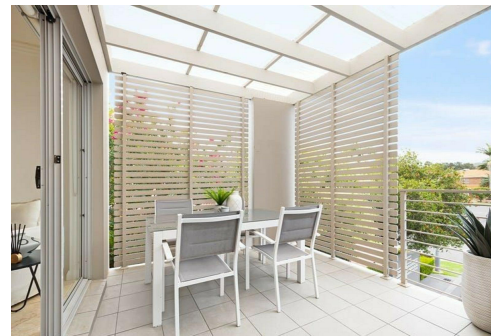


**Disclaimer:** All information contained therein is gathered from relevant third parties sources. We cannot guarantee or give any warranty about the information provided. Interested parties must rely solely on their own enquiries.

**LJ Hooker Dee Why**  
(02) 9971 2877

## More About this Property

Property ID	1NKJGAX
Property Type	Apartment
Including	Ensuite Air Conditioning Built-in-Robes Car Parking - Basement Close to Schools Close to Shops Close to Transport



**Christian Ryals 0404 471 287**

Principal | christian.ryals@ljhooker.com.au

**LJ Hooker Dee Why (02) 9971 2877**

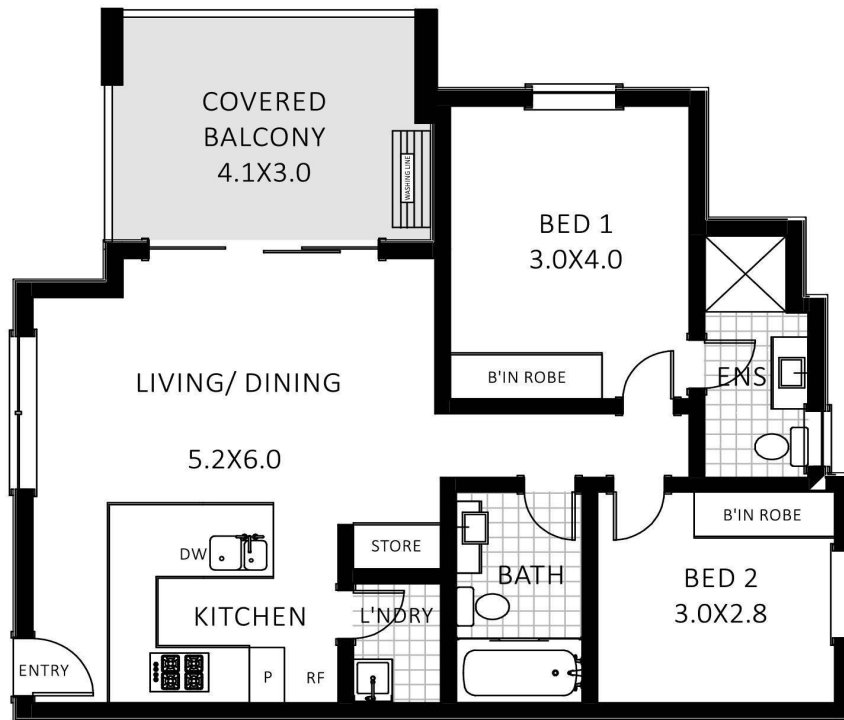
854 Pittwater Road, DEE WHY NSW 2099

deewhy.ljhooker.com.au | deewhy@ljhooker.com.au

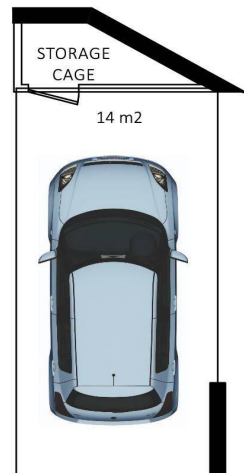


**LJ Hooker Dee Why**  
**(02) 9971 2877**

**Disclaimer:** All information contained therein is gathered from relevant third parties sources.  
We cannot guarantee or give any warranty about the information provided. Interested parties must rely solely on their own enquiries.

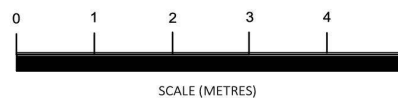


ENTRY LEVEL



SECURE BASEMENT  
LEVEL PARKING

**LJ Hooker**  
Dee Why



## 20/5 Carousel Close, Cromer

Measurements are indicative and in metres. The site plan and floor plan are not to scale. Bushes and trees are placed for illustration purposes. Plans should not be relied on and interested parties should make and rely on their own enquiries.