

## Concord, 6 Emerson Street

Light and sunny - a perfect one bedroom unit

TO VIEW: Please REGISTER in Trademe for set viewing times and day.

6A Emerson Street, Concord, Dunedin

If a spacious, tidy, warm and private flat is what you are after then look no further.

With a shared terrace area to relax on, light filled dinning, lounge and kitchen area its no wonder the last tenant stayed on for so long. This Mediterranean feel property is perfect for a couple.

Location wise it is close to public transport and the motorway making a commute into town easy. It has excellent storage, tidy and practical bathroom with shower, vanity and toilet and to complete a good size bedroom.



**For Lease**  
Please Call

**View**  
[ljhooker.co.nz/3NBPGDS](http://ljhooker.co.nz/3NBPGDS)

**Contact**  
**Haley Milne**  
[haley@ljhdunedin.co.nz](mailto:haley@ljhdunedin.co.nz)



**Disclaimer:** All information contained therein is gathered from relevant third parties sources. We cannot guarantee or give any warranty about the information provided. Interested parties must rely solely on their own enquiries.

**LJ Hooker Dunedin**  
**(03) 470 1370**  
Wayne Graham Realty Ltd

Don't hesitate to book for a viewing for this one!

Available now

Maximum residents- Two

No pets sorry

## More About this Property

Property ID	3NBPGDS
Property Type	House
Licensed Real Estate Agents (REAA2008)	

### Haley Milne

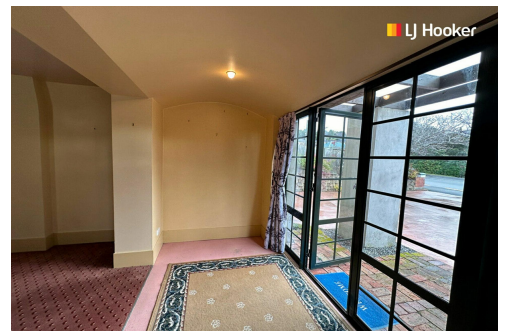
Administration | Marketing | [haley@ljhdunedin.co.nz](mailto:haley@ljhdunedin.co.nz)

### LJ Hooker Dunedin (03) 470 1370

Wayne Graham Realty Ltd

63 Musselburgh Rise, DUNEDIN 9013

[dunedin@ljhdunedin.co.nz](mailto:dunedin@ljhdunedin.co.nz) | [dunedin@ljhdunedin.co.nz](mailto:dunedin@ljhdunedin.co.nz)



**Disclaimer:** All information contained therein is gathered from relevant third parties sources.  
We cannot guarantee or give any warranty about the information provided. Interested parties must rely solely on their own enquiries.

**LJ Hooker Dunedin**  
**(03) 470 1370**  
Wayne Graham Realty Ltd