

Clyde North, 14 Aspire Avenue

IMMACULATE AND MODERN 4 BEDROOM HOUSE IN CLYDE

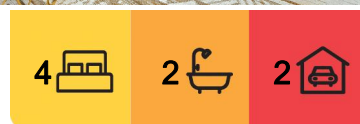
This beautiful 4 bedroom home in Clyde North is situated in Meridian Estate master planned neighbourhood created with community in mind.

A blend of stylish homes, tree-lined streets, parks and wetlands, all woven together with cycling and pedestrian paths. Located only moments from an abundance of local retail, minutes from the township of Berwick and easy access to Melbourne.

Boasting 4 bedrooms, the master bedroom has a full ensuite plus large walk-in robe. The remaining bedrooms will easily accommodate double beds, and all have built-in robes. The kitchen features a large walk-in pantry, Ceaser stone bench tops, twin tub stainless steel sink plus commercial quality 900mm stainless steel Technika cook-top and oven plus dishwasher and exhaust canopy. Adjoining the kitchen is an open plan living/dining area, as well as a separate theatre room.



Disclaimer: All information contained therein is gathered from relevant third parties sources. We cannot guarantee or give any warranty about the information provided. Interested parties must rely solely on their own enquiries.



For Lease
Please Call

View
ljhooker.com.au/47XEZFHE

Contact
Brooke Foster
brooke.foster@ljhcasey.com.au

LJ Hooker Hampton Park
(03) 9702 8388

Additional features include:

- Ducted heating
- Evaporative cooling
- Separate family bathroom
- Quality window furnishings
- Floating floorboards
- Abundance of storage
- Remote Double Lock Up garage w/ internal access
- Alfresco area
- Low maintenance gardens
- Security doors

The Meridian Estate also offers family-friendly parks and gardens and is in close proximity to numerous shopping centres, school and childminding facilities, public transport and freeway access.

RENT PER CALENDAR MONTH = \$2,607.00

BOND = \$2,607.00

More About this Property

Property ID	47XEZFHE
Property Type	House
Land Area	400 sqm
Including	Ensuite Air Conditioning Ducted Heating Evaporative Cooling Built-in-Robes Alfresco Close to Schools Close to Shops Close to Transport Close to shop Close to transport

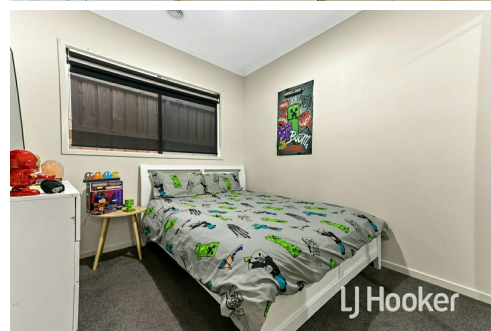
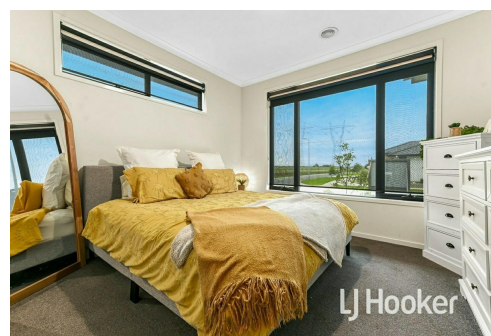
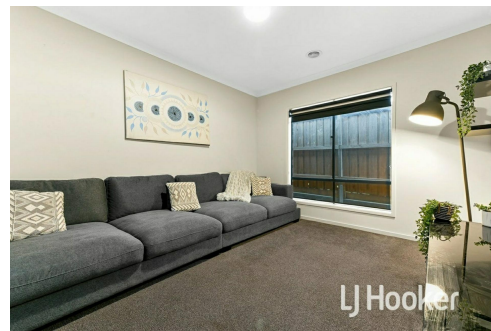
Brooke Foster

Property Manager | brooke.foster@ljhcasey.com.au

LJ Hooker Hampton Park (03) 9702 8388

Shop 20, Hampton Park Shopping Centre, 166 Somerville Road, HAMPTON PARK VIC 3976

hamptonpark.ljhooker.com.au | john.deo@ljhcasey.com.au



Disclaimer: All information contained therein is gathered from relevant third parties sources. We cannot guarantee or give any warranty about the information provided. Interested parties must rely solely on their own enquiries.

LJ Hooker Hampton Park
(03) 9702 8388