

4/26-28 Melrose Parade, Clovelly

2 🏠 1 🚗 1 🚗

Coastal Luxury Living —Light-Filled Designer Apartment Moments to Clovelly Beach

Perfectly positioned just 300 metres from Clovelly Beach, this elegantly reinvented apartment delivers a sophisticated coastal lifestyle defined by natural light, premium finishes and seamless indoor—outdoor living. Beautifully renovated throughout with meticulous attention to detail, this residence offers an elevated level of comfort in one of the Eastern Suburbs' most coveted beachside pockets.

Set within a secure boutique building, the north-eastern aspect bathes the home in sunlight, while ocean glimpses from the balcony create an idyllic backdrop for relaxed coastal living. Stroll to Clovelly's vibrant village cafés, stunning coastal walks, Gordons Bay and waterfront parklands - all at your doorstep.

Features Include:

- Sun-drenched open-plan living flowing to a private balcony with ocean glimpses
- Newly installed double-glazed windows and doors for peace and comfort

FOR RENT

Please Call

AGENTS

Patrick Boyd (Paddy)

0404 754 465

paddy@ljhookereast.com.au

AGENCY

LJ Hooker Bondi Junction | Bondi Beach

(02) 8036 7525

All information contained therein is gathered from relevant third parties sources. We cannot guarantee or give any warranty about the information provided. Interested parties must rely solely on their own enquiries.

 **LJ Hooker**

- Elegant designer kitchen with marble finishes and Miele appliances
- Two luminous bedrooms with built-in wardrobes and ceiling fans
- Stylish contemporary bathroom with rain shower and marble-topped vanity
- Internal laundry facilities
- Premium finishes including Portugal Cork Co flooring, bespoke joinery and designer lighting
- Secure building at the rear of the block
- " Lock-up garage with internal lift access + visitor parking
- " Moments to Sea Salt Café, Clovelly Hotel, coastal walks and Clovelly Beach

This beautifully curated beachside home offers the perfect blend of luxury, light and lifestyle - a rare rental opportunity in a premier coastal setting.

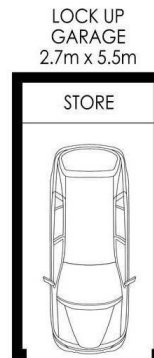
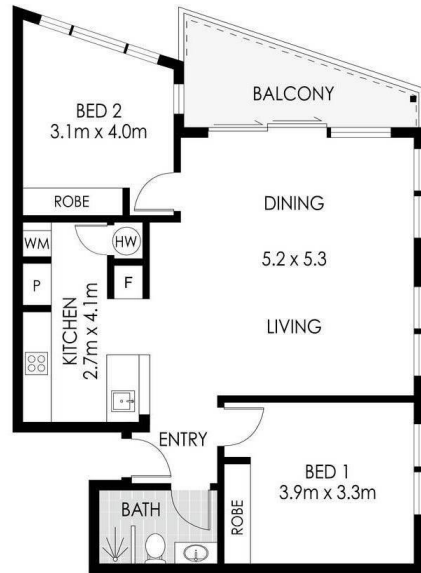
MORE DETAILS

Property ID 92JHRN
 Property Type Apartment

Patrick Boyd (Paddy) 0404 754 465
 Sales Associate | paddy@ljhookereast.com.au

LJ Hooker Bondi Junction | Bondi Beach (02) 8036 7525
 62 Spring Street, BONDJ JUNCTION NSW 2022
bondi.ljhooker.com.au | admin@ljhookereast.com.au





LEVEL ONE

BASEMENT



4/26-28 Melrose Parade, Clovelly

PLANS SHOWN ONLY INDICATIVE OF LAYOUT. DIMENSIONS ARE APPROXIMATE.
Measurements are approximate and not to scale. The vendor, agency and supplier will accept no liability for its accuracy. Interested parties are advised to make their own independent enquiries.

All information contained therein is gathered from relevant third parties sources.
We cannot guarantee or give any warranty about the information provided.
Interested parties must rely solely on their own enquiries.