

Clontarf, 63 Cutler Road

DEPOSIT PAID - Front Row Harbour Views —3-Bedroom Coastal Retreat

From the moment you walk in, you're hit with jaw-dropping, uninterrupted views over Chinaman's Beach and Balmoral, stretching across Middle Harbour all the way to South Head. It's the kind of view you'll never get tired of-morning coffees and sunset wines have never looked so good.

This beautifully positioned home offers serious potential to elevate and personalise one of the harbour's most exclusive addresses.

Tucked away beside Castlerock Reserve, you've got direct access to the Manly-Spit Walk right from your doorstep. Think peaceful bush trails, secret beaches, and ocean dips before work.

The details:



Disclaimer: All information contained therein is gathered from relevant third parties sources. We cannot guarantee or give any warranty about the information provided. Interested parties must rely solely on their own enquiries.

3

1

0

For Lease
Please Call

View
ljhooker.com.au/1985F78

Contact
Shanelle Dervish
0435 899 906
sdervish.seaforth@ljh.com.au

Tim Wirth
0421 997 845
tim@ljhseaforth.com.au

LJ Hooker Seaforth
(02) 9948 7080

Air conditioning in the living area + master bedroom

"Better than Netflix" harbour views

Sun-drenched, north-facing front garden

Approx. 600sqm block

Private bush path to Castle Rock Beach

Easy stroll to buses for the City, Manly + local schools

To arrange a private inspection, please contact me on 0435 899 906

More About this Property

Property ID	1985F78
Property Type	House
Land Area	601 sqm

Shanelle Dervish 0435 899 906

| sdervish.seaforth@ljh.com.au

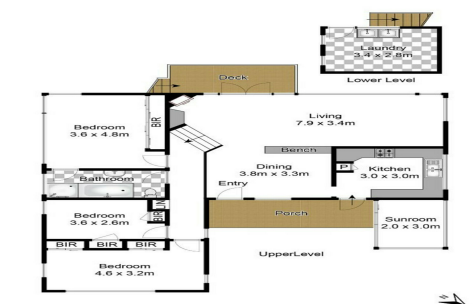
Tim Wirth 0421 997 845

Principal | tim@ljhseaforth.com.au

LJ Hooker Seaforth (02) 9948 7080

553 Sydney Road, SEAFORTH NSW 2092

seaforth.ljhooker.com.au | seaforth@ljhseaforth.com.au



LJ Hooker Seaforth
(02) 9948 7080

Disclaimer: All information contained therein is gathered from relevant third parties sources. We cannot guarantee or give any warranty about the information provided. Interested parties must rely solely on their own enquiries.