
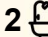
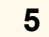




72 Wandeen Road, Clareville

5  2  5 

## North-Facing Entertainer with Breathtaking Lion Island Outlook

Designed to capitalise on postcard-perfect views right up to Lion Island, this family entertainer defines an effortless Pittwater lifestyle. Welcome to 72 Wandeen Rd, Clareville, an address that epitomises exclusivity and luxury. Nestled in one of the most sought-after enclaves, this remarkable 5 bedroom property offers an unparalleled lifestyle with expansive, uninterrupted views of serene Pittwater from nearly every room.

This residence boasts two separate living areas, each complete with its own kitchen, living, and dining space-perfect for multi-generational living or hosting guests with the utmost privacy. The top balcony presents a sweeping northern panorama of Pittwater, making it an ideal spot for morning coffee or evening sunsets.

Features include:

- Available furnished or unfurnished for a 3–12 month lease
- Five spacious bedrooms, including master with walk-in wardrobe
- Two well-appointed bathrooms
- Two separate living zones with individual kitchens, living and dining areas
- Ideal layout for multi-generational living or guest accommodation

**FOR RENT**  
\$2,200 pw

**VIEW**  
By Appointment

**AGENTS**  
Jack Davies  
0424 160 211  
jdavies@ljhnewport.com.au

**AGENCY**  
LJ Hooker Newport  
(02) 9979 1111

All information contained therein is gathered from relevant third parties sources.  
We cannot guarantee or give any warranty about the information provided.  
Interested parties must rely solely on their own enquiries.

 **LJ Hooker**

- Expansive north-west facing aspect with abundant natural light
- Sweeping Pittwater views extending to Lion Island
- Large entertaining deck overlooking Pittwater
- Built-in swimming pool with stunning water backdrop
- Large upper-level balcony capturing panoramic northern views
- Near level two-car garage with level access into the home
- Backs directly onto tranquil bushland reserve
- Approximately 10-minute walk to Clareville Beach Reserve
- Peaceful and prestigious Clareville location
- Exceptional indoor-outdoor flow ideal for entertaining
- Offered in one of Clareville's most exclusive enclaves

**Disclaimer:**

All information contained herewith, including but not limited to the general property description, price and the address, is provided to LJ Hooker Newport by third parties. We have obtained this information from sources we believe to be reliable; however, we cannot guarantee its accuracy. The information contained herewith should not be relied upon and you should make your own enquiries and seek advice in respect of this property or any property on this website.

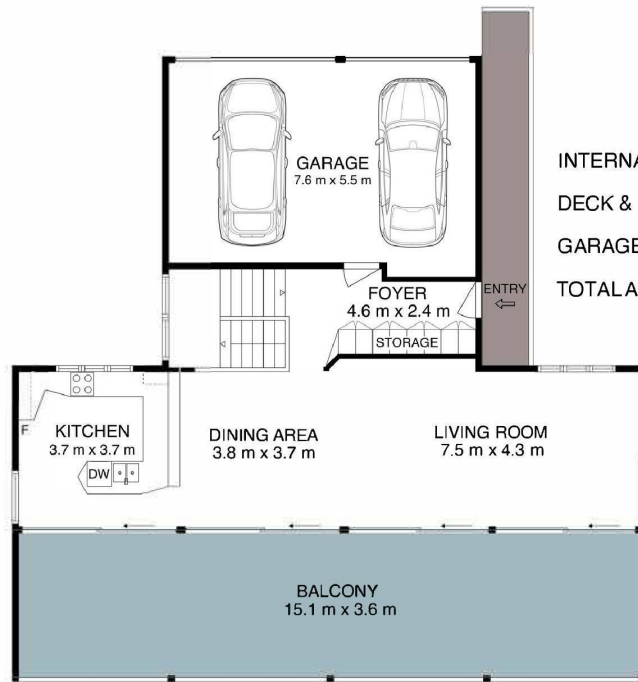
**MORE DETAILS**

Property ID                   1B32G5W  
 Property Type               House

**Jack Davies 0424 160 211**  
 Senior Property Manager | [jdavies@ljhnewport.com.au](mailto:jdavies@ljhnewport.com.au)

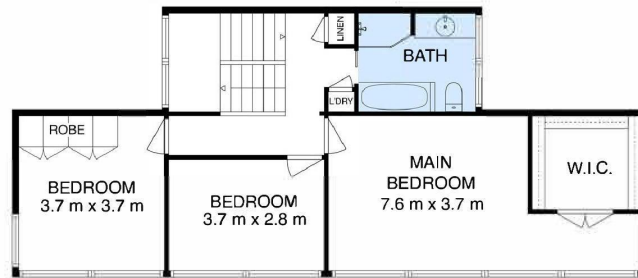
**LJ Hooker Newport (02) 9979 1111**  
 303 Barrenjoey Road, NEWPORT NSW 2106  
[newport.ljhooker.com.au](http://newport.ljhooker.com.au) | [newport@ljhnewport.com.au](mailto:newport@ljhnewport.com.au)



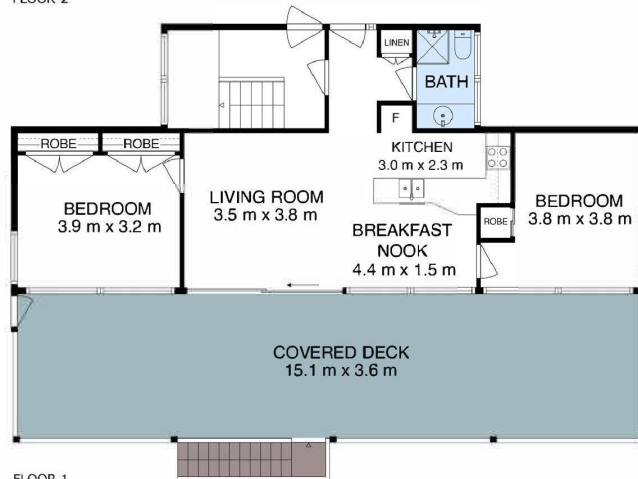


INTERNAL AREA (APROX): 220 m<sup>2</sup>  
DECK & BALCONY AREA (APROX): 120 m<sup>2</sup>  
GARAGE (APROX): 40 m<sup>2</sup>  
TOTAL AREA (APROX): 695 SQM

FLOOR 3



FLOOR 2



FLOOR 1

# 72 Wandeen Road, Clareville

Disclaimer: Floor plans and site plans are intended as a guide and are not part of any legal document or title and are subject to errors, omissions, and inaccuracies and should not be used as a reference. Dimensions are approximate only. Interested parties should make their own enquiries.