

Chippendale, 2302/18 Park Lane

Modern Inner city Living

Perched high in the near new "The Mark" complex in Central Park precinct, this stylish 2 bedroom apartment offers:

- * Expansive living and dining with porcelain tiles throughout;
- * Floor to ceiling glass offering views over city skyline;
- * Gourmet kitchen with gas European appliances;
- * Generous bedrooms with built-in robe
- * Deluxe bathrooms with quality fittings;
- * Secure car parking
- * Access to a fully equipped gymnasium, outdoor pool, expansive tree lined park;
- * All retail outlets, a Woolworths, cafes and restaurants including Din Tai Fung all at your doorsteps

3

2

2

For Lease
Please Call

View
ljhooker.com.au/S84GNZ

Contact
Mario Nucifora
0466 108 990
mario.nucifora@ljhooker.com.au



Disclaimer: All information contained therein is gathered from relevant third parties sources. We cannot guarantee or give any warranty about the information provided. Interested parties must rely solely on their own enquiries.

LJ Hooker Pyrmont
(02) 9660 8933

More About this Property

| | |
|---------------|--------|
| Property ID | S84GNZ |
| Property Type | Unit |

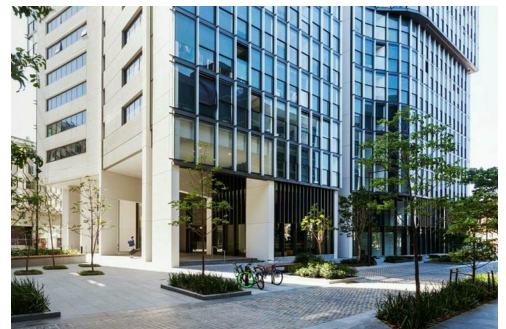
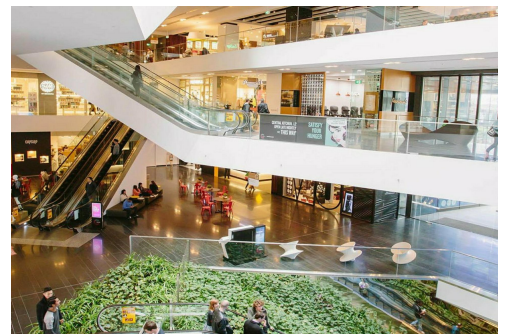
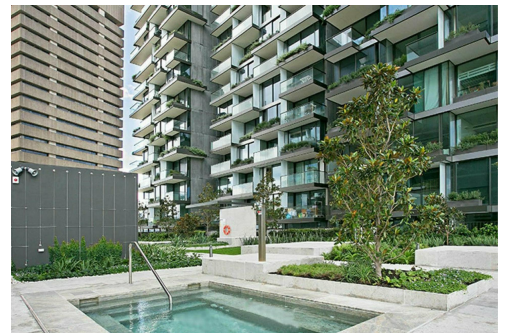
Mario Nucifora 0466 108 990

Property Investment Manager | mario.nucifora@ljhooker.com.au

LJ Hooker Pyrmont (02) 9660 8933

461 Harris Street, ULTIMO NSW 2007

pyrmont@ljhooker.com.au | pyrmont@ljhooker.com.au



LJ Hooker Pyrmont
(02) 9660 8933

Disclaimer: All information contained therein is gathered from relevant third parties sources.
We cannot guarantee or give any warranty about the information provided. Interested parties must rely solely on their own enquiries.