

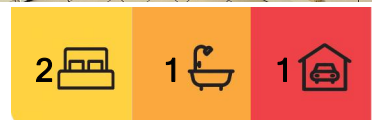


Charlestown, 2/8 Dudley Road

2 bedroom villa in walking distance to Charlestown Square

This two bedroom villa offers a central location only moments from the popular Charlestown square and a short drive from Newcastle CBD.

- This 2 bedroom villa features good size bedrooms with built-ins
- An open plan kitchen and lounge room area
- Bathroom with bathtub
- New carpet
- Single lock up garage with internal access
- Enclosed yard



For Lease
Please Call

View
ljhooker.com.au/16CZF5E

Contact
Madison Battams
0439 535 332
Madison@ljhookerbelmont.com.au
Melanie Hodge
0484 844 477
melanie@ljhookerbelmont.com.au



Disclaimer: All information contained therein is gathered from relevant third parties sources. We cannot guarantee or give any warranty about the information provided. Interested parties must rely solely on their own enquiries.

LJ Hooker Belmont
(02) 4945 8600

- Includes water usage

Don't miss the opportunity for this property! Contact us today to schedule a viewing and experience the perfect blend of comfort, style, and convenience.

This information has been prepared to assist solely in the marketing of this property. While all care has been taken to ensure the information provided herein is correct, we do not take responsibility for any inaccuracies. Accordingly, all interested parties should make their own enquiries to verify the information.

More About this Property

Property ID	16CZF5E
Property Type	Unit
Including	Built-in-Robes Fully Fenced

Madison Battams 0439 535 332

Property Officer | Madison@ljhookerbelmont.com.au

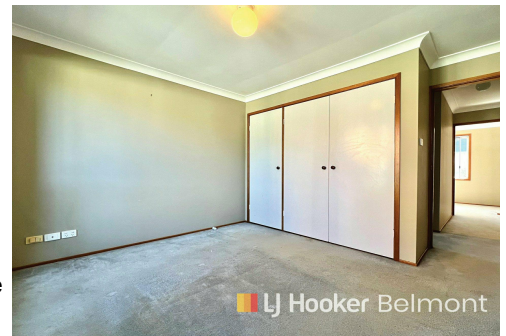
Melanie Hodge 0484 844 477

Team Leader of Property Management | melanie@ljhookerbelmont.com.au

LJ Hooker Belmont (02) 4945 8600

562 Pacific Highway, BELMONT NSW 2280

belmontnsw.ljhooker.com.au | office@ljhookerbelmont.com.au



LJ Hooker Belmont
(02) 4945 8600

Disclaimer: All information contained therein is gathered from relevant third parties sources. We cannot guarantee or give any warranty about the information provided. Interested parties must rely solely on their own enquiries.