

## Casula, 12 Nettletree Place

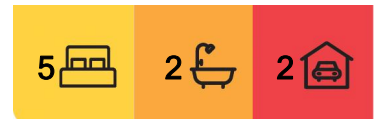
### Large Family Home

This large home is located in the most sought after location in Casula.

Some of its features include:

- Lounge, dining & family area
- 4 good sized bedrooms with built in robes & ceiling fans
- Downstairs 5th bedroom or study
- Main bedroom with ensuite & walk in robe
- Upstairs rumps room
- Tiles downstairs & timber flooring upstairs
- Large back yard with pergola
- Air conditioning & remote garage

Located within a few minutes to Crossroads Homemaker Centre, Casula Mall &



#### For Lease

Please Call

#### View

[ljhooker.com.au/YWFGRH](http://ljhooker.com.au/YWFGRH)

#### Contact

**Alen Toma**

0405 157 651

[atoma.casula@ljhooker.com.au](mailto:atoma.casula@ljhooker.com.au)

**LJ Hooker Casula**  
**(02) 9601 8333**

**Disclaimer:** All information contained therein is gathered from relevant third parties sources. We cannot guarantee or give any warranty about the information provided. Interested parties must rely solely on their own enquiries.

## More About this Property

<b>Property ID</b>	YWFGRH
<b>Property Type</b>	House
<b>Including</b>	Ensuite Study Air Conditioning Toilets (3) Outdoor Entertaining Floorboards Built-in-Robes Secure Parking

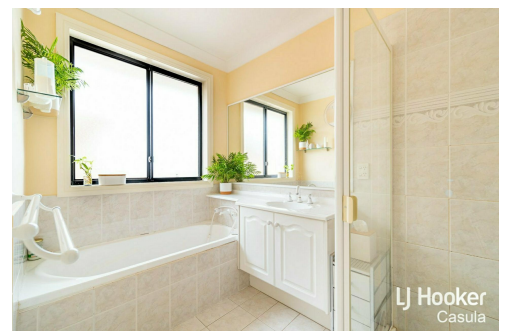
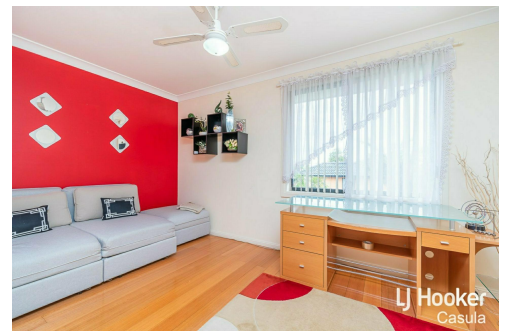
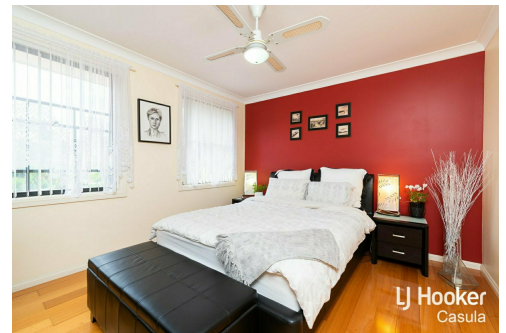
**Alen Toma 0405 157 651**

Principal | [atoma.casula@ljhooker.com.au](mailto:atoma.casula@ljhooker.com.au)

**LJ Hooker Casula (02) 9601 8333**

62 Marsh Parade, CASULA NSW 2170

[casula.ljhooker.com.au](http://casula.ljhooker.com.au) | [casula@ljhooker.com.au](mailto:casula@ljhooker.com.au)

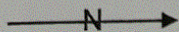




Indicative sketch plan only

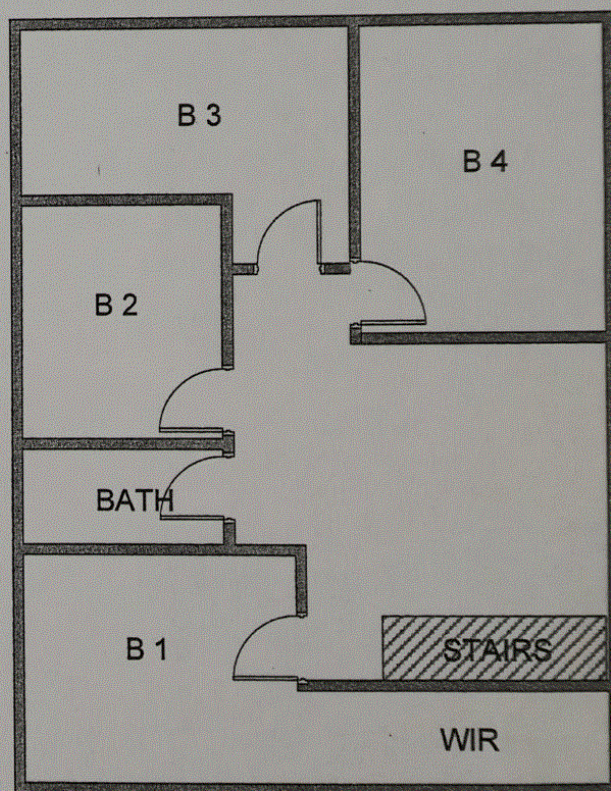
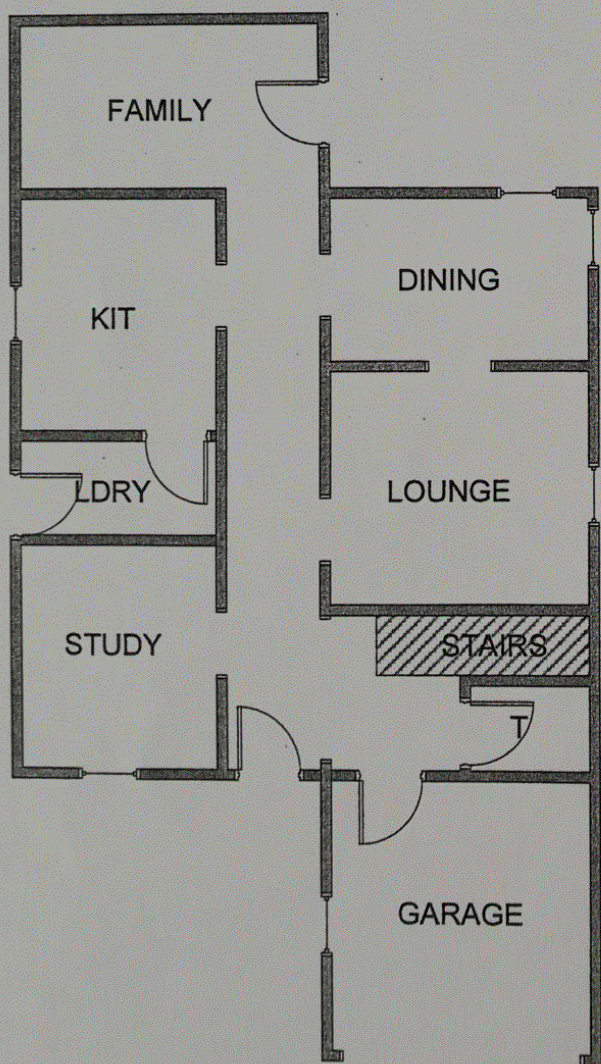
Not to Scale

Location: 12 Nettletree Place, Casula



GND  
LEVEL

TOP  
LEVEL



STREET