



## Carlisle, 114A Mars St

BE THE FIRST!

4 2 2

**For Lease**  
Please Call

**View**  
[ljhooker.com.au/5FSCFFB](https://ljhooker.com.au/5FSCFFB)

Set in a sought-after street, this brand-new architecturally designed front unit blends luxury, convenience, and modern living. Elevated and surrounded by parks, schools, transport, and shopping, everything you need is just moments away.

The spacious home features four bedrooms, two stylish bathrooms and an open-plan living area, perfect for families or professionals. The modern kitchen, with a 900mm Westinghouse gas cooktop and oven, is designed for both cooking and entertaining.

With built-in robes, reverse cycle air conditioning and an alarm system, comfort and security are guaranteed. Conveniently located near Parnham Park, schools, and shopping hubs like Westfield Carousel, this home offers easy access to Perth CBD, making it ideal for work or leisure.

Don't miss out on this rare opportunity - schedule a viewing today!



**Disclaimer:** All information contained therein is gathered from relevant third parties sources. We cannot guarantee or give any warranty about the information provided. Interested parties must rely solely on their own enquiries.

**LJ Hooker Victoria Park | Belmont  
(WA)  
(08) 9473 7777**

#### Key Features:

- \* Brand new!
- \* Reverse cycle air conditioning
- \* Alarm system
- \* Good size kitchen with ample storage
- \* Gas cooking, large oven and dishwasher
- \* Double lock-up garage

- Unfurnished
- 6 or 12 months initial lease term

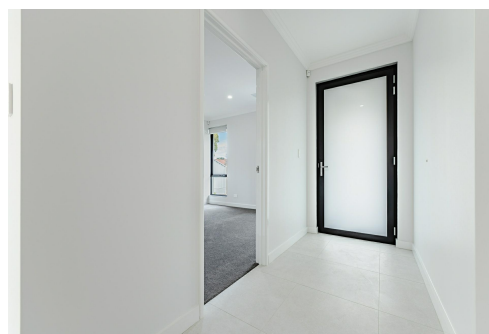
Please register your details by requesting/booking an inspection

\*\*\* ARE YOU A LANDLORD? If you are looking for property management services, we would love to hear from you. Contact our Business Development Team on 0407 722 867 or [newrentals@ljhvicpark.com.au](mailto:newrentals@ljhvicpark.com.au) for a no-obligation and confidential conversation.

## More About this Property

<b>Property ID</b>	5FSCFFB
<b>Property Type</b>	Villa
<b>Including</b>	Air Conditioning Alarm Dishwasher Built-in-Robes Secure Parking Close to Schools Close to Shops Close to Transport

**LJ Hooker Victoria Park | Belmont (WA) (08) 9473 7777**  
288 Albany Highway, VICTORIA PARK WA 6100  
[victoriapark-belmontwa.ljhooker.com.au](mailto:victoriapark-belmontwa.ljhooker.com.au) | [reception@ljhvicpark.com.au](mailto:reception@ljhvicpark.com.au)



**Disclaimer:** All information contained therein is gathered from relevant third parties sources. We cannot guarantee or give any warranty about the information provided. Interested parties must rely solely on their own enquiries.

**LJ Hooker Victoria Park | Belmont  
(WA)  
(08) 9473 7777**