

Carina Heights, 1/28 Osterley Road

LOW MAINTENANCE LIVING WITH EVERYTHING AT YOUR DOORSTEP

****Break lease – short term tenancy 6 months - end date 4/4/25****

This 3-bedroom townhouse is split over two levels and is in a small complex of only four, and located in an ultra-convenient position with both shops and public transport within walking distance.

The lower level comprises an open plan kitchen and dining area and an air-conditioned living area. The modern kitchen comprises of a crisp white design with stainless steel appliances, a dishwasher and plenty of storage space to ensure effortless meal preparation. This relaxed and comfortable space leads out to the large, covered outdoor entertaining space which is ideal for relaxed entertaining and BBQs with friends and family, or a great space for your kids to play. This area is softened and made very private with a fully fenced grassed courtyard. This level also houses the laundry and a powder room for

3

2

1

For Lease
Please Call

View
ljhooker.com.au/1E1YH31



Disclaimer: All information contained therein is gathered from relevant third parties sources. We cannot guarantee or give any warranty about the information provided. Interested parties must rely solely on their own enquiries.

**LJ Hooker Annerley | Yeronga |
Salisbury
(07) 3848 7369**

your convenience.

Three spacious bedrooms are located upstairs. The main bedroom delights in a private balcony with elevated outlooks and features a walk-in robe and en-suite. The additional 2 bedrooms are of a good size, and both have built-in robes. These bedrooms are serviced by a functional bathroom. A sizeable linen cupboard finalises this level.

The internal access from the single garage as well as security screens throughout immediately increase your sense of safety. The fresh, open and airy feel of this townhouse along with the comfort it offers makes it a property hard to resist.

With so many amenities close at hand, residents are assured a relaxed and convenient lifestyle. Featuring bus stops outside the complex, parks steps away, and the Carina Gateway shopping strip around the corner, you can walk to cafes, gyms, shops, pharmacy, post office and Chris' IGA. Less than 5 minutes to Westfield Carindale, Camp Hill Marketplace, childcare and the hiking trails of Whites Hill Reserve. Moments from the Gateway Motorway and 15 minutes from the CBD.

Features of 1/28 Osterley Road at a glance:

- Air conditioning in living area & Master bedroom
- Built-in robes in all bedrooms
- Main bedroom with en-suite, walk-in robe and private balcony.
- Well equipped kitchen with stainless steel appliances and dishwasher
- Functional bathroom with shower over bath
- Separate powder room located downstairs
- Internal laundry
- Ample storage throughout
- Single lock up garage
- Private outdoor entertaining area
- Fully fenced and grassed courtyard with water tank
- Security screens throughout
- Small complex of only 4
- Walking distance to shops and public transport
- 2-minute drive to Westfield Carindale Shopping Centre and the Clem Jones Centre

BOOK AN INSPECTION ONLINE - ITS EASY!

Click on the *Book Inspection* or *Request an Inspection* Button under the open for inspections times

*** By registering for an inspection, you will be INSTANTLY informed of any updates, changes or cancellations for your property appointment. If no one registers for an inspection time - then that inspection may not proceed. If there are no times set for this property yet, STILL REGISTER and as soon as times are set, you will be advised of the day and time ***

TO APPLY for this rental property please go direct to our website (below) or contact our office on 07 3848 7369. <https://annerleyyeronga.ljhooker.com.au/search/property-for-rent/page-1>

Disclaimer: Whilst every care is taken in the preparation of the information contained



Disclaimer: All information contained therein is gathered from relevant third parties sources. We cannot guarantee or give any warranty about the information provided. Interested parties must rely solely on their own enquiries.

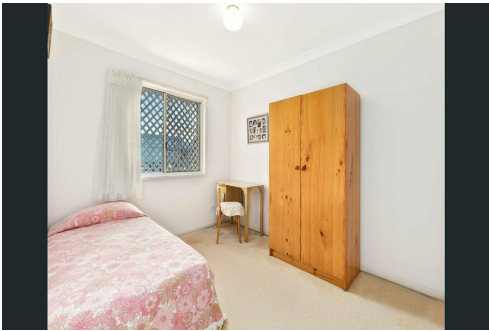
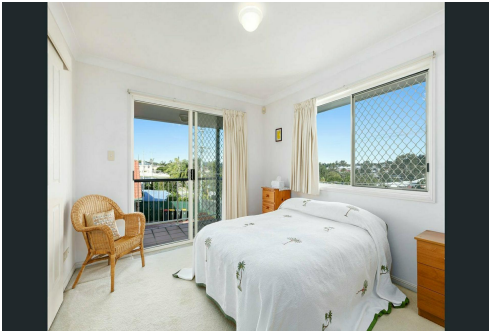
**LJ Hooker Annerley | Yeronga |
Salisbury
(07) 3848 7369**

herein, we will not be held liable for any errors in typing or information. All information is considered correct at the time of writing and any interested parties should satisfy themselves in this respect.

More About this Property

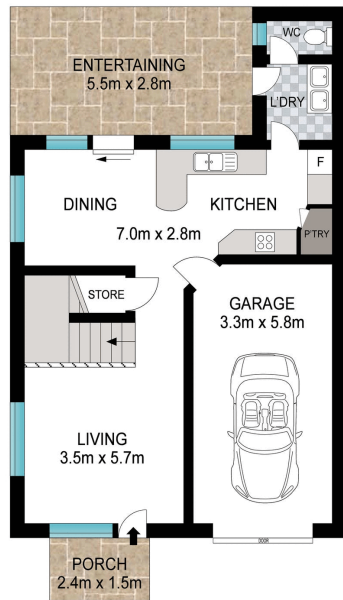
Property ID	1E1YH31
Property Type	Townhouse
Including	Ensuite Air Conditioning Courtyard Dishwasher Outdoor Entertaining Built-in-Robes Fully Fenced Remote Garage Water Tank

LJ Hooker Annerley | Yeronga | Salisbury (07) 3848 7369
443 Ipswich Road, ANNERLEY QLD 4103
annerleyyeronga.ljhooker.com.au | admin@ljhookerproperty.com.au

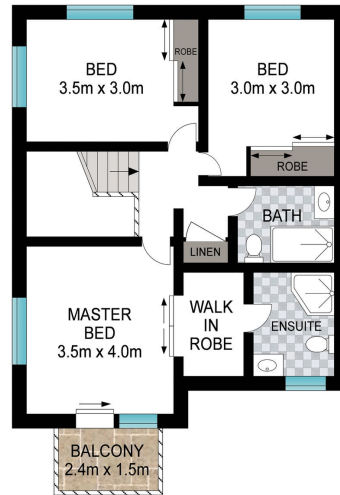


Disclaimer: All information contained therein is gathered from relevant third parties sources. We cannot guarantee or give any warranty about the information provided. Interested parties must rely solely on their own enquiries.

LJ Hooker Annerley | Yeronga | Salisbury (07) 3848 7369



GROUND LEVEL



LEVEL ONE



Scale in meters. Indicative only. Dimensions are approximate. All information contained herein is gathered from sources we believe to be reliable. However, we cannot guarantee its accuracy and interested persons should rely on their own enquiries.

INT: 135 m²
EXT: 25 m²

1/28 Osterley Road, Carina Heights