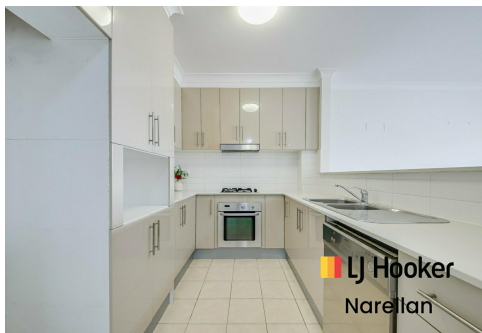
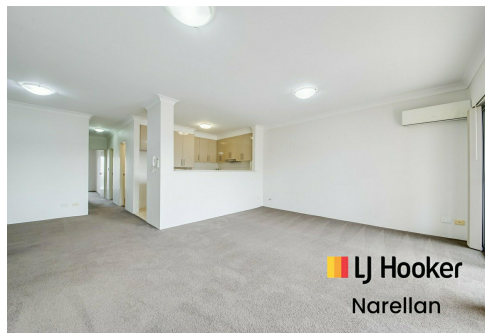




LJ Hooker
Narellan



LJ Hooker
Narellan



LJ Hooker
Narellan



Campbelltown, 32/7-9 King Street

A Modern Retreat in the Heart of Campbelltown

Step into comfort and convenience with this contemporary two-bedroom, two-bathroom apartment, complete with the added bonus of a rare oversized lock-up garage! Ideally positioned, this home offers easy access to everything the area has to offer—shops, cafes, transport, and more.

Additional Features Include:

- Oversized lock-up garage with ample storage space
- Split system A/C for year-round comfort
- Two generous sized bedrooms, both with mirrored built-in wardrobes
- Ensuite to the master, and separate bath and shower in the main bathroom
- Modern kitchen with stone benchtops, gas cooking, dishwasher, and ample storage
- Dining area off the kitchen
- Internal laundry
- Secure intercom access



Disclaimer: All information contained therein is gathered from relevant third parties sources. We cannot guarantee or give any warranty about the information provided. Interested parties must rely solely on their own enquiries.



For Lease
Please Call

View
ljhooker.com.au/1QBTFGQ

Contact
Keira Hoban
khoban.narellan@ljhooker.com.au

LJ Hooker Narellan
(02) 4625 9111

PLEASE REGISTER YOUR ENQUIRY FOR UPCOMING OPEN HOME INSPECTION. IF YOU DO NOT REGISTER WE ARE UNABLE TO ADVISE YOU IF ANY CHANGES TAKE PLACE.

DISCLAIMER

All information contained herein is gathered from sources we believe to be reliable. However, we cannot guarantee its accuracy and interested persons should rely on their own enquiries.

More About this Property

Property ID	1QBTFGQ
Property Type	Unit

Keira Hoban
| khoban.narellan@ljhooker.com.au

LJ Hooker Narellan (02) 4625 9111
5/22 Somerset Avenue, NARELLAN NSW 2567
narellan.ljhooker.com.au | narellan@ljhooker.com.au



LJ Hooker Narellan
(02) 4625 9111

Disclaimer: All information contained therein is gathered from relevant third parties sources. We cannot guarantee or give any warranty about the information provided. Interested parties must rely solely on their own enquiries.