

Campbell, UG06/4 Anzac Park

Courtyard With Street Access

From the moment you enter the front door, you are greeted with wooden flooring and light coloured schemes making this feel spacious and homely. Internally, the contemporary finishes provide The Parade with a timeless yet modern feel. Light filled spaces, expansive windows and spacious courtyard with street access make it easy to enjoy indoor and outdoor living.

The generous bedrooms, well thought out storage space and gourmet kitchen with Miele appliances, soft close drawers and marble benchtops will make you feel right at home the moment you walk in.

Features include:

- Built-in robes
- Courtyard with street access
- Dishwasher



Disclaimer: All information contained therein is gathered from relevant third parties sources. We cannot guarantee or give any warranty about the information provided. Interested parties must rely solely on their own enquiries.



For Lease
\$650 Per Week

View
By Appointment

Contact
Lagan Puri
0401 566 223
lagan.puri@ljhcanberracity.com.au

EER ★★★★★

LJ Hooker Canberra City
(02) 6249 7700

- Ducted heating and cooling
 - Wooden flooring
- No current EER

This property has a valid exemption and is not required to comply with the minimum ceiling insulation standard.

There is no embedded network.

Suburb Snapshot

Campbell is a suburb of Canberra, Australian Capital Territory, Australia. Covering an area to the South East of the central business district, Campbell sits at the base of Mount Ainslie and is bounded to the south east by the Mount Pleasant Nature Reserve. At the 2016 census, Campbell had a population of 4,997 people.

The suburb of Campbell is named after Robert Campbell, the owner of Duntroon station on which Campbell is now located. Many buildings built by Robert Campbell and his family are still standing around Canberra, including Blundell's Cottage, St John the Baptist Church, Reid, Duntroon House (now part of RMC Duntroon) and Yarralumla House (now Government House).

Located in Campbell are the Australian War Memorial, Royal Military College, Duntroon, the Australian Defence Force Academy, and the CSIRO Corporate Headquarters. Also with addresses in the suburb are the 'Ainslie Village' accommodation centre for people with special needs and the Campbell Park Offices.

Schools located in the suburb include Campbell High School, Campbell Primary School and Canberra Grammar Northside Infant School.

Disclaimer:

Please note that while all care has been taken regarding general information and marketing information compiled for this rental advertisement, LJ HOOKER CANBERRA CITY does not accept responsibility and disclaim all liabilities in regard to any errors or inaccuracies contained herein. We encourage prospective tenants to rely on their own investigation and in-person inspections to ensure this property meets their individual needs and circumstances.

PETS:

Please be aware that at all stages of tenancy this property requires consent to be sought from the lessor for the keeping of any pets at the premises. Consent must be provided before any pets are at the premises.

RENTING BOOK:

https://www.justice.act.gov.au/_data/assets/pdf_file/0008/2443472/Renting-Book-May-2024.pdf



LJ Hooker Canberra City
(02) 6249 7700

Disclaimer: All information contained therein is gathered from relevant third parties sources. We cannot guarantee or give any warranty about the information provided. Interested parties must rely solely on their own enquiries.

More About this Property

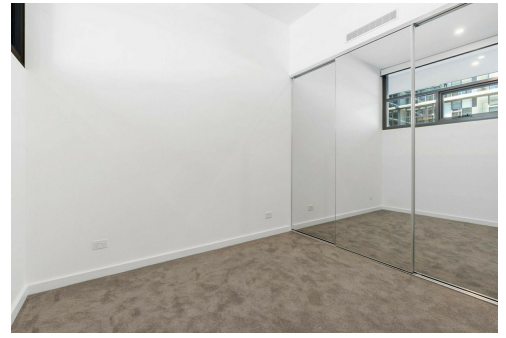
Property ID	2DQKFHK
Property Type	Apartment
Including	Intercom Courtyard Dishwasher Floorboards Built-in-Robes

Lagan Puri 0401 566 223

Senior Property Investment Manager | lagan.puri@ljhcanberracity.com.au

LJ Hooker Canberra City (02) 6249 7700

1st Floor, 182 - 200 City Walk, CANBERRA CITY ACT 2601
canberracity.ljhooker.com.au | canberracity@ljhooker.com.au



LJ Hooker Canberra City
(02) 6249 7700

Disclaimer: All information contained therein is gathered from relevant third parties sources. We cannot guarantee or give any warranty about the information provided. Interested parties must rely solely on their own enquiries.