

Butler, 1 Swavesey Avenue

Spacious 4x2, ducted reverse cycle a/c



4 bedroom, 2 bathroom, family entertainer in a handy location.

Property Features:

- Double door entry with security doors.
- Open plan kitchen/meals living
- Dishwasher
- Generous size theatre room.
- 2 Living areas.
- High ceilings to living area
- 4 spacious bedrooms
- Huge master bedroom with separate built-in robes.
- 2nd/3rd/4th bedrooms are generous in size with built-in robes.
- En-suite bathroom, with double vanity.
- Family bathroom suite.

For Lease

\$730 wk

View

By Appointment

Contact

Lee-Ann Ramsay

0466 281 133

pm4.joondalup@ljhooker.com.au



LJ Hooker Joondalup
(08) 9300 2100

Disclaimer: All information contained therein is gathered from relevant third parties sources. We cannot guarantee or give any warranty about the information provided. Interested parties must rely solely on their own enquiries.

Separate 2nd toilet.
Ducted reverse cycle air-conditioning.
Walk in linen.
Large laundry.
Auto reticulation.
Pitched patio entertaining.
Secure back yard
Elevated block.
Double auto garage.

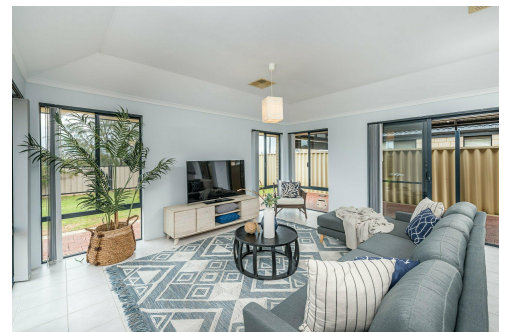
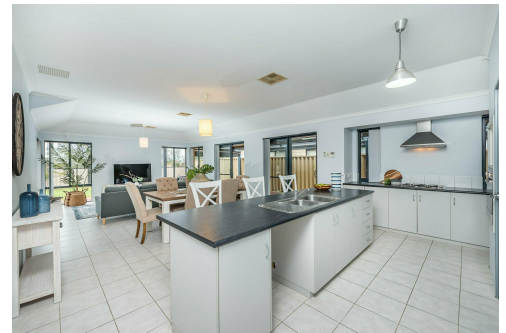
Private High & Primary schools are minutes away.
Close to Shops, Parks, Public transport, Butler train station and access to freeway.

More About this Property

Property ID	K4PHRD
Property Type	House
Including	Ensuite Air Conditioning Toilets (2) Built-in-Robes Secure Parking Fully Fenced Remote Garage

Lee-Ann Ramsay 0466 281 133
Senior Property Manager | pm4.joondalup@ljhooker.com.au

LJ Hooker Joondalup (08) 9300 2100
4/25 Delage Street, JOONDALUP WA 6027
joondalup.ljhooker.com.au | admin.joondalup@ljhooker.com.au



Disclaimer: All information contained therein is gathered from relevant third parties sources.
We cannot guarantee or give any warranty about the information provided. Interested parties must rely solely on their own enquiries.

LJ Hooker Joondalup
(08) 9300 2100