

## Bull Creek, 1/1 Wheatley Drive

### QUALITY LIVING

Nestled in a small group of 4 villas, this street front-facing villa is stylishly designed with an open-plan layout offering low-maintenance living in a central convenient location.

Light-filled and spacious, the open-plan living and dining area features bi-fold doors that open onto the spacious undercover patio, perfect for entertainment with family and friends in any season.

The living, dining, and kitchen areas all feature hardwood flooring. The kitchen has been renovated with a tiled splashback, plenty of benchtop space, cupboards, and drawers for storage.

The main bedroom and two minor bedrooms are generous in size, each



**Disclaimer:** All information contained therein is gathered from relevant third parties sources. We cannot guarantee or give any warranty about the information provided. Interested parties must rely solely on their own enquiries.

3 1 1

**For Lease**

Please Call

**View**

[ljhooker.com.au/5E6GFFB](http://ljhooker.com.au/5E6GFFB)

**LJ Hooker Victoria Park | Belmont (WA)**  
**(08) 9473 7777**

bedroom features its own built-in robe and ceiling fan.

#### Key Features:

- \* Hardwood flooring in living, dining, and kitchen areas
- \* 4 gas burners cooktop with fan-forced oven
- \* Dishwasher
- \* Ceiling fans in all the bedrooms
- \* Spacious and renovated bathroom
- \* Split system air conditioning in the living/dining area
- \* Expansive undercover patio with two ceiling fans and pendant lighting
- \* Retractable outdoor blinds on the west and south sides of the patio
- \* Garden shed
- \* Undercover storage area
- \* Undercover single carport and second open car bay
- \* NBN

- Sorry, no pets
- Unfurnished
- 12 months lease term

Would you like to inspect this property? Please register your details by requesting/booking an inspection. You will be sent details of available viewing times or be notified as soon as a time becomes available.

You must book/register for a specific viewing time, otherwise, we will not be able to contact you should the viewing be cancelled, or the time changed.

Alternatively, call our office on 08 9473 7777.

\*\*\* ARE YOU A LANDLORD? If you are looking for property management services, we would love to hear from you. Contact our Business Development Manager Barry on 0407 722 867 or [barry@ljhvicpark.com.au](mailto:barry@ljhvicpark.com.au) for a no-obligation and confidential conversation.

## More About this Property

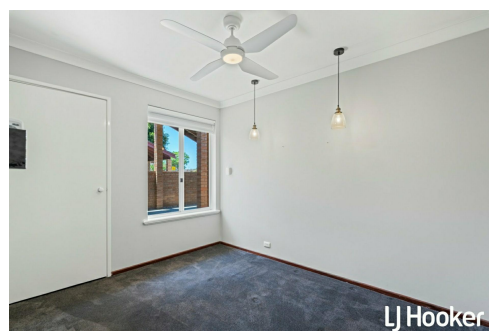
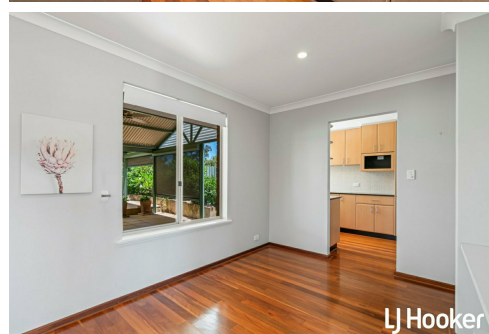
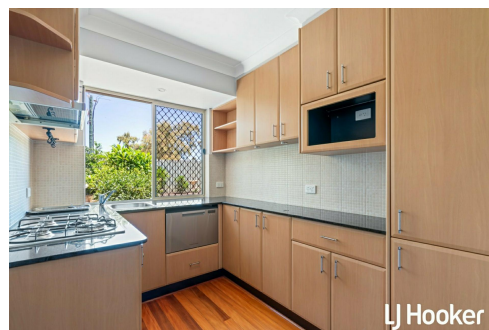
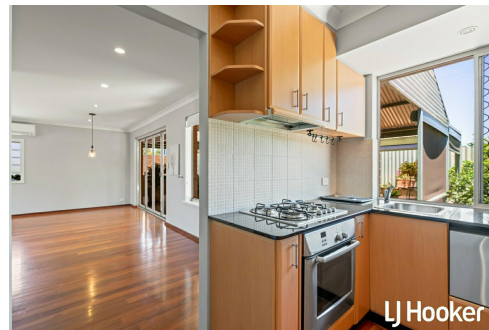
**Property ID** 5E6GFFB

**Property Type** Villa

### LJ Hooker Victoria Park | Belmont (WA) (08) 9473 7777

288 Albany Highway, VICTORIA PARK WA 6100

[victoriapark-belmontwa.ljhooker.com.au](mailto:victoriapark-belmontwa.ljhooker.com.au) | [reception@ljhvicpark.com.au](mailto:reception@ljhvicpark.com.au)



**Disclaimer:** All information contained therein is gathered from relevant third parties sources. We cannot guarantee or give any warranty about the information provided. Interested parties must rely solely on their own enquiries.

**LJ Hooker Victoria Park | Belmont  
(WA)  
(08) 9473 7777**