

Bull Creek, 8 Pearson Crescent

ALL THE EXTRAS IN A TOP SCHOOL LOCATION

5 2 2 1

For Lease
Please Call

View
ljhooker.com.au/5ERTFFB

Don't let the front facade fool you. Once you step in past the mudroom complete with small pond you will realise the space, layout and accessories will meet your every desire. 2 separate living areas the second adjoining the large open kitchen with dishwasher. The fifth bedroom could also be used as a separate theatre/ games or activity room. The large master room complete with ensuite. The second bathroom with spa bath. You will be extremely happy with the size of all of the bedrooms. Add to this ducted reverse cycle air conditioning, an alarm and dishwasher I can't think of anything that is missing. Then outside there is a large secure garage, solar panels, swimming pool and large private patio for your outdoor living.

The location can't be faulted. Walk to Oberthur Primary school. In the Willetton High school catchment a short distance to Parry street shopping strip with Southlands, Bull Creek and Riverton shops all within close distance. Public transport to Bull Creek train station plus South Street and Leach Highway will get you in and around the city with ease.



Disclaimer: All information contained therein is gathered from relevant third parties sources. We cannot guarantee or give any warranty about the information provided. Interested parties must rely solely on their own enquiries.

**LJ Hooker Victoria Park | Belmont
(WA)
(08) 9473 7777**

Key Features:

- * Ducted reverse cycle air conditioning throughout
- * Alarm
- * Multiple living spaces
- * Awesome school zones
- * Multiple shopping centers within easy reach
- * Solar panels save you money
- * Swimming pool waiting for you for summer

- Outside pets considered
- Unfurnished
- 6 or 12 months initial lease term

Please register your details by requesting/booking an inspection

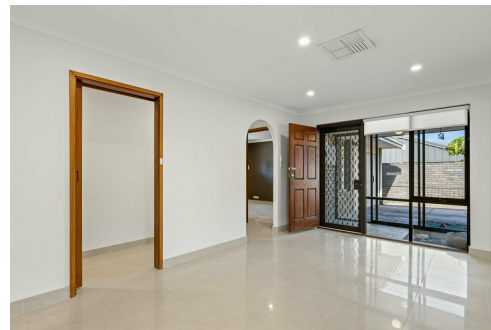
*** ARE YOU A LANDLORD? If you are looking for property management services, we would love to hear from you. Contact our Business Development Manager Barry on 0407 722 867 or barry@ljhvicpark.com.au for a no-obligation and confidential conversation.

More About this Property

Property ID	5ERTFFB
Property Type	House
Including	Ensuite Ducted Cooling Ducted Heating Alarm Pool Spa Dishwasher Built-in-Robes Secure Parking Remote Garage Solar Panels Close to Schools Close to Shops Close to Transport

LJ Hooker Victoria Park | Belmont (WA) (08) 9473 7777

288 Albany Highway, VICTORIA PARK WA 6100
victoriapark-belmontwa.ljhooker.com.au | reception@ljhvicpark.com.au



Disclaimer: All information contained therein is gathered from relevant third parties sources. We cannot guarantee or give any warranty about the information provided. Interested parties must rely solely on their own enquiries.

**LJ Hooker Victoria Park | Belmont
(WA)
(08) 9473 7777**