



Brooklyn Park, 12 Clifford Street

Charm and Convenience Await at 12 Clifford Street, Brooklyn Park!



For Lease
\$600 per week

View
By Appointment

Contact
Russell Payne
russell@ljhfp.com.au

INSPECTION TIMES- To inspect this property please click the "Request a Time" Or "Book an Inspection" button below. You will be notified of future inspections times and updates. Once registration has been completed you will be sent an email with instructions on how to apply. PRE APPLICANTS WELCOME BUT APPLICATIONS WONT BE PROCESSED UNTIL THE PROPERTY HAS BEEN VIEWED

This charming two-bedroom home at 12 Clifford Street, Brooklyn Park, offers a comfortable and convenient lifestyle. Close to Adelaide's best beaches and amenities, the location is ideal!

Features:

-Two Bedrooms: Both bedrooms are a good size and feature polished timber floorboards.



LJ Hooker Flinders Park
(08) 8352 1155

Disclaimer: All information contained therein is gathered from relevant third parties sources. We cannot guarantee or give any warranty about the information provided. Interested parties must rely solely on their own enquiries.

- Spacious Lounge and Dining: Enjoy a generous living area and a separate dining space for family meals.
- Modern Kitchen: The modern kitchen is well-equipped with electric appliances.
- Bathroom and Laundry: The home includes a separate bathroom with a shower and a dedicated laundry room.
- Heating and Cooling: A split-system air conditioner ensure year-round comfort.
- Outdoor Space: The property boasts a carport, garden shed, and a veranda for outdoor enjoyment.

Brooklyn Park is a highly sought-after suburb known for its proximity to the city and the coast. The area offers a range of amenities, including local shops, cafes, and parks. It's a short drive to the popular Harbour Town Adelaide and is well-served by public transport, making it a great location for commuters.

School Catchment Zones:

[\[https://www.education.sa.gov.au/parents-and-families/enrol-school-or-preschool/find-a-school-zone-or-preschool-catchment-area\]](https://www.education.sa.gov.au/parents-and-families/enrol-school-or-preschool/find-a-school-zone-or-preschool-catchment-area)[\]\(https://www.education.sa.gov.au/parents-and-families/enrol-school-or-preschool/find-a-school-zone-or-preschool-catchment-area\)](https://www.education.sa.gov.au/parents-and-families/enrol-school-or-preschool/find-a-school-zone-or-preschool-catchment-area)

(We take no responsibility for the information given by the school zone locator and you should always make your own inquiries with the school directly)

12 month lease

Tenant to maintain front and back yard

Water use and supply charges apply to the tenant

Alicia Jones

Property Manager

LJ Hooker Flinders Park

Alicia@ljhfp.com.au

RLA 215339

More About this Property

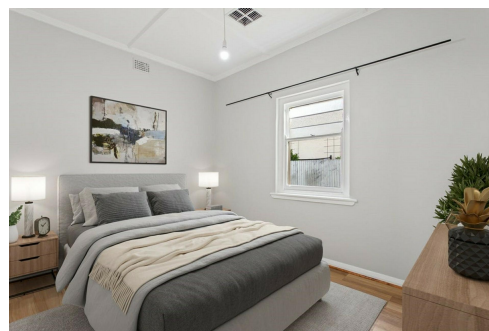
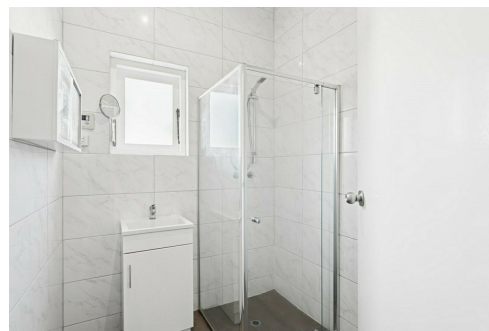
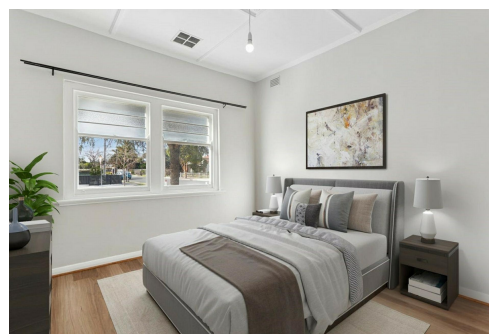
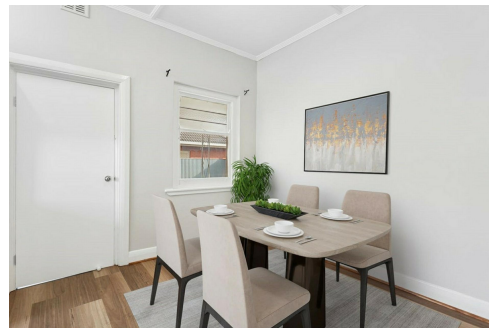
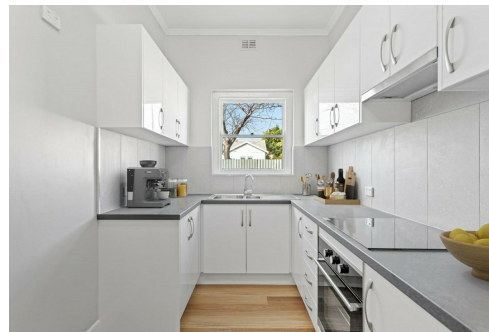
Property ID	JCHH67
Property Type	House
Including	Toilets (1)

Russell Payne

Department Manager - Property Management | russell@ljhfp.com.au

LJ Hooker Flinders Park (08) 8352 1155

Suite 2/166-168 Grange Road, FLINDERS PARK SA 5025
flinderspark.ljhooker.com.au | flinderspark@ljhfp.com.au



**LJ Hooker Flinders Park
(08) 8352 1155**

Disclaimer: All information contained therein is gathered from relevant third parties sources. We cannot guarantee or give any warranty about the information provided. Interested parties must rely solely on their own enquiries.