



Bridgeman Downs, 20 Habitat Place

Pool, Solar with Battery Storage, Fully Air Conditioned

5 2 5 1

Nestled in the sought-after suburb of Bridgeman Downs, this spacious five-bedroom house offers an ideal family retreat with a blend of comfort and convenience. The home features a seamless floor plan that includes multiple living areas, perfect for both relaxation and entertainment. The inviting fireplace sets the scene for cozy winter nights, while the expansive deck and outdoor entertaining options provide a picturesque setting for summer gatherings. With a solar panel and battery storage system in place, this home is not only stylish but also energy-efficient.

Features Include;

- * Five bedrooms with wardrobes and air conditioning plus over height ceilings
- * Ensuite to main bedroom, family bathroom and powder room
- * Massive open plan living upstairs with cathedral ceilings, wood burning fire place and air conditioning offering more than enough space for multiple living and dining options
- * Spacious kitchen with walk in pantry and oodles of bench and storage space



Disclaimer: All information contained therein is gathered from relevant third parties sources. We cannot guarantee or give any warranty about the information provided. Interested parties must rely solely on their own enquiries.

For Lease
Please Call

View
ljhooker.com.au/3AJGF1R

Contact
Bella Garside
office.aspley@ljhooker.com.au

LJ Hooker Aspley | Chermide
(07) 3263 6022

- * Large rumpus room downstairs with air conditioning
- * In ground pool
- * Oversized hall spaces that have previously been used as a study nook and library
- * Two large outdoor areas with lower paved patio overlooking the pool and massive upper balcony
- * Fully fenced yard perfect for kids and pets
- * Gym with professional quality rubber floor matting, air conditioning and fan
- * Workshop space with built in storage, running water and air conditioning
- * Oversized double garage with remote access and built in storage
- * Large laundry with built in storage options
- * Large solar system with battery storage
- * Side car access perfect for keeping trailers or additional vehicles off the street, plus driveway parking for an additional three vehicles in front of the garage
- * Small garden shed perfect for gardening equipment

Bridgeman Downs is renowned for its family-friendly atmosphere, boasting excellent local schools and parks. This property is located just a short drive from the bustling shopping precincts and dining options that cater to every taste. With easy access to public transport, commuting to Brisbane's CBD is convenient and hassle-free. Families will appreciate the proximity to several quality schools, including Aspley State School and St. Paul's School, ensuring educational needs are well catered for.

Would you like to view this property?

Go directly to <https://aspley.ljhooker.com.au> to register to inspect.

PLEASE NOTE, if you do not register online, we cannot notify you of any time changes or cancellations to inspections.

To apply please submit an online application via 2Apply at the following website - <https://www.2apply.com.au/login>

Alternatively, you can download and print our application by visiting our website - <https://aspley.ljhooker.com.au/renting/tenancy-application-form>

All information contained herein is gathered from sources we consider to be reliable. However, we cannot guarantee or give any warranty about the information provided. Interested parties must solely rely on their own enquiries.



LJ Hooker Aspley | Chermside
(07) 3263 6022

Disclaimer: All information contained therein is gathered from relevant third parties sources. We cannot guarantee or give any warranty about the information provided. Interested parties must rely solely on their own enquiries.

More About this Property

Property ID	3AJGF1R
Property Type	House
Including	Ensuite Air Conditioning Toilets (3) Pool Fire Place Balcony Deck Dishwasher Outdoor Entertaining Workshop Built-in-Robes Secure Parking Fully Fenced Remote Garage Solar Panels

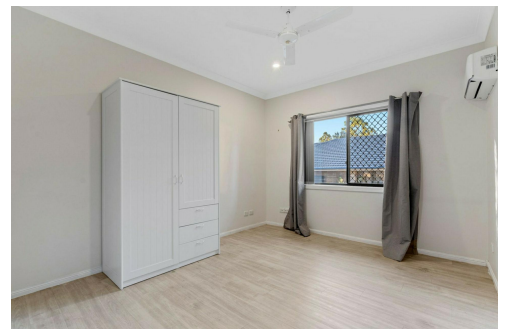
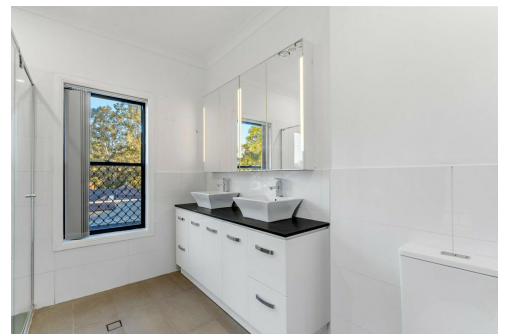
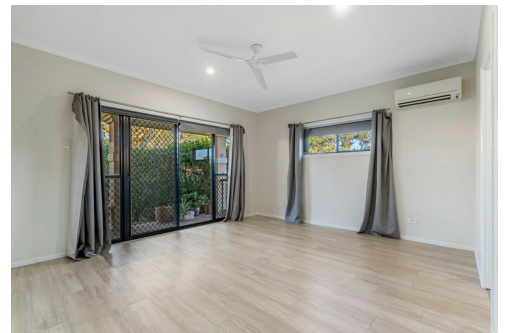
Bella Garside

Receptionist | office.aspley@ljhooker.com.au

LJ Hooker Aspley | Chermside (07) 3263 6022

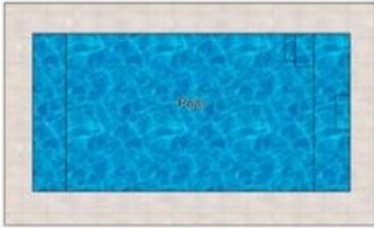
1359 Gympie Road, ASPLEY QLD 4034

aspley.ljhooker.com.au | aspley@ljhooker.com.au



**LJ Hooker Aspley | Chermside
(07) 3263 6022**

Disclaimer: All information contained therein is gathered from relevant third parties sources. We cannot guarantee or give any warranty about the information provided. Interested parties must rely solely on their own enquiries.



20 Habitat Place, Bridgeman Downs

Internal : 390 sqm
External : 72 sqm
Total Area : 462 sqm