



Braddon, 18/90 Lowanna Street

Living the Life at Artisan

Artisan is an exclusive residential development consisting of high-end executive apartments. These are designed with an emphasis on sophistication and understated style, its European design compliments the beautiful leafy suburb.

Inside is a generous sized living room with mountain views, flowing out onto a spacious private balcony. Larger bedrooms with robes and high ceilings all contribute to a sense of space. Classic textures with clean, modern colour palettes to create a platform for timeless elegance throughout.

Well-appointed kitchen with stone bench tops, generous work spaces and storage. This beautiful apartment maximising both form and function, it redefines luxury living. Spacious balcony overseeing the beautiful views, including views of Mt Ainslie.

Easy walking distance to the popular Lonsdale Street in Braddon, the City Centre, light rail,



Disclaimer: All information contained therein is gathered from relevant third parties sources. We cannot guarantee or give any warranty about the information provided. Interested parties must rely solely on their own enquiries.

2

2

1

For Lease
Please Call

View
ljhooker.com.au/2C8HFHK

Contact
Grace Bowman
0472 759 453
grace.bowman@ljhcanberracity.com.au

EER ★★★★★

LJ Hooker Canberra City
(02) 6249 7700

Australian National University and more.

Features include:

- Built-in microwave and dishwasher
- Fisher and Paykel washing machine and dryer included
- Dishwasher
- Premium interior fixtures and fittings
- Fantastic storage throughout
- One underground car space with storage facility

No current EER

This property has a valid exemption and is not required to comply with the minimum ceiling insulation standard.

This property is awaiting an insulation information from the Owners Corporation

Suburb Snapshot

The suburb is one of the oldest suburbs in Canberra, a relatively young city, settled in 1922 and gazetted as a division name in September 1928. It contained Canberra's first light-industrial area. In recent years this area has begun to be redeveloped as an entertainment and residential precinct. Other areas have been redeveloped with flats. It is now Canberra's most densely populated suburb.

Disclaimer:

Please note that while all care has been taken regarding general information and marketing information compiled for this rental advertisement, LJ HOOKER CANBERRA CITY does not accept responsibility and disclaim all liabilities in regard to any errors or inaccuracies contained herein. We encourage prospective tenants to rely on their own investigation and in-person inspections to ensure this property meets their individual needs and circumstances.

PETS:

Please be aware that at all stages of tenancy this property requires consent to be sought from the lessor for the keeping of any pets at the premises. Consent must be provided before any pets are at the premises.

RENTING BOOK:

https://www.justice.act.gov.au/_data/assets/pdf_file/0008/2443472/Renting-Book-May-2024.pdf



LJ Hooker Canberra City
(02) 6249 7700

Disclaimer: All information contained therein is gathered from relevant third parties sources. We cannot guarantee or give any warranty about the information provided. Interested parties must rely solely on their own enquiries.

More About this Property

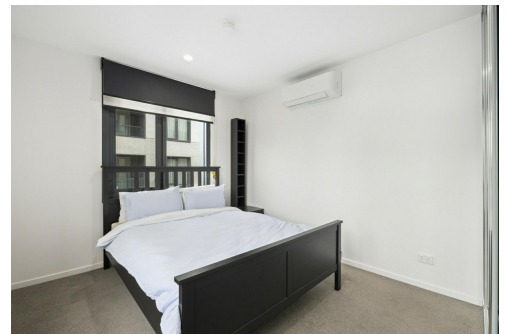
Property ID	2C8HFHK
Property Type	Apartment
Including	Air Conditioning Balcony

Grace Bowman 0472 759 453

Property Investment Manager - NSW & ACT Licensed Agent |
grace.bowman@ljhcanberracity.com.au

LJ Hooker Canberra City (02) 6249 7700

1st Floor, 182 - 200 City Walk, CANBERRA CITY ACT 2601
canberracity.ljhooker.com.au | canberracity@ljhooker.com.au



Disclaimer: All information contained therein is gathered from relevant third parties sources.
We cannot guarantee or give any warranty about the information provided. Interested parties must rely solely on their own enquiries.

**LJ Hooker Canberra City
(02) 6249 7700**