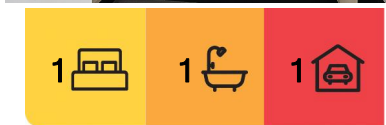




Virtually Furnished



Virtually Furnished



Bondi Beach, 6/66 Beach Road

****DEPOSIT TAKEN ** INSPECTIONS CANCELLED****

Modern Beach Pad in the Heart of Bondi's Village Precinct

Designed to embrace Bondi's desirable beach lifestyle, this generous apartment offers a peaceful retreat in a coveted village address. With an oversized covered balcony is northeast facing which boasts abundant natural light throughout, modern finishes and a double bedroom.

It's just a stroll from fabulous cafes, wine bars, restaurants, organic bakery, yoga schools and the stunning beachfront.

Property Features:

- Double bedroom, with Built-in robe
- Open plan granite kitchen, s/steel appliances
- Spacious living & dining flows out to balcony
- Quiet middle floor position in sought-after block



Disclaimer: All information contained therein is gathered from relevant third parties sources.

We cannot guarantee or give any warranty about the information provided. Interested parties must rely solely on their own enquiries.

For Lease
Please Call

View
ljhooker.com.au/27JHY

Contact
Paloma Soulos
0466 975 880
paloma.soulos@ljdoublebay.com

LJ Hooker Double Bay
(02) 9185 2816

- Security underground parking

More About this Property

Property ID 27JHYY

Property Type Apartment

Paloma Soulos 0466 975 880

Head of Property Management / LREA | paloma.soulos@ljhdoubebay.com

LJ Hooker Double Bay (02) 9185 2816

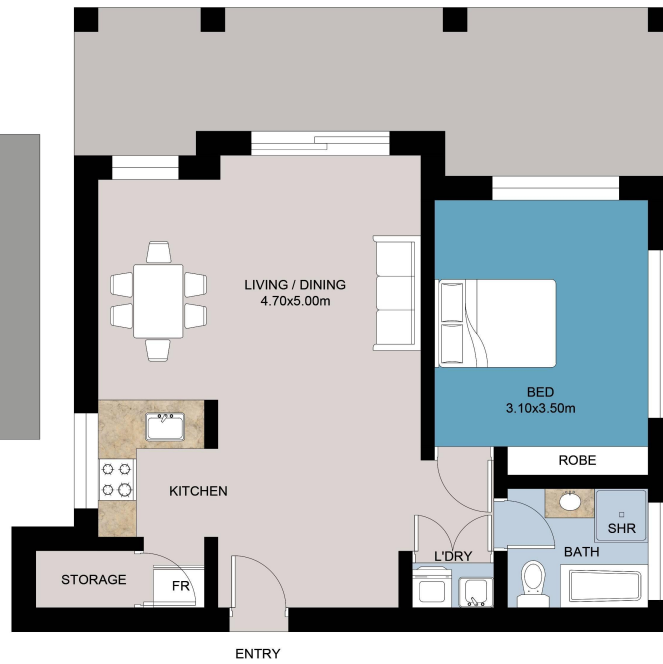
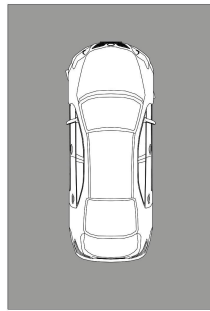
38 Ocean Street, WOOLLAHRA NSW 2025

doublebay.ljhooker.com.au | admin@ljhdoubebay.com



**LJ Hooker Double Bay
(02) 9185 2816**

Disclaimer: All information contained therein is gathered from relevant third parties sources. We cannot guarantee or give any warranty about the information provided. Interested parties must rely solely on their own enquiries.



FLOOR PLAN

This floor plan including furniture, fixture measurements and dimensions are approximate and for illustrative purposes only. BoxBrownie.com gives no guarantee, warranty or representation as to the accuracy and layout. All enquiries must be directed to the agent, vendor or party representing this floor plan.

6/66 Beach Road Bondi Beach