



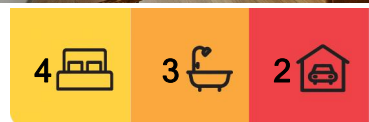
Bolwarra Heights, 30 April Circuit

"Ultra-Modern and Sleek"

Positioned on the high side of the street sits this stunning ultra-modern and sleek family home. The property has been designed to a high standard with space, storage and entertaining in mind. There are multiple living areas to accommodate the entire family.

Upstairs there are three well-appointed bedrooms, all with built-in robes and ceiling fans whilst the main has its very own modern private ensuite and large sliding doors leading out to the front balcony. The main modern bathroom is centrally located between the bedrooms offering separate shower, deep oval shape bath for those relaxing nights at home, floating vanity and toilet.

In the heart of the home you have a good size separate lounge with a large sliding door opening up to the front balcony where you can relax and enjoy your free time to unwind and take in the rural views around you. The dining area is of a good size to entertain your family and friends with a sliding door leading out to your undercover alfresco area.



For Lease
\$720 pw

View
By Appointment

Contact
Kevin Yarrington
0432 633 257
kyarrington.maitland@ljhooker.com.au



LJ Hooker Maitland
(02) 4933 5511

Disclaimer: All information contained therein is gathered from relevant third parties sources. We cannot guarantee or give any warranty about the information provided. Interested parties must rely solely on their own enquiries.

Connecting your living and dining area is a large ultra modern galley style kitchen which the MasterChef of the home will enjoy and cook up a storm. Boasting stone benchtops, 900mm 5x burner gas cooking, 900mm electric oven, dishwasher, glass splashback, loads of cupboard and bench space for storage.

Downstairs you have a wide hallway leading you around to a well-appointed media room for those cosy nights at home to watch your favourite family movie or possible 4th bedroom which is accommodated by a modern powder room with shower and toilet.

Other great features include ducted air-conditioning throughout, loads of storage with both linen cupboards upstairs and downstairs, under stairs storage and plenty of cupboard space in the laundry. There also is a double garage with auto door and internal access.

Outside you have a low maintenance fully fenced yard and garden shed.

Be quick as this property will not last long!!

* Photos not to be relied upon

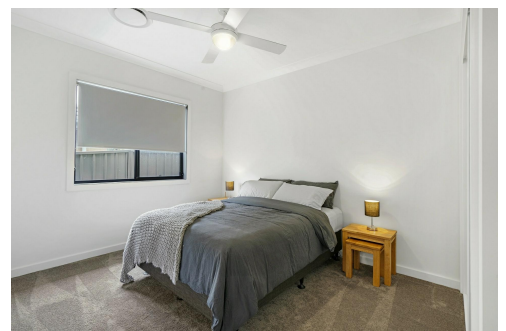
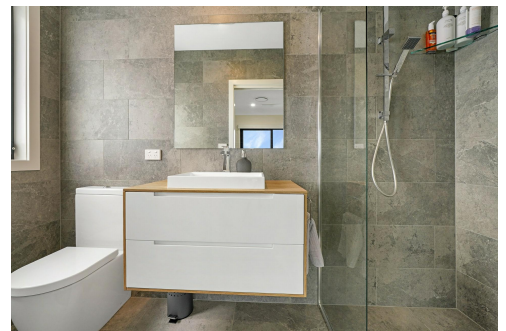
Disclaimer: The photos indicating the condition of the advertised property may or may not be an exact reflection of the current condition of the property. If you have any concerns please contact the office to confirm this prior to any inspection.

More About this Property

Property ID	1E9FF6H
Property Type	House

Kevin Yarrington 0432 633 257
Property Investment Manager | kyarrington@maitland@ljhooker.com.au

LJ Hooker Maitland (02) 4933 5511
24 Ken Tubman Drive, MAITLAND NSW 2320
maitland.ljhooker.com.au | maitland@ljhooker.com.au



Disclaimer: All information contained therein is gathered from relevant third parties sources. We cannot guarantee or give any warranty about the information provided. Interested parties must rely solely on their own enquiries.

LJ Hooker Maitland
(02) 4933 5511