






## Blakeview, 139 Bentley Road

Spacious 4 Bedroom Home

4  2  0 

OPEN INSPECTION TIME: Click REQUEST INSPECTION button on website listing

Rent: \$620.00 Per week

Bond: \$2,480

Available Date: 15/11/2024

Owners Intent to Sell: No intent advised

12 Month Lease

Intentions to sell: Non advised

Pets Negotiable

Smoking outside only

Apply online at: [www.2apply.com](http://www.2apply.com)

You are welcome to complete an application form online prior to viewing.

**For Lease**

Please Call

**View**

[ljhooker.com.au/66DCFDC](http://ljhooker.com.au/66DCFDC)

**Contact**

**Wendy Page**

[wendy.page@ljhces.com.au](mailto:wendy.page@ljhces.com.au)



**Disclaimer:** All information contained therein is gathered from relevant third parties sources.

We cannot guarantee or give any warranty about the information provided. Interested parties must rely solely on their own enquiries.

**LJ Hooker Craigmore | Elizabeth |  
Salisbury  
(08) 8255 9555**

Once you have signed up for an inspection time on the website listing, we will contact you via text message with a viewing time.

Do not call for a viewing time; one will be allocated to you once you have signed up via the website.

There will be no exceptions to this process.

Unique property, Situated on a 5251m2 Block, yet still close to everything Munno Para, Blakeview, Craigmore and Blakes Crossing have to offer.

- 4 bedroom brick home
- 2 large living areas
- Kitchen and dining
- 2 Bathrooms, 1 with bath toilet and vanity and 1 with shower toilet and vanity
- 2 large sheds
- Swimming pool and pool shed
- Electric cooking
- 2 Split system RC air conditioning and combustion heater for year-round climate control
- Generous size grassed yards with gardens and fruit trees
- Ideal location close to all the Schools and shops Blakeview has to offer while still having the feel of being in the country

LJ Hooker Craigmore | Elizabeth | Salisbury: the number one Real Estate Agents / Sale Agents and Property Management in the Northern Suburbs of South Australia.

Specialists in: Andrews Farm, Angle Vale, Blakeview, Burton, Craigmore, Davoren Park, Elizabeth and surrounding, Gawler, Hillbank, Munno Para, One Tree Hill, Parafield, Para Hills, Paralowie, Salisbury, Smithfield.

Disclaimer:

We have in preparing this document used our best endeavours to ensure the information contained is true and accurate, but accept no responsibility and disclaim all liability in respect to any errors, omissions, inaccuracies or misstatements contained. Prospective tenants should make their own enquiries to verify the information contained in this document.

RLA155355



**Disclaimer:** All information contained therein is gathered from relevant third parties sources. We cannot guarantee or give any warranty about the information provided. Interested parties must rely solely on their own enquiries.

**LJ Hooker Craigmore | Elizabeth |  
Salisbury  
(08) 8255 9555**

## More About this Property

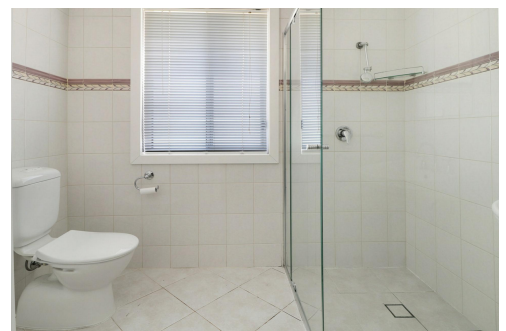
<b>Property ID</b>	66DCFDC
<b>Property Type</b>	House
<b>Land Area</b>	5251 sqm

### Wendy Page

Property Investment Department Manager | [wendy.page@ljhces.com.au](mailto:wendy.page@ljhces.com.au)

### LJ Hooker Craigmore | Elizabeth | Salisbury (08) 8255 9555

Shop 17, Craigmore Village, Yorktown Road, CRAIGMORE SA 5114  
[craigmoreelizabeth.ljhooker.com.au](mailto:craigmoreelizabeth.ljhooker.com.au) | [Office@ljhces.com.au](mailto:Office@ljhces.com.au)



**Disclaimer:** All information contained therein is gathered from relevant third parties sources.  
We cannot guarantee or give any warranty about the information provided. Interested parties must rely solely on their own enquiries.

**LJ Hooker Craigmore | Elizabeth |  
Salisbury  
(08) 8255 9555**