

Belmont, Unit 3/182 Epsom Avenue

HAPPY LIVING STARTS HERE



Conveniently located just around the corner from the Belvidere street shopping strip complete with IGA, Chicken Treat and a variety of different shops, for food and style is this tidy spacious unit.

For Lease
Please Call

View
ljhooker.com.au/5F9AFFB

Complete with Double automatic doored garage, built in robes, Ducted evaporative air conditioning, spacious kitchen adjoining the open plan living space, good sized bedrooms plus a spacious rear out door area. Public transport is almost at your front door, For the FIFO workers the airport is minutes away. Belmont forum is just minutes away, along with the abundance of shops and services that Belmont has to offer.

The Swan river parklands are about a kilometre away for getting out and exploring our City. Getting anywhere from here I believe makes this the ideal area to live in.

Key Features



**LJ Hooker Victoria Park | Belmont
(WA)
(08) 9473 7777**

Disclaimer: All information contained therein is gathered from relevant third parties sources. We cannot guarantee or give any warranty about the information provided. Interested parties must rely solely on their own enquiries.

- * Great central location
- * Multiple transport options
- * Ducted Air Conditioning
- * Built in robes
- * Double Garage with automatic door
- Unfurnished
- 6 or 12 month initial lease

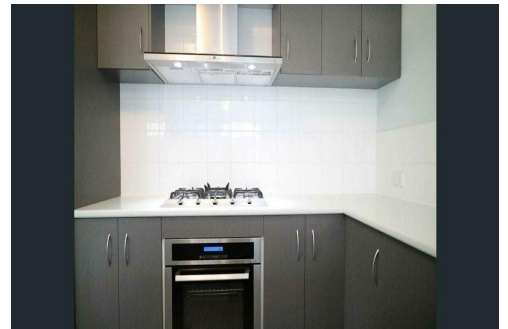
Please register your details by requesting/booking an inspection

*** ARE YOU A LANDLORD? If you are looking for property management services, we would love to hear from you. Contact our Business Development Manager Barry on 0407 722 867 or barry@ljhvicpark.com.au for a no-obligation and confidential conversation.

More About this Property

Property ID	5F9AFFB
Property Type	Unit
Including	Ensuite Air Conditioning Floorboards Built-in-Robes Secure Parking Carpeted Close to Schools Close to Transport

LJ Hooker Victoria Park | Belmont (WA) (08) 9473 7777
 288 Albany Highway, VICTORIA PARK WA 6100
victoriapark-belmontwa.ljhooker.com.au | reception@ljhvicpark.com.au



Disclaimer: All information contained therein is gathered from relevant third parties sources. We cannot guarantee or give any warranty about the information provided. Interested parties must rely solely on their own enquiries.

LJ Hooker Victoria Park | Belmont (WA) (08) 9473 7777