

Belgian Gardens, 44 Price Street

Charming Home in Sought-After Belgian Gardens

44 Price Street, Belgian Gardens
\$500 per week | 3 Bedrooms | 1 Bathroom | Available from 11/07/2025

Located in the ever-popular suburb of Belgian Gardens, this well-presented 3-bedroom home offers comfort, space, and convenience in a prime coastal location.

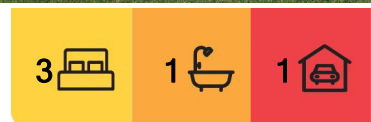
This charming property features three generously sized bedrooms, a functional bathroom, and a light-filled living area that flows seamlessly to the kitchen and dining space. With timber floors, high ceilings, and plenty of natural light, the home has a warm and welcoming feel throughout.

Property Features:

3 spacious bedrooms



Disclaimer: All information contained therein is gathered from relevant third parties sources. We cannot guarantee or give any warranty about the information provided. Interested parties must rely solely on their own enquiries.



For Lease
\$500 per week

View
By Appointment

LJ Hooker Townsville
07 44262125

1 neat and tidy bathroom

Open-plan living and dining area

Air conditioning and ceiling fans

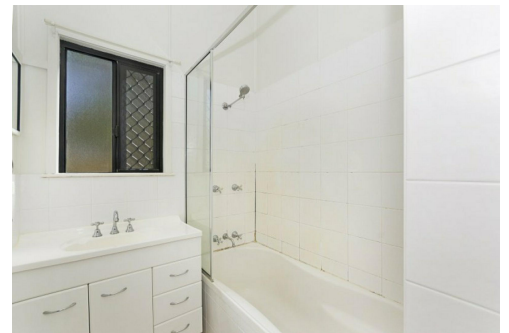
Fully fenced yard - perfect for kids or pets

Why Belgian Gardens?

Enjoy being just minutes from The Strand, Castle Hill walking tracks, quality schools, parks, and local cafes. Belgian Gardens is a tightly held suburb known for its leafy streets, proximity to the beach, and strong community feel - perfect for families and professionals alike.

Currently tenanted. Available from 11th July 2025.

Register your interest today to be notified of upcoming inspections.



More About this Property

Property ID	3XGHWK
Property Type	House
Land Area	857 sqm
Including	Air Conditioning Balcony Floorboards Built-in-Robes Secure Parking

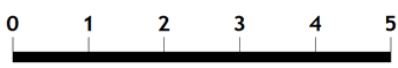
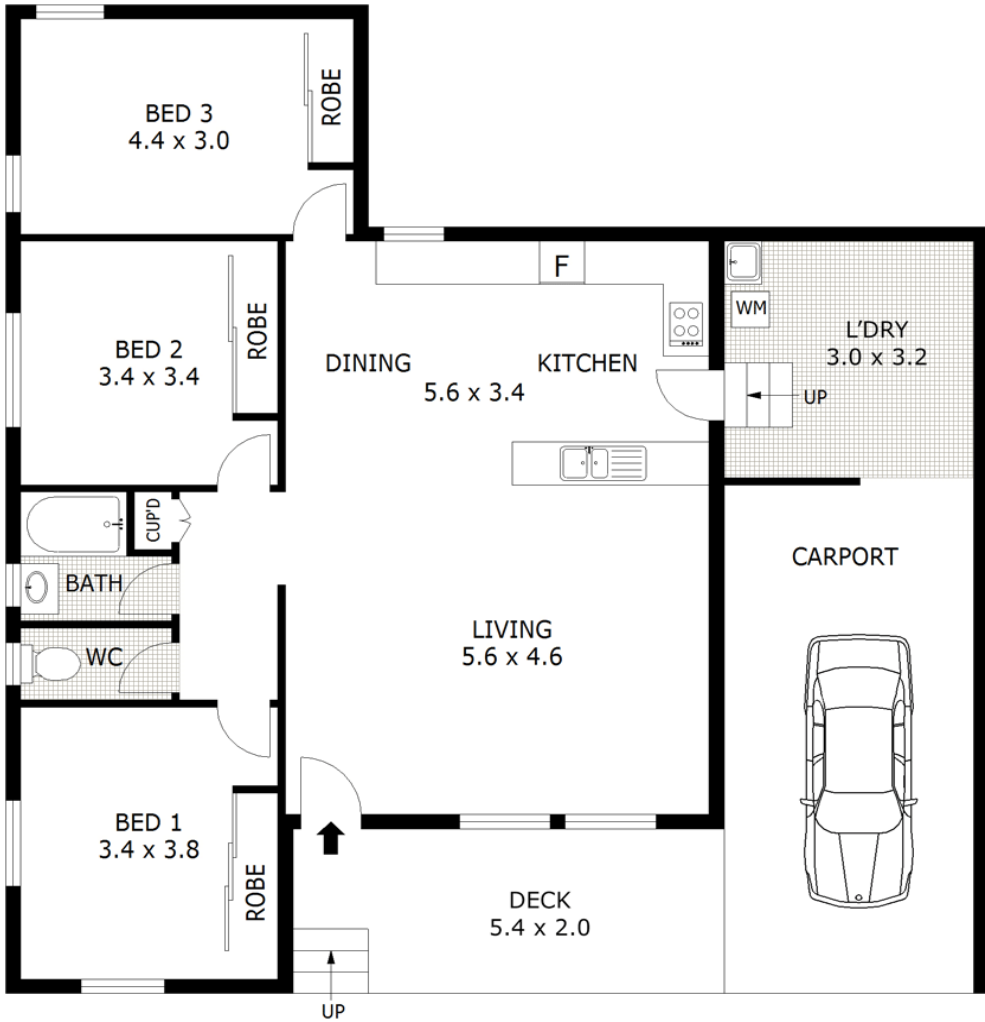
LJ Hooker Townsville 07 44262125
Shop 18/39 Eyre Street, NORTH WARD QLD 4810
townsville.ljhooker.com.au | townsville@ljhooker.com.au



LJ Hooker Townsville
07 44262125

Disclaimer: All information contained therein is gathered from relevant third parties sources. We cannot guarantee or give any warranty about the information provided. Interested parties must rely solely on their own enquiries.

SHED
1.2 x 1.5



Scale in metres. Indicative only. Dimensions are approximate. All information contained herein is gathered from sources we believe to be reliable. However we cannot guarantee its accuracy and interested parties should rely on their own enquiries.

Total	- 142 m ²
Residence	- 94 m ²
Carport	- 23 m ²
Deck	- 12 m ²
Laundry	- 11 m ²
Shed	- 2 m ²

44 Price Street, Belgian Gardens



LJ Hooker Townsville
07 44262125

Disclaimer: All information contained therein is gathered from relevant third parties sources. We cannot guarantee or give any warranty about the information provided. Interested parties must rely solely on their own enquiries.