

## Belconnen, 2310/120 Eastern Valley Way

Sleek & Modern 2-Bedroom Apartment in the Heart of Belconnen

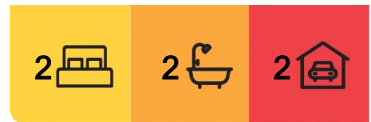
Experience stylish urban living in this beautifully appointed 2-bedroom, 2-bathroom apartment located in the vibrant heart of Belconnen. Positioned on a high floor, this sunlit apartment offers comfort, quality, and unbeatable convenience.

### Property Features:

- \* 2 spacious bedrooms with built-in wardrobes
- \* 2 modern bathrooms with quality finishes
- \* Bright open-plan living with a private, sun-drenched balcony
- \* Contemporary kitchen with modern appliances, built-in microwave & dishwasher
- \* European laundry for added convenience
- \* Ceiling fans
- \* 2 secure car spaces - rare in apartment living
- \* Access to a resort-style common area with a pool and separate entertaining space -



**Disclaimer:** All information contained therein is gathered from relevant third parties sources. We cannot guarantee or give any warranty about the information provided. Interested parties must rely solely on their own enquiries.



**For Lease**  
Please Call

**View**  
[ljhooker.com.au/HP07SF8H](http://ljhooker.com.au/HP07SF8H)

**Contact**  
**Leasing Team**  
0418 631 503  
[leasingconsultant@ljhbelconnen.com.au](mailto:leasingconsultant@ljhbelconnen.com.au)

**EER** ★★★★★

**LJ Hooker Belconnen**  
**(02) 6251 1477**

perfect for relaxing or hosting friends

Located right in the centre of Belconnen, you'll be steps away from Westfield, restaurants, cafes, public transport, and the scenic Lake Ginninderra.

12 Month Lease

The property has a valid exemption and is not required to comply with the minimum ceiling insulation standard.

EER Unknown

#### TO INSPECT THIS PROPERTY

- 1.You can Register to join an existing inspection or Register to be notified when inspection times are available.
- 2.Click on the BOOK INSPECTION button and choose your inspection time.
- 3.If this listing does not have the BOOK INSPECTION button, please go to [Belconnen.ljhooker.com.au](http://Belconnen.ljhooker.com.au) to Register.
- 4.If you do not Register, we cannot notify you of any time changes, cancellations, or future inspection times.

**PETS:** Please be aware that at all stages of your tenancy this property requires consent to be sought from the property owner for the keeping of any pets at the property. Consent must be provided before any pets are on the property.

#### Disclaimer

Information contained herein is gathered from external sources we consider to be reliable. Whilst all care has been taken regarding all information compiled for this rental advertisement LJ Hooker Belconnen does not give any guarantee or warranty about the information provided and does not accept responsibility and disclaims all liabilities as to any errors or inaccuracies contained herein. We advise prospective tenants to rely on their own investigations and in-person inspections to ensure this property meets their individual needs and circumstances.

## More About this Property

<b>Property ID</b>	HP07SF8H
<b>Property Type</b>	Apartment
<b>Including</b>	Air Conditioning Intercom Balcony Dishwasher Built-in-Robes Secure Parking

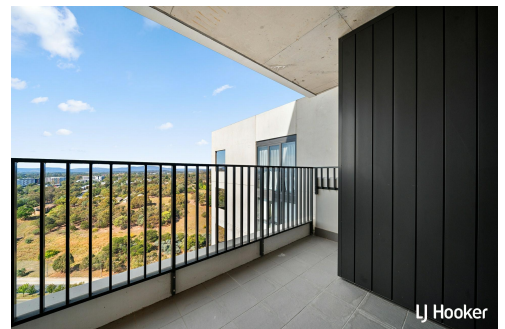
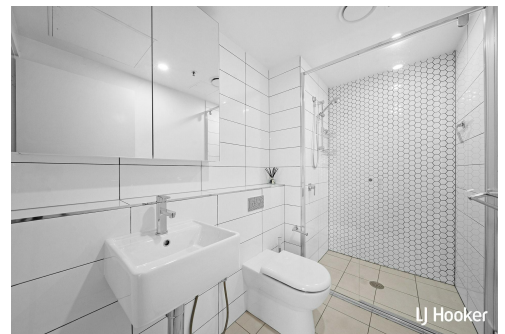
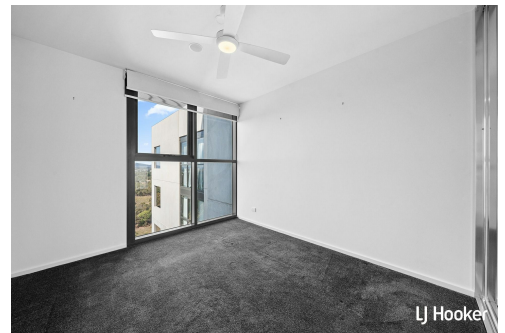
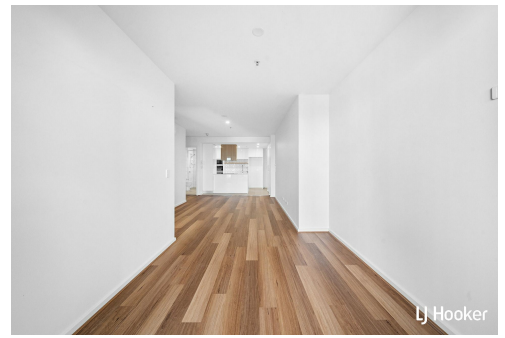
#### Leasing Team 0418 631 503

Property Investment Manager | [leasingconsultant@ljhbelconnen.com.au](mailto:leasingconsultant@ljhbelconnen.com.au)

#### LJ Hooker Belconnen (02) 6251 1477

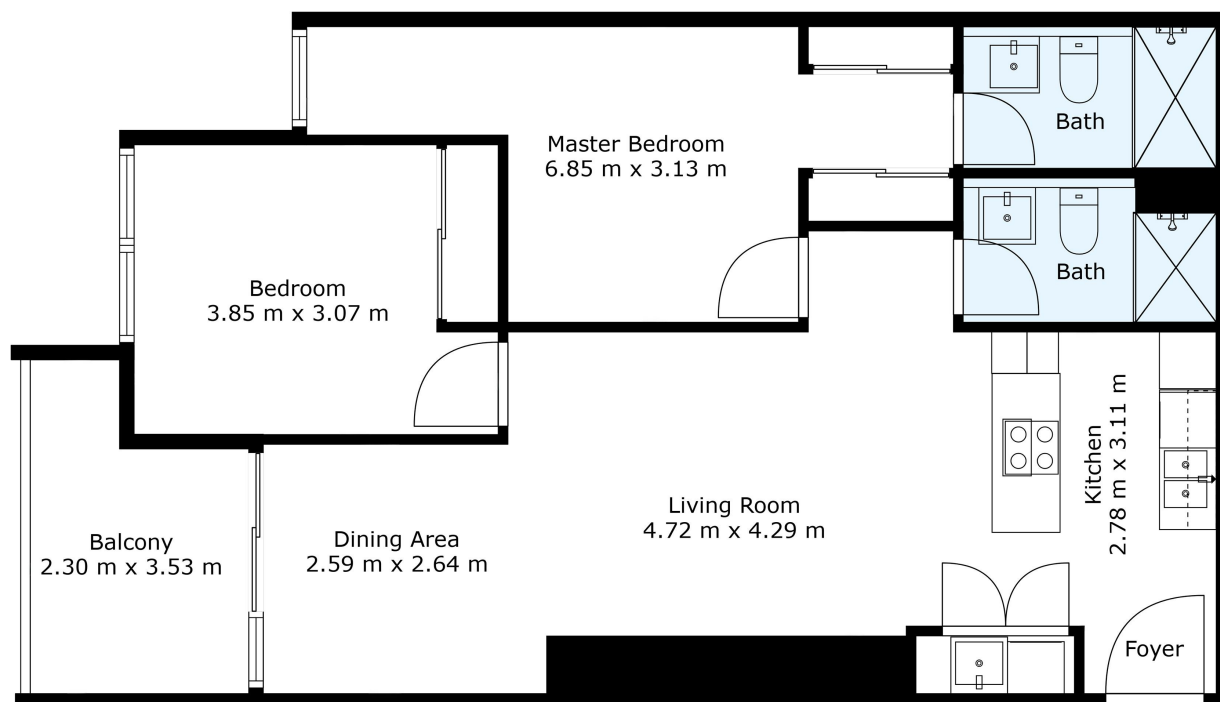
Shop 9, 21 Benjamin Way, BELCONNEN ACT 2617

[belconnen.ljhooker.com.au](http://belconnen.ljhooker.com.au) | [belconnen@ljhbelconnen.com.au](mailto:belconnen@ljhbelconnen.com.au)



**Disclaimer:** All information contained therein is gathered from relevant third parties sources. We cannot guarantee or give any warranty about the information provided. Interested parties must rely solely on their own enquiries.

**LJ Hooker Belconnen**  
**(02) 6251 1477**


**2310/120 Eastern Valley Way, Belconnen**


*Disclaimer: Plans are indicative only and should be checked by the prospective purchaser. Plans shown are for presentation purposes and are not part of any legal document. All measurements and figures are approximate. The information herein is gathered from sources we believe to be reliable.*