

Bees Creek, 15 Belgrave Road

Easy Living Rural Block in Bees Creek

Available for lease is this 2 Bedroom 2.5 Bathroom on a 5 Acre Rural Block in Bees Creek. The property still has many original features with an open-plan living design. Situated on ground level, with verandas at the front and back of the property.

The property has a coded 9m x 6m powered open shed with an attached closed 6m x 4m workshop, perfect for a tradesperson.

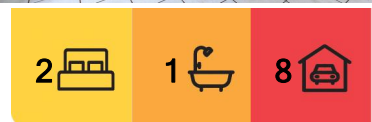
The 5-acre block is fully fenced, 80% dry, with 5 acres of bush, gardens, and lawn, The property also offers reliable town water located around 5 minutes from Coolalinga shopping centre.

Property Features:

- *2 Bedroom
- *1.5 Bathroom
- *External Laundry



Disclaimer: All information contained therein is gathered from relevant third parties sources. We cannot guarantee or give any warranty about the information provided. Interested parties must rely solely on their own enquiries.



For Lease
Please Call

View
ljhooker.com.au/5CKUF2X

Contact
Kylie Bonanni
kbonanni@ljhookerdarwin.com.au
Chantelle Dalton
cdalton@ljhookerdarwin.com.au

LJ Hooker Darwin
(08) 8924 0900

*Open 9M x 6M Powered Shed

*6x4M Powered Workshop

*Chicken Coop

*5 Acre Rural Block

*Town Water

More About this Property

| | |
|----------------------|---|
| Property ID | 5CKUF2X |
| Property Type | House |
| Land Area | 5 acre |
| Including | Air Conditioning Toilets (1) Workshop Built-in-Robes Fully Fenced |

Kylie Bonanni

Business Development Manager | kbonanni@ljhookerdarwin.com.au

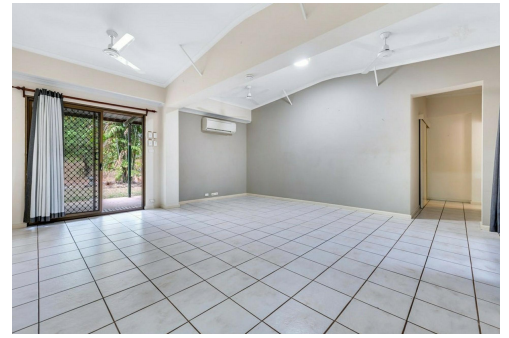
Chantelle Dalton

Property Investment Manager | cdalton@ljhookerdarwin.com.au

LJ Hooker Darwin (08) 8924 0900

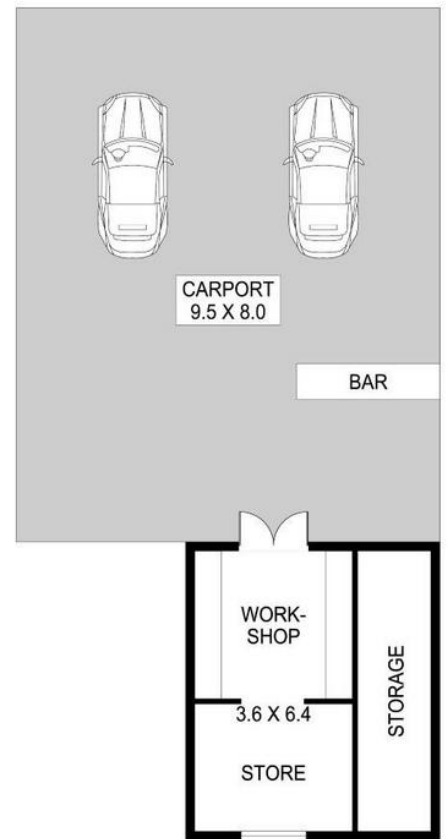
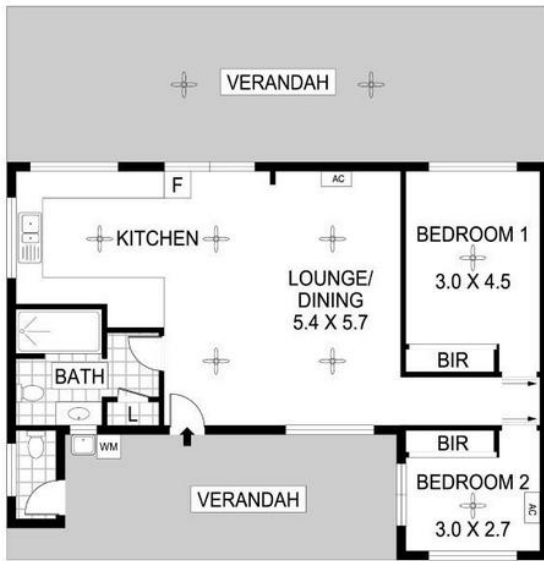
Shop 1/25 Parap Road, PARAP NT 0820

darwin.ljhooker.com.au | reception@ljhookerdarwin.com.au



LJ Hooker Darwin
(08) 8924 0900

Disclaimer: All information contained therein is gathered from relevant third parties sources. We cannot guarantee or give any warranty about the information provided. Interested parties must rely solely on their own enquiries.



Scale in metres. Indicative only. Dimensions are approximate. All information contained herein is gathered from sources we believe to be reliable. However we cannot guarantee its accuracy and interested persons should rely on their own enquiries

15 Belgrave Road, Bees Creek