



Bayswater, 54 Slade Street

Character 2x1 In Bayswater

2  1  0 

For Lease
Please Call

View
ljhooker.com.au/3R3BFGJ

Contact
Olivia Dangerfield
olivia.dangerfield@ljhooker.com.au

This 2 bedroom, 1 bathroom weatherboard character home offers a large block and ideal location. Close to Bayswater train station, bus routes, shops, schools, Bayswater library and the Swan River, as well as offering easy access to Tonkin Highway and Guildford Road for trips further afield.

Catch a bus or train to the city, stroll along riverside walkways or relax at vibrant café strips, all are within easy grasp.

Features:- 2 Bedrooms- 1 Bathroom- Newly Painted- Timber Flooring- Large Backyard- Garden Shed

To find out more information regarding this property please email or register to attend one of viewings.



Disclaimer: All information contained therein is gathered from relevant third parties sources. We cannot guarantee or give any warranty about the information provided. Interested parties must rely solely on their own enquiries.

LJ Hooker City Residential
(08) 9325 0700

More About this Property

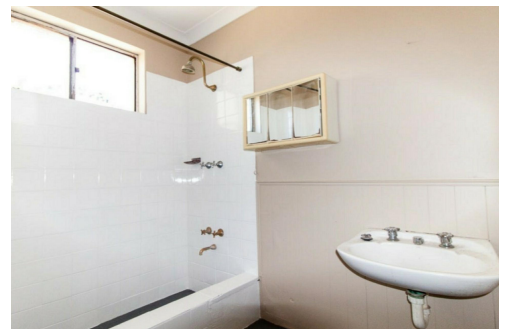
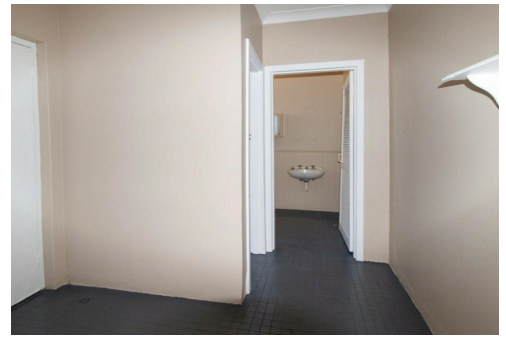
Property ID	3R3BFGJ
Property Type	House
Including	Toilets (1)

Olivia Dangerfield

Leasing Manager | olivia.dangerfield@ljhooker.com.au

LJ Hooker City Residential (08) 9325 0700

Shop 30, 82 Royal Street, EAST PERTH WA 6004
cityresperth.ljhooker.com.au | cityresperth@ljhooker.com.au



Disclaimer: All information contained therein is gathered from relevant third parties sources.
We cannot guarantee or give any warranty about the information provided. Interested parties must rely solely on their own enquiries.

LJ Hooker City Residential
(08) 9325 0700